



# MUSTEE

## 26F and 26W UTILATWIN® Laundry/Utility Tubs — Premier



### Design features:

- High strength, one piece molded construction
- Produced with Mustee's proprietary DURASTONE® — fiberglass with special resins for extra strength and durability
- Includes Twin-Drain Waste connector which joins drain assemblies includes washers, slip nuts and stoppers
- Divider wall between tubs is recessed one inch, permitting water to overflow from one tub to other, prevents water spilling onto floor
- Large, self-draining back shelf
- 19 Gallon capacity per tub, extra deep 13" tubs with smooth surfaces
- Connects to standard 1-1/2" P or S trap
- Accommodates single or dual-handle faucets. 4" or 8" centers
- Floor model includes heavy gauge steel legs with adjustable levelers
- Wall model includes wall mounting bracket, side supports and mounting hardware for securing tub to concrete or stud wall
- Mold and mildew-resistant components

### Code Accepted

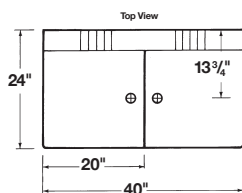
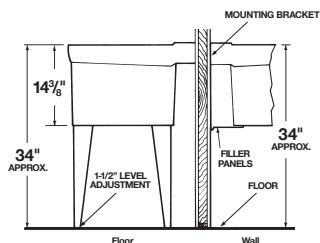
UTILATUB® and UTILATWIN® Laundry/Utility Tubs meet or exceed performance requirements as listed:

- International Association of Plumbing and Mechanical Officials (IAPMO)® Listed
- Warnock Hersey® (Canada) Listed—CSA test standards: Laundry Tray - #B45.0 and #B45.5; Drain - #B125
- American National Standards Institute (ANSI)—Specification Z 124-2017



### Specifications

Colors & Models:	Model	Mounting	H x W x D	UPC
White	26F	Floor	34" x 40" x 24"	6 71031 00054 5
White	26W	Wall	34" x 40" x 24"	6 71031 00055 2



**General:** Furnish and install as shown on plans, UTILATWIN® Twin Laundry/Utility Tub model \_\_\_\_ (26F, 26W), as manufactured by E.L. Mustee & Sons, Inc. Tub shall be one-piece molded construction using DURASTONE®, a blend of natural crushed stone and polyester resins molded with matched metal molds under extreme heat and pressure. Tub to include integrally molded drains, twin drain waste coupling, recessed divider wall between tubs and twin drain assembly for connection to standard 1-1/2" P or S-trap, stoppers and wall mounting hardware or heavy gauge steel legs with built-in levelers. 19 gallon capacity per tub, each tub 13" deep. Shall meet ANSI Z 124-2017. Color: White. Weight: 26F 48 lbs.; 26W 48 lbs.



# MUSTEE

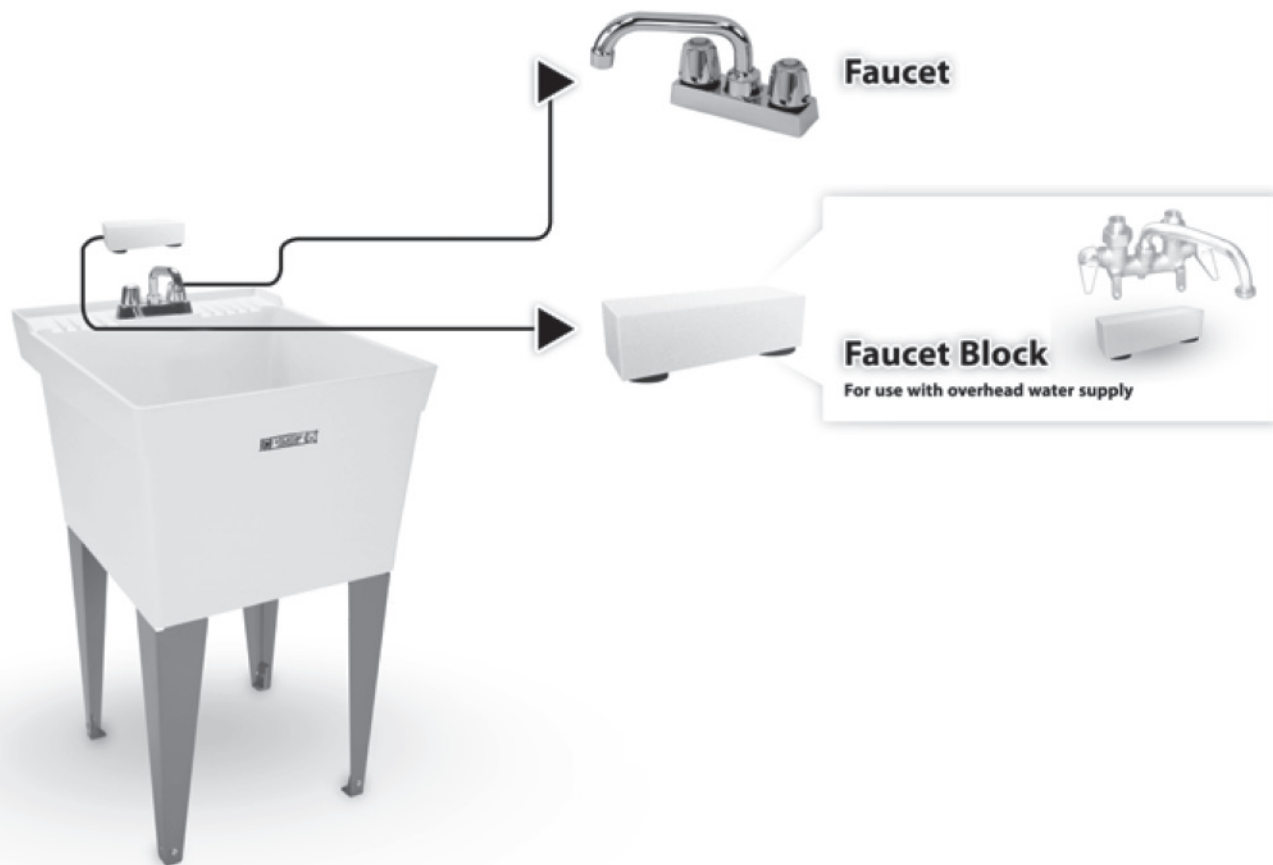
E.L. Mustee & Sons, Inc. • 5431 West 164th Street • Brook Park, OH 44142 • Phone: 216.267.3100 • Fax: 216.267.9997  
E-mail: [info@mustee.com](mailto:info@mustee.com) • Web: [www.mustee.com](http://www.mustee.com) • Proudly made in the USA

Notice: Our continuous commitment to product improvement may result in changes to product specifications without notice.  
Patents pending. Made and Printed in U.S.A.



# MUSTEE

## 26F and 26W UTILATWIN® Laundry/Utility Tub Accessories



### Faucet

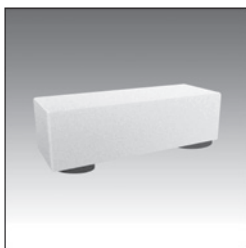


Model No.	UPC
-----------	-----

93.600	6 71031 00232 7
--------	-----------------

Chrome finish, 4" center set brass faucet. 7" swing spout with aerator, level handles, replaceable seats and stems. Aerator or hose end.

### Faucet Block



Model No.	UPC
-----------	-----

20.600	6 71031 00031 6
--------	-----------------

Used when water supply lines are above the tub. Mounts to tub shelf when using a clamp-on faucet.



# MUSTEE

E.L. Mustee & Sons, Inc. • 5431 West 164th Street • Brook Park, OH 44142 • Phone: 216.267.3100 • Fax: 216.267.9997  
E-mail: [info@mustee.com](mailto:info@mustee.com) • Web: [www.mustee.com](http://www.mustee.com) • Proudly made in the USA

Notice: Our continuous commitment to product improvement may result in changes to product specifications without notice.  
Patents pending. Made and Printed in U.S.A.