



MUSTEE

T6030R TOPAZ™ Fiberglass Bathtubs — Premier Right Hand Drain



Design features:

- Precision molded using Mustee's premium VARISTONE® fiberglass
- Fits standard 30" x 60" alcove
- Apron supported by twin molded brackets for extra stability
- A network of bottom and side structural support
- One-piece molded, with matched metal molds for high strength and integral rigidity
- 40° lumbar slope for relaxed reclining while soaking
- 8-1/2" x 14-1/4" drain offset
- Easy to clean, colorfast white semi-gloss finish

Code Accepted:

TOPAZ™ Fiberglass Bathtubs meet or exceed performance requirements as listed:

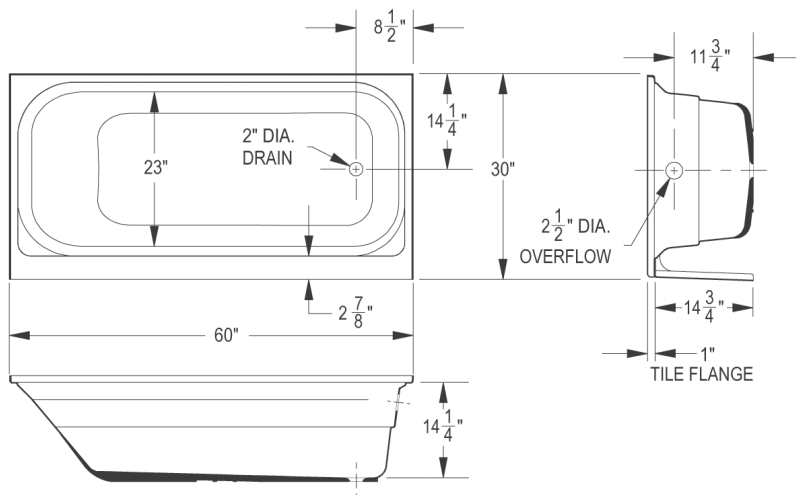
- International Association of Plumbing and Mechanical Officials (IAPMO)® Listed
- American National Standards Institute (ANSI) - Specification ANSI Z 124-2017
- ADA



Specifications

Model No.	Color	H x W x L	Drain Position	UPC
T6030R	White	15-3/4" x 30" x 60"	RH	6 71031 00413 0
T6030RBN	Bone	15-3/4" x 30" x 60"	RH	6 71031 00414 7
T6030RBT	Biscuit	15-3/4" x 30" x 60"	RH	6 71031 00432 1

Inside depth: 14-1/4"



General: Furnish and install as shown on plans, TOPAZ® bathtub as manufactured by E.L. Mustee & Sons, Inc. Shall be a fiberglass 30" x 60": right hand or left hand Model _____. Construction shall be molded, reinforced fiberglass using matched metal molds under extreme heat and pressure. Shall meet ANSI Specification Z 124-2017. Color: _____ (White, Bone, Biscuit) Weight: 55 lbs. Install in compliance with local codes.

ADA compliant when installed to the specific requirements of these regulations.



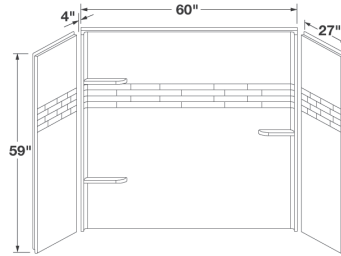
MUSTEE

E.L. Mustee & Sons, Inc. • 5431 West 164th Street • Brook Park, OH 44142 • Phone: 216.267.3100 • Fax: 216.267.9997
 E-mail: info@mustee.com • Web: www.mustee.com • Proudly made in the USA

Notice: Our continuous commitment to product improvement may result in changes to product specifications without notice. Patents pending. Made and Printed in U.S.A.



680 TOPAZ™ PREMIUM FIBERGLASS BATHTUB WALL

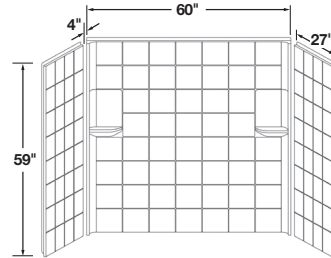


Model	Color
680WHT	White
680BN	Bone
680BT	Biscuit

Fits 30" x 60" TOPAZ™ Bathtub



670 TOPAZ™ PREMIUM FIBERGLASS BATHTUB WALL

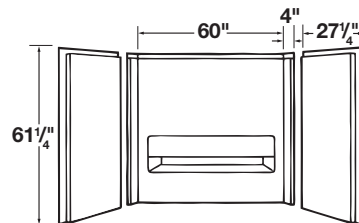


Model	Color
670WHT	White

Fits 30" x 60" TOPAZ™ Bathtub



660 TOPAZ™ PREMIUM FIBERGLASS BATHTUB WALL



Model	Color
660WHT	White

Fits 30" x 60" Bathtub

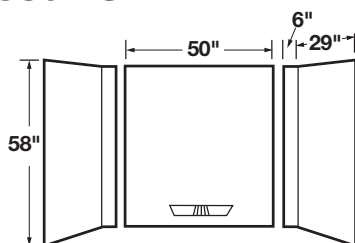


MUSTEE

Deluxe Thermoplastic Walls Adhesive Mount



350 DURAWALL®



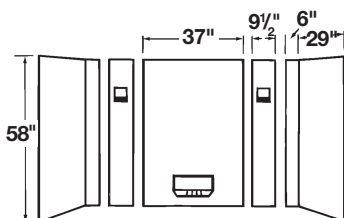
Model	Color
-------	-------

350WHT	White
350BN	Bone
350BT	Biscuit

Fits 30" x 60" Bathtub
Caulking and adhesive provided



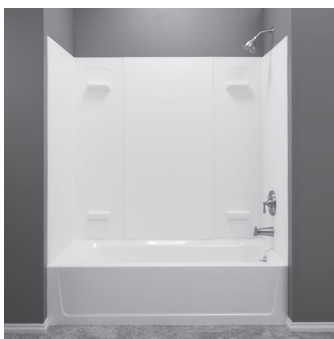
500 DURAWALL®



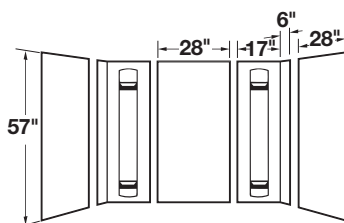
Model	Color
-------	-------

500WHT	White
--------	-------

Fits 30" x 60" Bathtub



557 DURAWALL®



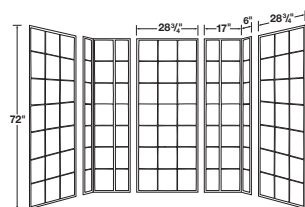
Model	Color
-------	-------

557WHT	White
--------	-------

Fits 30" x 60" and 32" x 60" Bathtubs



572T VARISTONE™

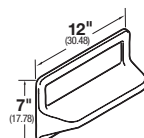
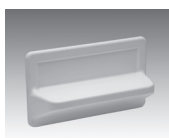


Up to 60" Wide by 34" Deep

Model	Color
-------	-------

572TWHT	White
---------	-------

572.300 VARISTONE™ — SHELVES (OPTIONAL)



Model	Color
-------	-------

572.300	White
572.300BT	Biscuit

Order desired number of shelves separately. Sturdy, adhesive mounted shelf is easy to install. Carton is 12" x 7" x 4" and weighs 2.5 lbs.



MUSTEE

E.L. Mustee & Sons, Inc. • 5431 West 164th Street • Brook Park, OH 44142 • Phone: 216.267.3100 • Fax: 216.267.9997
E-mail: info@mustee.com • Web: www.mustee.com • Proudly made in the USA

Notice: Our continuous commitment to product improvement may result in changes to product specifications without notice.
Patents pending. Made and Printed in U.S.A.

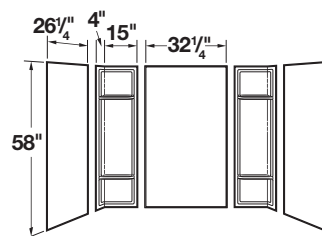


MUSTEE

Deluxe Thermoplastic Walls Adhesive Mount



53 DURAWALL®



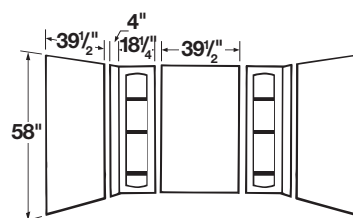
Model	Color
-------	-------

53WHT	White
-------	-------

Fit 30"x 60" Bathtub



56 DURAWALL®



Model	Color
-------	-------

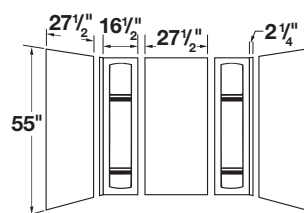
56WHT	White
-------	-------

56BN	Bone
------	------

Fit 42"x 72" Bathtub



950 DURAWALL®



Model	Color
-------	-------

950WHT	White
--------	-------

Fit 30"x 60" Bathtub

GapSeal-Pro™ — For all shower floors and bathtubs

**Model No.**

60.320A

Description

132" long x 2" tall

UPC

6 71031 00496 3

The flexible PVC GapSeal-Pro™ features a strong adhesive strip that allows it to be easily positioned to "extend" the tile flange and effectively seal the gap between drywall or like-surfaces on shower floors or bathtubs. Patent pending.



MUSTEE

E.L. Mustee & Sons, Inc. • 5431 West 164th Street • Brook Park, OH 44142 • Phone: 216.267.3100 • Fax: 216.267.9997
E-mail: info@mustee.com • Web: www.mustee.com • Proudly made in the USA

Notice: Our continuous commitment to product improvement may result in changes to product specifications without notice.
Patents pending. Made and Printed in U.S.A.