

ENHANCING STYLE AND COMFORT

# ACCESSIBLE DESIGN

DESIGN  
MEETS  
FUNCTION





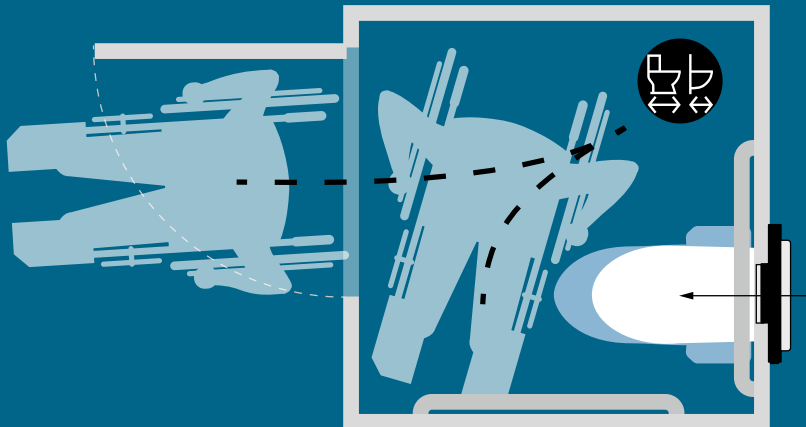
# DESIGN FOR ALL

Whether the toilet compartment is intended for ambulatory or wheelchair occupants, home or public spaces, specifying a Geberit in-wall tank and carrier system combined with a wall-hung toilet bowl is safer and more accessible. Geberit makes it easier for anyone to live a bit more independently.

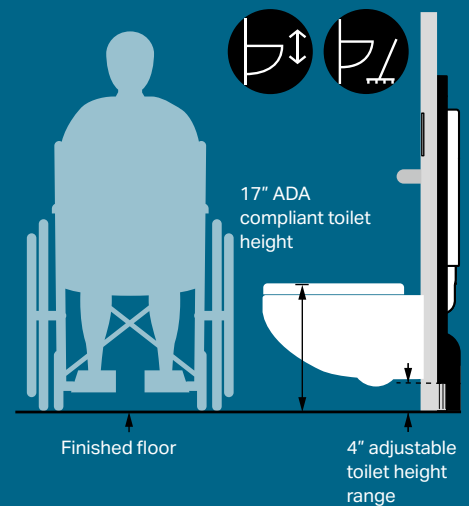
## Greater Mobility

Eliminating the tank on the toilet allows greater mobility in the compartment and reduces the potential for injury.

Illustration showing minimum floor space required for ADA compliant bathroom compartment (60"W x 59"D).



## Adjustable Height





## Wall-Hung Convenience



### CLEANING

Easy to clean the entire floor with a mop. No bending or kneeling.



### SAVES SPACE

Takes up less space than a standard toilet for greater flexibility, safety, and comfort in the smallest spaces.



### EASY TO MAINTAIN

The Geberit valve eliminates problematic chains and flappers that corrode and fail. Working parts are easily accessed through the stylish flush and cover plates.



The fill and flush valves and supply stop are located behind the wall. If maintenance is required, all working parts are easily accessed through the flush plate or cover plate.

## Carrier Frame Basics



### FLEXIBILITY IS STANDARD

The system fits in 2x4 or 2x6 walls. Adjustable height allows the Geberit system to easily accommodate the toilet seat height from 15 inches (380 mm) minimum to 19 inches (485 mm) to meet personal preference or local ADA guidelines including ANSI A117.1.



### MAXIMUM SUPPORT

The rugged steel frame of the in-wall system is capable of supporting up to 880 pounds (400 kg), exceeding ASME A112.6.2 strength requirements.



## Tank and Valves



### INSULATED TANK

The impact-resistant high-density tank is guaranteed against leaks and insulated to prevent condensation.



### WATER SAVING DUAL-FLUSH

Dual-flush volumes of 1.6/0.8 GPF (6/3 LPF) or 1.28/0.8 GPF (4.8/3 LPF) exceed high efficiency toilet standards. You can even qualify for EPA WaterSense rebates or green building points.





# ADA INSTALLATION GUIDELINES

## REMOTE CONVENIENCE

The pneumatic components of the Geberit Type 01, Type 70, and Rectangle remote actuators have been tested for years of stress and require less than five (5) pounds of force to actuate the flush. Air pressure transmits force from the flush control to the flush valve. Geberit cover plates complement the remote flush, providing easy access to working parts of the system. The remote button is a convenient, easy to use option.



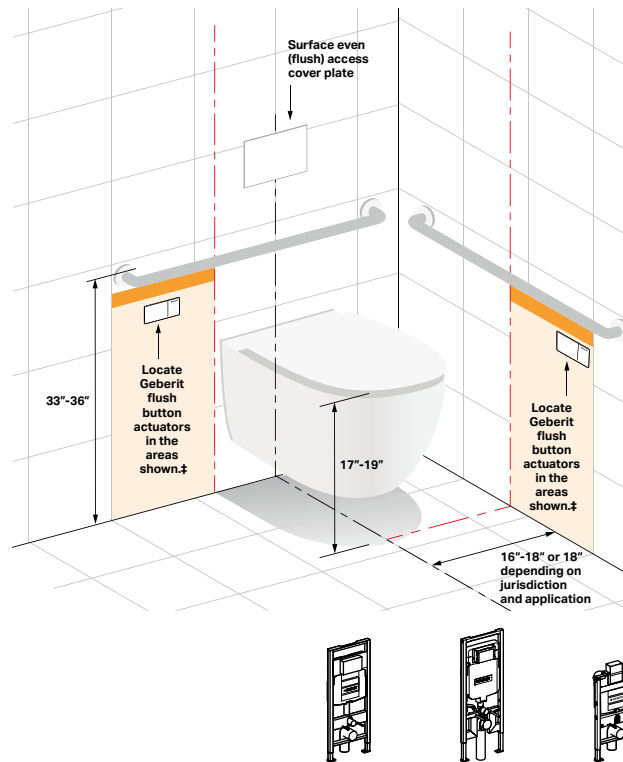
Type 01



Type 70



Rectangle



					1.6/0.8 GPF	111.335.00.5	111.798.00.1	111.012.00.1
Style	Actuation	Flush	Material	Finish	1.28/0.8 GPF	111.902.00.5	111.597.00.1	111.018.00.1
Dual-Flush Buttons for Concealed Installations								
Type 01	Manual	Dual	Plastic	Alpine White	116.044.11.1	116.045.11.1	116.044.11.1	
Type 70			Metal	Brushed SS	115.630.FW.1	115.635.FW.1	115.084.FW.1	
			Glass	White	115.630.SI.1	115.635.SI.1	115.084.SI.1	
				Black	115.630.SJ.1	115.635.SJ.1	115.084.SJ.1	
				Umber	115.630.SQ.1	115.635.SQ.1	115.084.SQ.1	
Rectangle			Plastic	Polished Chrome	115.934.21.1	—	115.934.21.1	
Surface Mounted Cover Plates for use with Flush Buttons								
—		—	Glass	White Glass	115.766.SI.1*	115.766.SI.1*	115.082.SI.1*	
			Metal	Brushed SS	115.764.FW.1*	115.764.FW.1*	—	
				Customizable	115.766.00.1*	115.766.00.1*	115.082.00.1*	
			Plastic	Alpine White	115.768.11.1*	115.768.11.1*	—	
				Polished Chrome	115.768.21.1*	115.768.21.1*		
				Matte Chrome	115.768.46.1*	115.768.46.1*		
Surface Even Cover Plates for use with Flush Buttons								
—		—	Plastic	Customizable	115.696.00.1*	115.696.00.1*	115.087.00.1*	
				Customizable with frame	115.697.00.1*	115.697.00.1*	115.088.00.1*	

\*Optional \*\*Recommended †For tile, stone or other hard surfaced walls only ‡Actuators button should be outside of the 1-1/2" restricted area below the bar.  
Note: Guidelines are not intended to replace or represent all compliance in all jurisdictions. Install according to local jurisdiction and ADA guidelines.



## SMOOTH FLUSH MOUNT

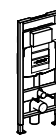
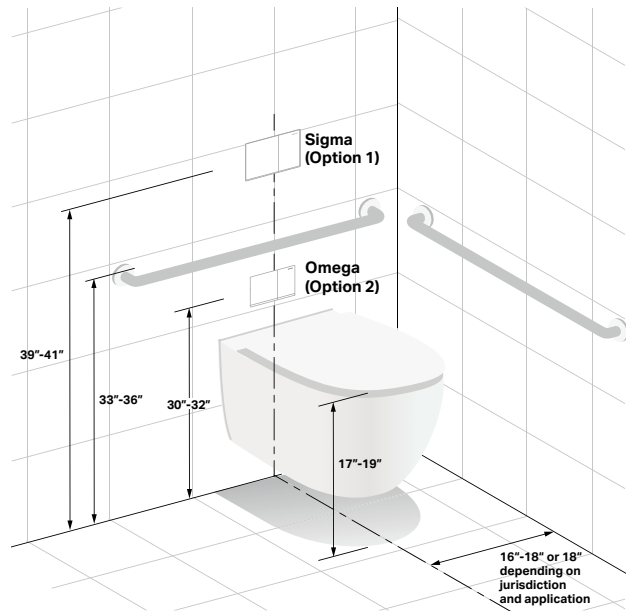
The Geberit Sigma60 and Omega 60 actuator plate mounts evenly with the wall surface for a sleek, safe minimalist appearance. Its streamlined design has no protruding edges, enhancing the feeling of spaciousness and safety in your bathroom.



Sigma60



Omega60



Style	Actuation	Flush	Material	Finish	1.6/0.8 GPF	111.335.00.5	111.798.00.1	111.012.00.1
					1.28/0.8 GPF	111.902.00.5	111.597.00.1	111.018.00.1
Dual-Flush Actuator Plates								
Sigma60†	Manual	Dual	Die Cast	Brushed Chrome		115.640.GH.1	115.640.GH.1	—
			Glass	White Glass/Aluminum		115.640.SI.1	115.640.SI.1	—
				Black Glass/Aluminum		115.640.SJ.1	115.640.SJ.1	—
				Umber Glass/Aluminum		115.640.SQ.1	115.640.SQ.1	—
				Rough-in set (REQUIRED accessory)		243.168.00.1	—	—
				Cover frame (when needed) Brushed Chrome		115.641.21.1	115.641.21.1	115.641.21.1
			Cover frame (when needed) Polished Chrome		115.641.GH.1	115.641.GH.1	115.641.GH.1	
Omega60†	Manual	Dual	Die Cast	Brushed Chrome		—	—	115.081.GH.1
			Glass	White Glass/Aluminum		—	—	115.081.SI.1
				Black Glass/Aluminum		—	—	115.081.SJ.1
				Umber Glass/Aluminum		—	—	115.081.SQ.1
			Die Cast	Cover frame (when needed) Brushed Chrome		—	—	115.086.GH.1
				Cover frame (when needed) Polished Chrome		—	—	115.086.21.1

\*Optional \*\*Recommended <sup>†</sup>For tile, stone or other hard surfaced walls only



## A TOUCH-FREE FLUSH

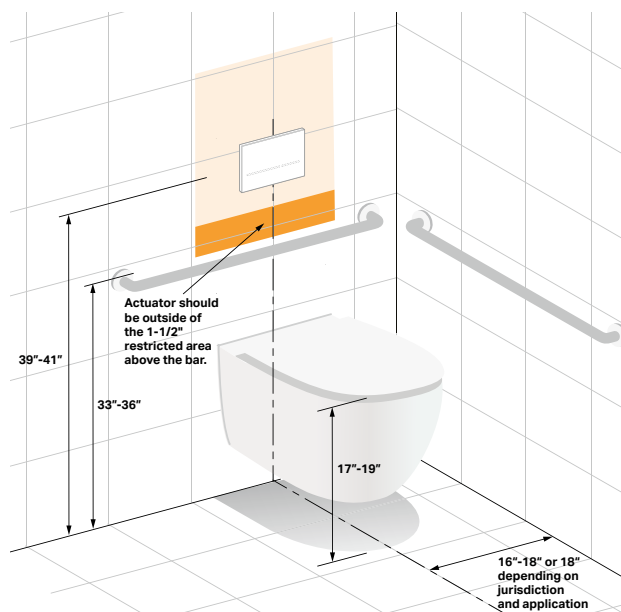
Our Geberit Sigma10 and Sigma80 hands-free flush controls use an electronic sensor to activate the flush. This is a no-touch flush plate, the ultimate in accessibility.



Sigma80



Sigma10



Style	Actuation	Flush	Material	Finish	1.6/0.8 GPF	111.335.00.5	111.798.00.1	111.012.00.1
					1.28/0.8 GPF	111.902.00.5	111.597.00.1	111.018.00.1
Hands-free Actuators								
Sigma10	AC	Dual	Plastic	Polished Chrome-Matte Chrome		115.907.KH.1	—	—
				White-Polished Chrome		115.907.KJ.1		
				White-Polished Gold		115.907.KK.1		
				White-Matte Chrome		115.907.KL.1		
				Black-Polished Chrome		115.907.KM.1		
			Matte Chrome-Polished Chrome		115.907.KN.1			
	Metal		Brushed Stainless Steel-Polished Stainless Steel		115.907.SN.1	115.856.SN.1		
			Brushed Stainless Steel-Polished Stainless Steel (with manual override for public space)		115.890.SN.5			
	Battery		Plastic	Polished Chrome-Matte Chrome		115.908.KH.1	—	
				White-Polished Chrome		115.908.KJ.1		
				White-Polished Gold		115.908.KK.1		
				White-Matte Chrome		115.908.KL.1		
				Black-Polished Chrome		115.908.KM.1		
				Matte Chrome-Polished Chrome		115.908.KN.1		
			Metal	Brushed Stainless Steel-Polished Stainless Steel		115.908.SN.1		
				Brushed Stainless Steel-Polished Stainless Steel (with manual override for public space)		115.891.SN.5		
Sigma80	AC	Glass	Black		116.090.SG.1	116.092.SG.1		
			Mirror		116.090.SM.1	116.092.SM.1		
Accessories for Hands-free Actuators								
Connection cable (optional) length 78–3/4" (2 m)					242.658.00.1*		—	
Extension mains cable, length 78–3/4" (2 m)					241.831.00.1*			
Transformer for AC powered hands-free actuator					115.861.00.1**			

\*Optional \*\*Recommended †For tile, stone or other hard surfaced walls only



## WATER SAVING SINGLE FLUSH

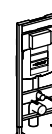
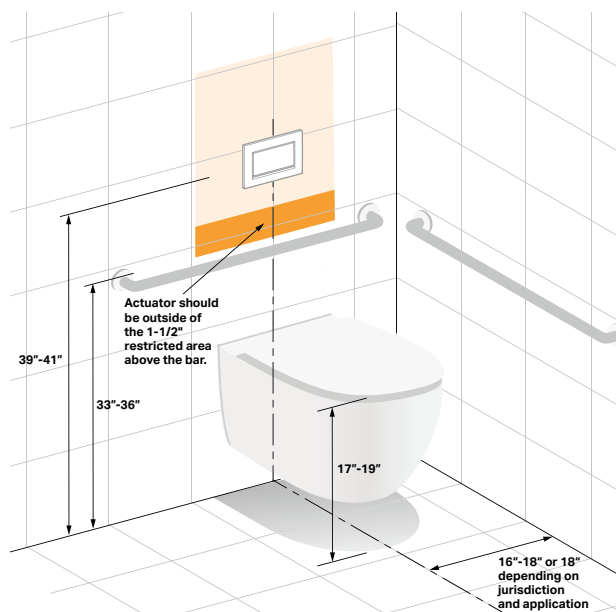
Geberit has equipped the single flush Sigma10 and Sigma30 flush plates with a stop-and-go flush function that lets the user interrupt the standard flush cycle: you decide precisely how much water you want to use (or save). Simply push to flush, and push again to stop. Not all jurisdictions accept dual-flush. Geberit offers this unique solution for those areas.



Sigma30



Sigma10



Style	Actuation	Flush	Material	Finish	1.6/0.8 GPF	111.335.00.5	111.798.00.1	111.012.00.1
					1.28/0.8 GPF	111.902.00.5	111.597.00.1	111.018.00.1
Single-Flush Buttons for Concealed Installations								
Sigma10†	Manual	Single	Metal	Matte Black-Polished Chrome-Matte Black		115.758.14.5	115.758.14.5	—
				Matte White-Polished Chrome-Matte White		115.758.JT.5	115.758.JT.5	
				Brass Stainless Steel-Polished SS-Brass Stainless Steel		115.758.SN.5	115.758.SN.5	
				Brass Stainless Steel-Polished SS-Brass Stainless Steel VR		115.787.SN.5	115.787.SN.5	
			Plastic	Polished Chrome-Matte Chrome-Polished Chrome		115.758.KH.5	115.758.KH.5	
				White-Polished Chrome-White		115.758.KJ.5	115.758.KJ.5	
				White-Polished Gold-White		115.758.KK.5	115.758.KK.5	
				White-Matte Chrome-Matte Chrome		115.758.KL.5	115.758.KL.5	
				Black-Polished Chrome-Black		115.758.KM.5	115.758.KM.5	
				Matte Chrome-Polished Chrome-Matte Chrome		115.758.KN.5	115.758.KN.5	
Sigma30†		Die Cast Metal	Matte Black-Polished Chrome-Matte Black		115.893.14.1	115.893.14.1		
			Matte White-Polished Chrome-Matte White		115.893.JT.1	115.893.JT.1		
			Polished Gold		115.893.45.1	115.893.45.1		
			White-Polished Chrome-White		115.893.KJ.1	115.893.KJ.1		
			Brass Chrome-Polished Chrome-Brass Chrome		115.893.KX.1	115.893.KX.1		
			Polished Chrome-Brass Chrome-Polished Chrome		115.893.KY.1	115.893.KY.1		

\*Optional \*\*Recommended <sup>†</sup>For tile, stone or other hard surfaced walls only <sup>‡</sup>Not intended to be sold in California with 1.6 GPF units.



**Geberit**

2100 S. Clearwater Drive  
Des Plaines, IL 60018  
USA

P 800-566-2100

F 847-849-1845

**[www.geberit.us](http://www.geberit.us)**

Geberit North America is part of the Geberit Group, a European market leader and global provider of sanitary technology. Located in Des Plaines, Illinois, Geberit North America provides concealed tank and carrier systems for wall-hung and floor-mounted toilets and fixtures. Geberit systems improve the look of any bathroom by hiding the unsightly toilet tank. Replacing a standard tank and toilet with the Geberit system results in more usable space, improved hygiene and better accessibility. The unique dual-flush valve saves water and is practically maintenance free. Geberit also offers cable-controlled bath waste and overflows in a variety of designer finishes. Critical working parts are outside the waterway, ensuring years of trouble-free operation.

For more information, contact your Geberit sales representative, call 800/566-2100 or go to **[www.geberit.us](http://www.geberit.us)**

