

SMOOTH FLUSH MOUNT

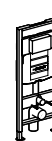
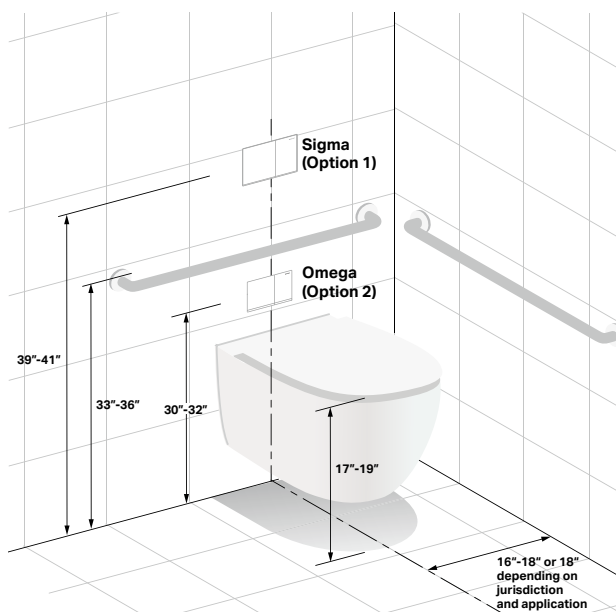
The Geberit Sigma60 and Omega 60 actuator plate mounts evenly with the wall surface for a sleek, safe minimalist appearance. Its streamlined design has no protruding edges, enhancing the feeling of spaciousness and safety in your bathroom.



Sigma60



Omega60



Style	Actuation	Flush	Material	Finish	1.6/0.8 GPF	111.335.00.5	111.798.00.1	111.012.00.1
					1.28/0.8 GPF	111.902.00.5	111.597.00.1	111.018.00.1
Dual-Flush Actuator Plates								
Sigma60†	Manual	Dual	Die Cast	Brushed Chrome		115.640.GH.1	115.640.GH.1	—
			Glass	White Glass/Aluminum		115.640.SI.1	115.640.SI.1	—
				Black Glass/Aluminum		115.640.SJ.1	115.640.SJ.1	—
				Umber Glass/Aluminum		115.640.SQ.1	115.640.SQ.1	—
				Rough-in set (REQUIRED accessory)		243.168.00.1	—	—
				Cover frame (when needed) Brushed Chrome		115.641.21.1	115.641.21.1	115.641.21.1
			Cover frame (when needed) Polished Chrome		115.641.GH.1	115.641.GH.1	115.641.GH.1	
Omega60†	Manual	Dual	Die Cast	Brushed Chrome		—	—	115.081.GH.1
			Glass	White Glass/Aluminum		—	—	115.081.SI.1
				Black Glass/Aluminum		—	—	115.081.SJ.1
				Umber Glass/Aluminum		—	—	115.081.SQ.1
			Die Cast	Cover frame (when needed) Brushed Chrome		—	—	115.086.GH.1
				Cover frame (when needed) Polished Chrome		—	—	115.086.21.1

*Optional **Recommended [†]For tile, stone or other hard surfaced walls only