

WATER SAVING SINGLE FLUSH

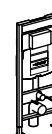
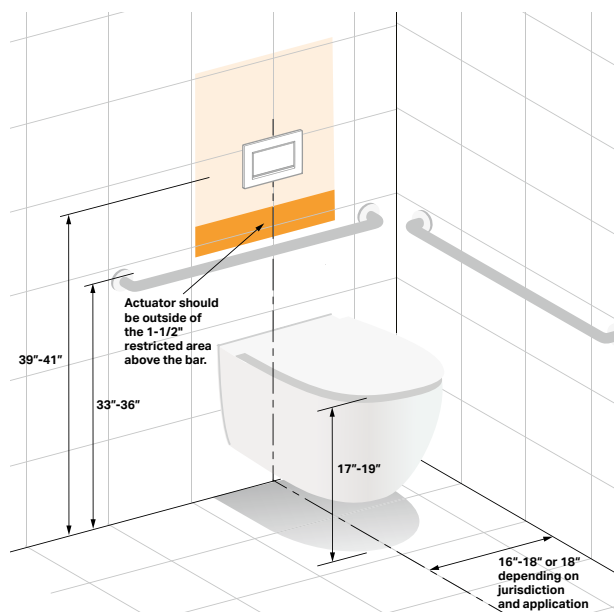
Geberit has equipped the single flush Sigma10 and Sigma30 flush plates with a stop-and-go flush function that lets the user interrupt the standard flush cycle: you decide precisely how much water you want to use (or save). Simply push to flush, and push again to stop. Not all jurisdictions accept dual-flush. Geberit offers this unique solution for those areas.



Sigma30



Sigma10



Style	Actuation	Flush	Material	Finish	1.6/0.8 GPF	111.335.00.5	111.798.00.1	111.012.00.1
					1.28/0.8 GPF	111.902.00.5	111.597.00.1	111.018.00.1
Single-Flush Buttons for Concealed Installations								
Sigma10†	Manual	Single	Metal	Matte Black-Polished Chrome-Matte Black		115.758.14.5	115.758.14.5	—
				Matte White-Polished Chrome-Matte White		115.758.JT.5	115.758.JT.5	
				Brass Stainless Steel-Polished SS-Brass Stainless Steel		115.758.SN.5	115.758.SN.5	
				Brass Stainless Steel-Polished SS-Brass Stainless Steel VR		115.787.SN.5	115.787.SN.5	
			Plastic	Polished Chrome-Matte Chrome-Polished Chrome		115.758.KH.5	115.758.KH.5	
				White-Polished Chrome-White		115.758.KJ.5	115.758.KJ.5	
				White-Polished Gold-White		115.758.KK.5	115.758.KK.5	
				White-Matte Chrome-Matte Chrome		115.758.KL.5	115.758.KL.5	
				Black-Polished Chrome-Black		115.758.KM.5	115.758.KM.5	
				Matte Chrome-Polished Chrome-Matte Chrome		115.758.KN.5	115.758.KN.5	
Sigma30†	Manual	Single	Die Cast Metal	Matte Black-Polished Chrome-Matte Black		115.893.14.1	115.893.14.1	
				Matte White-Polished Chrome-Matte White		115.893.JT.1	115.893.JT.1	
				Polished Gold		115.893.45.1	115.893.45.1	
				White-Polished Chrome-White		115.893.KJ.1	115.893.KJ.1	
				Brass Chrome-Polished Chrome-Brass Chrome		115.893.KX.1	115.893.KX.1	
				Polished Chrome-Brass Chrome-Polished Chrome		115.893.KY.1	115.893.KY.1	

*Optional **Recommended [†]For tile, stone or other hard surfaced walls only [‡]Not intended to be sold in California with 1.6 GPF units.