

# GEBERIT INSTALLATION SYSTEM

## 0.5 GPF (1.9 LPF) Wall-Hung Urinals

### SPECIFICATIONS

In-Wall Duofix concealed carrier system with actuator flush panel for residential 2-hole wall-hung urinals. System shall fit within 3" (75 mm) framing wall or plumbing chase. Framing members should provide support similar to 2" x 6" (51 mm x 152 mm) wood construction or steel framing members placed 19 3/4" (500 mm) apart. Water supply shall have flow diameter no smaller than 1/2" (13 mm) copper tube, and a minimum flow pressure of 15 PSI (0.10 MPa). The urinal shall be a third party listed maximum 0.5 GPF (1.9 LPF) 2-hole wall-hung type. The carrier frame shall be

adjustable. Actuator flush panels shall be die-cast zinc, molded plastic or fabricated stainless steel and plated to preserve material integrity. All components shall be compliant with applicable codes and product standards.

### FEATURES

- Water consumption - 0.5 GPF (1.9 LPF)
- 16-gauge, powder-coated, structural-steel tubing rated to 110 lbs (50 kg) without damage to finished wall or carrier unit
- 44 1/16" (1119 mm) frame height depending on urinal
- Installation hardware included

Complies with the latest editions of:

- ASME: A112.6.2
- ASSE 1037
- CSA B125.3

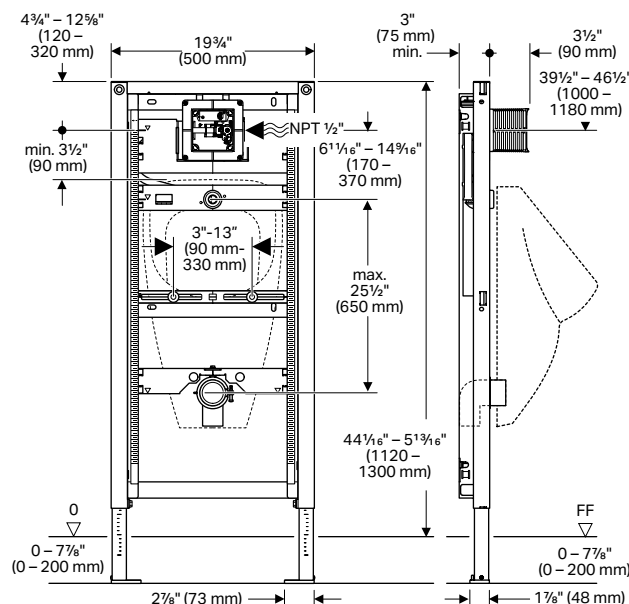
### WARRANTY

- Limited lifetime warranty on flush valve and carrier. One-year warranty on actuator flush plates

### NOTES:

1. Carrier for 2-hole "Euro" style wall-hung urinal fixtures only
2. ASSE 1001 Certified Atmospheric Vacuum Breaker included.
3. Not intended to be sold in California unless paired with 0.125 GPF or less Geberit urinal flush control.
4. Refer to [geberit.us](http://geberit.us) for latest list of code-approved compatible urinal fixtures.

Model No.	Description
111.625.00.1	Carrier frame with rough-in box



Products marked with comply with the American Disabilities Act (ADA) when installed per the requirements of the latest ADA Accessibility Guidelines (ADAAG) and/or ICC/ANSI A117.1.



### ARCHITECT/ENGINEER APPROVAL

Job Name: \_\_\_\_\_

Date: \_\_\_\_\_ Quantity: \_\_\_\_\_

Model Specified: \_\_\_\_\_

Variations Specified: \_\_\_\_\_

Customer/Wholesaler: \_\_\_\_\_

Contractor: \_\_\_\_\_

Architect: \_\_\_\_\_



Geberit  
2100 S. Clearwater Drive  
Des Plaines, IL 60018  
USA

P 847-803-7777  
F 847-849-1845

[www.geberit.us](http://www.geberit.us)

# GEBERIT INSTALLATION SYSTEM

## 0.5 GPF (2 LPF) WaterSense Listed

### WATERSENSE LISTED EPA HIGH EFFICIENCY COMPATIBLE 0.5 GPF (2 LPF) WALL-HUNG URINAL MODELS



Brand Name	Model Number*	Model Name
Duravit	082135	Starck 3
	280930	ME by Starck
	280032	Vero
	280132	Vero

Geberit  
2100 S. Clearwater Drive  
Des Plaines, IL 60018  
USA

P 847-803-7777  
F 847-849-1845

[www.geberit.us](http://www.geberit.us)

© 2020 Geberit. Product specifications subject to change without notice.