

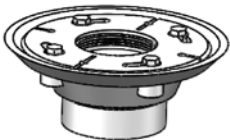
SITE SIZABLE (S) PVC CHANNEL

Installation

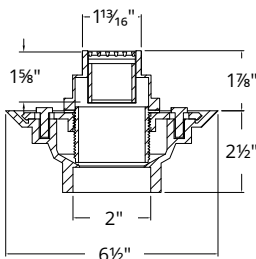
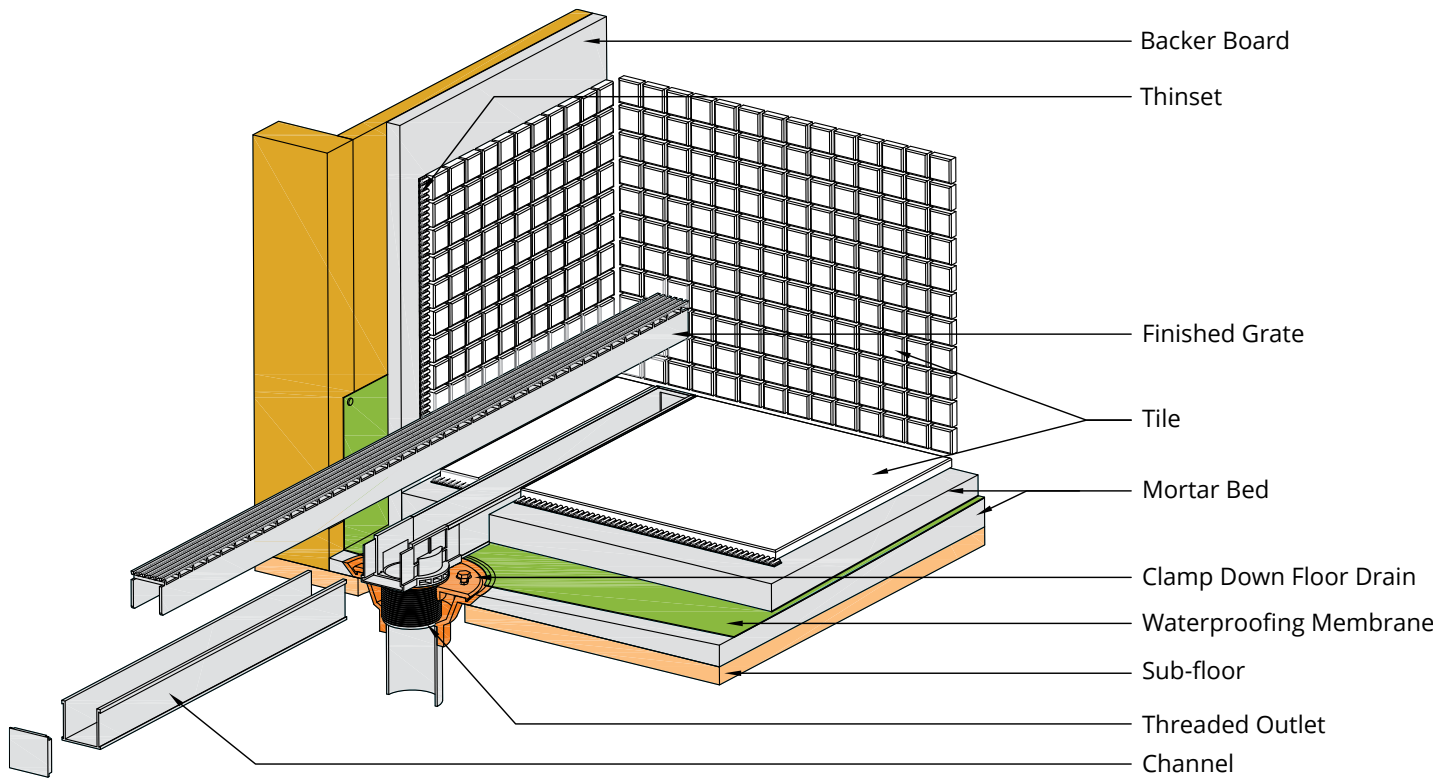
For an exact wall-to-wall installation. The channel and grate length can be cut on-site, and the drain outlet can be located anywhere along the channel run. Available in kit lengths or sold as individual components.

Waterproofing via clamping floor drain:

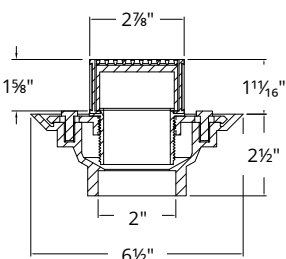
- Copper Pan
 - Hot Mop
 - PVC Liner
- Fiberglass
 - Lead Pan
 - Rubber Liner (Chloraloy®)



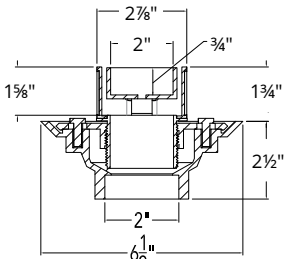
Clamping floor drain sold separately



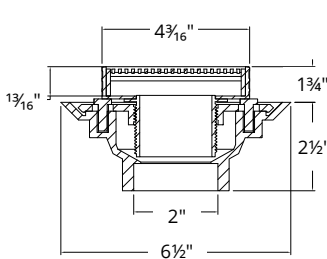
S-AG 38, S-DG 38



S-AG 65, S-DG 65



S-TIF 65



S-AG 100

SITE SIZABLE (S) PVC CHANNEL

	Series	Kit Length	SKU	Finish Options	GPM
 1 13/16" W x 1 5/8" D	S-AG 38 Grate: 12 gauge, 316 stainless steel	36"	S-AG 3836	Satin Stainless (SS) Polished Stainless (PS) Lifetime Oil Rubbed Bronze (ORB)	9 GPM per outlet
		48"	S-AG 3848		
		60"	S-AG 3860		
		96"	S-AG 3896		
 2 7/8" W x 1 5/8" D	S-AG 65 Grate: 12 gauge, 316 stainless steel	36"	S-AG 6536	Satin Stainless (SS) Polished Stainless (PS) Lifetime Oil Rubbed Bronze (ORB)	16 GPM per outlet
		48"	S-AG 6548		
		60"	S-AG 6560		
		96"	S-AG 6596		
 4 3/16" W x 1 13/16" D	S-AG 100 Grate: 12 gauge, 316 stainless steel	48"	S-AG 10048	Satin Stainless (SS) Polished Stainless (PS)	9 GPM per outlet
		96"	S-AG 10096		
 1 13/16" W x 1 5/8" D	S-DG 38 Grate: 16 gauge, 304 stainless steel	48"	S-DG 3848	Satin Stainless (SS) Polished Stainless (PS) Lifetime Oil Rubbed Bronze (ORB)	9 GPM per outlet
		60"	S-DG 3860		
		96"	S-DG 3896		
 2 7/8" W x 1 5/8" D	S-DG 65 Grate: 16 gauge, 304 stainless steel	48"	S-DG 6548	Satin Stainless (SS) Polished Stainless (PS) Lifetime Oil Rubbed Bronze (ORB)	16 GPM per outlet
		60"	S-DG 6560		
		96"	S-DG 6596		
 2 7/8" W x 1 5/8" D	S-TIF 65 Grate: 12 gauge, 316 stainless steel	40"	S-TIF 6540	Satin Stainless (SS) Polished Stainless (PS)	9 GPM per outlet
		48"	S-TIF 6548		
		60"	S-TIF 6560		
		80"	S-TIF 6580		
		96"	S-TIF 6596		