

# BAND-SEAL®

End Caps

## BAND-SEAL®

End Caps & End Caps with Hose Bibb



1½" to 12"

Flexible rubber end caps for capping pipe ends. Listed by IAPMO for **"Permanent Clean Out"** applications. *Recommended for above ground installations.*

### COMPONENTS

Clamp: 301 Series Stainless Steel, Worm Drive (1)

Gasket: Molded, One-Piece, Elastomeric Sealing Cap



### RECOMMENDED TOOLS

SEEKONK Pre-Set Torque Wrench: 60 in/lbs; ⅝" hex head

### END CAPS

PART	SIZE	PIPE
0701011	1½"	CI/PL/ST
0702019	2"	CI/PL/ST
0703017	3"	CI/PL/ST
0704015	4"	CI/PL/ST
0705020	5"	CI/PL/ST
0706028	6"	CI/PL/ST
0708016	8"	CI/PL/ST
0710017	10"	CI/PL/ST
0712018	12"	CI/PL/ST

**FOR:** Cast Iron (CI) | Plastic (PL) | Steel (ST)



Flexible rubber end caps with integrated hose bibb for capping pipe ends. Direct water flow and drainage during and after testing.

Valve: Brass, ½" Sillcock Valve, ½" Inlet, ¾" Outlet, Male Hose Thread

### END CAPS W/HOSE BIBB

PART	SIZE	PIPE
0701516	1½"	CI/PL
0702514	2"	CI/PL
0703512	3"	CI/PL
0704510	4"	CI/PL
0705517	5"	CI/PL
0706515	6"	CI/PL



**EASY**  
MISSIONMADE™ products are easy to install and reuse.

### DURABLE

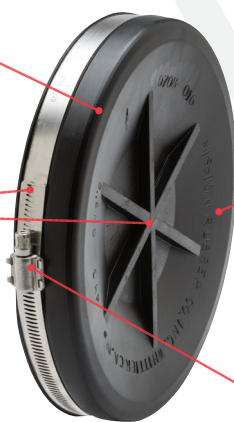
**Molded, synthetic rubber cap** resists ultraviolet rays, ozone, fungus growth, natural soil erosive properties, and normal sewer gases.

### LEAKPROOF

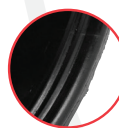
Increased band tension secures pipe end, forming a **watertight seal**. Strong, molded "ASTERISK" braces end cap against head pressure during testing.

### ANTICORROSIVE

**Stainless steel components resist corrosion** in a variety of environments.



(8" End Cap)



### SECURE

**Tight-fitting internal cone** creates wedge inside pipe, balancing outward strains against steel clamp. Sealing "O" Rings under clamp prevent pipe end slippage for a **reinforced joint seal**.

### RESILIENT

**Synthetic rubbers permit** considerable distortion **withstanding tension and compression**. More pliable and **easier to install in cold weather** applications than an elastomeric PVC cap.



### ADAPTABLE

For **permanent or temporary** clean outs. Independent clamp tightening **adapts to different outside pipe diameters**.

## SPECIFICATIONS

Natural and synthetic rubbers conform to ASTM C564 and ASTM C1173

300 Series Stainless Steel conforms to ASTM A240/A240M

IAPMO FILE 2101 listed