

**Mueller Streamline Co.****Address:** 8285 Tournament Dr., Suite 150

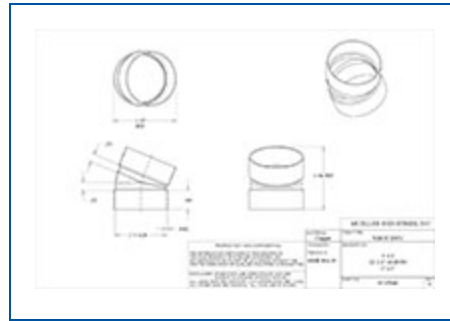
Memphis, TN 38125

Ph: 901-753-3200**Email:** contact@muellerindustries.com**Web:** <http://www.muellerindustries.com/>

Item # W 07060, 22.5° Elbow, C x C, 1-1/2"

Streamline® Copper Solder-Joint Fittings for DWV plumbing applications are available in both wrot copper and cast bronze materials. Designed for use in non-pressurized sanitary systems, these fittings commonly feature shorter solder cup designs and more sweeping turns. They are available in a wide range of diameters styles and connections to meet most all sanitary system applications.

- For use in non-pressurized drain, waste and vent sanitary systems
- Constructed of high-grade copper or bronze materials
- Made to applicable ASME standards B16.23, B16.29
- Wrot fittings meet NSF 61G


[Specifications](#) | [Dimensions](#) | [Details](#)

Specifications

Weight	0.265 lb
Material	WROT COPPER
Operating Temperature	CDA-Copper-Fitting-Pressue-Temp-Ratings
Operating Pressure	CDA-Copper-Fitting-Pressue-Temp-Ratings
End Type	C - Cup (Female Solder)
End Size	1 1/2 in
Second End Type	C - Cup (Female Solder)
Second End Size	1 1/2 in

Standards

ASME B16.23
ASME B16.29

Dimensions

Overall Length	2.16 in
Overall Height	2.09 in
Overall Width	2.09 in

Details

Style	DW-703
Qty Pcs / Bag	10
Master Qty Pcs / Box	100
Mueller Description 1	1-1/2 C X C DWV 22 1/2 E
Mueller Description 2	1-5/8OD DWV 22 1/2 ELL