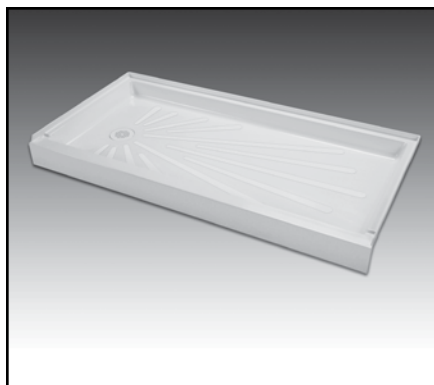




MUSTEE
Preferred by the "Pros"

3060 ShowerTub™ Easy Access Shower Floor

SEE PAGES 2-5 FOR A LIST OF ACCESSORIES!



Design features:

- Produced from high-grade, reinforced, molded fiberglass for optimum strength and impact resistance using matched metal molds under heat and pressure.
- Ideal for new or remodel projects...fits DURAWALL® Shower Walls (see Accessories section) as well as ceramic tile or preformed wall kit.
- Fits 60" wide by 30" deep alcove...same footprint as a standard bathtub
- Drain hole is offset 8-1/2" x 15" for connection to 2" DWV piping
- Easy entry 4-1/2" threshold
- Slip resistant Starburst® surface helps rapidly evacuate water to the drain
- Available in both LH and RH drain locations
- Available in white or bone
- Smooth, colorfast semi-gloss finish, resists scuffs.
- Mold and mildew-resistant...easy to clean
- Available STYLEMATE® shower enclosures feature tempered safety glass and a range of finishes (see Accessories section).

Code Accepted

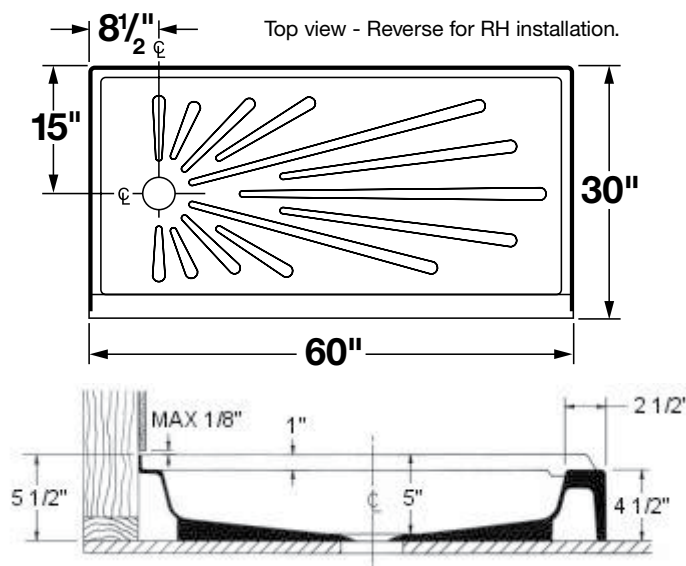
- IAMPO® Listed
- American Society of Testing and Materials (ASTM) – D.635, E-84 and E-162 Fire Retardancy
- American National Standards Institute (ANSI) Specification Z 124-2011
- Inhalation Toxicity Test



Specifications

Model	Description	Drain Location	Fits Alcove	UPC
3060R	White	RH	30" x 60"	6 71031 00355 5
3060RBN	Bone	RH	30" x 60"	6 71031 00356 0
3060L	White	LH	30" x 60"	6 71031 00357 7
3060LBN	Bone	LH	30" x 60"	6 71031 00358 4

General: Furnish and install as shown on plans, CareGiver™ ShowerTub™ model 3060 as manufactured by E.L. Mustee & Sons, Inc. Floor to be one-piece, molded fiberglass, using matched metal molds under extreme heat and pressure. Surface to be slip-resistant design that does not interfere with flow of water. Size: 30" x 60". Flood level rim will be not less than 3" high. Tiling flange will extend not less than 1" higher than the threshold which is an integral molded water barrier. Threshold will be 4-1/2" high. Offset 2" drain hole on 8-1/2" by 15" centers to accept standard 1-1/2" tub waste. Available on right or left hand. Color ____ (White, Bone).



MUSTEE

E.L. Mustee & Sons, Inc. • 5431 West 164th Street • Brook Park, OH 44142 • Phone: 216.267.3100 • Fax: 216.267.9997
E-mail: info@mustee.com • Web: www.mustee.com • Proudly made in the USA

Notice: Our continuous commitment to product improvement may result in changes to product specifications without notice.
Patents pending. Made and Printed in U.S.A.



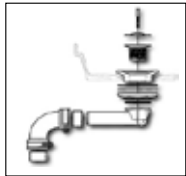
MUSTEE
Preferred by the "Pros"

3060 ShowerTub™ Easy Access Shower Floor Accessories

MORE ON PAGE 3 ►

► Drain Assemblies

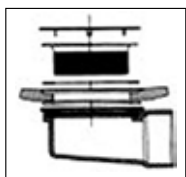
60.300A, 60.300ABN Drain Assembly



Model	Color	UPC
60.300A	White	6 71031 00392 8
60.300ABN	Bone	6 71031 00393 5

Use to replace bathtub waste line and connect to existing DWV sanitary pipe.

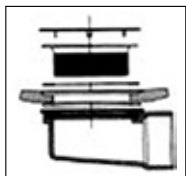
82.400A Drain Assembly



Model	Color	UPC
82.400A		6 71031 00220 4

PVC drain assembly for 1-1/2" PVC pipe solvent welded DWV sanitary pipe.

42.400A Drain Assembly



Model	Color	UPC
42.400A		

PVC drain assembly for 2" PVC pipe solvent welded DWV sanitary pipe.

42.317A, 42.320, 42.321 Drain Assembly



Model	Color	UPC
42.317A	Drain assembly	6 71031 00167 2
42.320 Optional	Drain for 2" copper (DWV)	6 71031 00309 6
42.321 Optional	Drain seal for 2" soil pipe (SW)	

Use to replace bathtub waste line and connect to existing DWV sanitary pipe.



MUSTEE

E.L. Mustee & Sons, Inc. • 5431 West 164th Street • Brook Park, OH 44142 • Phone: 216.267.3100 • Fax: 216.267.9997
E-mail: info@mustee.com • Web: www.mustee.com • Proudly made in the USA

Notice: Our continuous commitment to product improvement may result in changes to product specifications without notice.
Patents pending. Made and Printed in U.S.A.