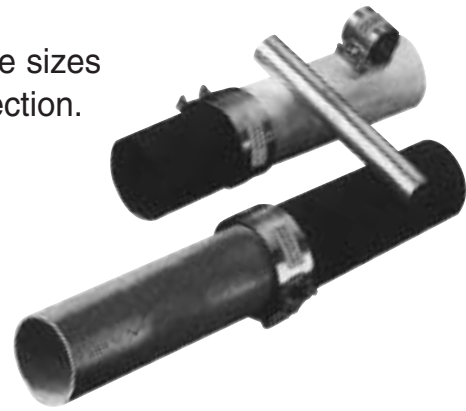


# Band-Seal® Specialty Couplings

Shielded Transition Couplings join similar and dissimilar pipe sizes and pipe materials. Sizes 3/4" to 8" make almost any connection.

- Meets and exceeds material and performance requirements of ASTM C 1460
- Resists shear forces while maintaining alignment
- Corrosion-resistant 300 Series stainless steel components
- Creates a rigid, durable, long-lasting joint
- Internal rubber sleeve reduces noise and vibration
- Easy to assemble, disassemble and reuse
- Neoprene rubber sleeve conforms to ASTM C 564
- Stainless steel meets ASTM M240A



- |                                |                                   |                                |
|--------------------------------|-----------------------------------|--------------------------------|
| <b>K</b> Copper                | <b>XHCI</b> Extra Heavy Cast Iron | <b>TWP</b> Thinwall Plastic    |
| <b>C</b> Cast Iron             | <b>ST</b> Steel                   | <b>BWT</b> Bathwaste Tailpiece |
| <b>S</b> Stainless Steel       | <b>D</b> Duriron®                 | Kimax®                         |
| <b>P</b> Plastic (Schedule 40) |                                   |                                |

## FOR JOINING CAST IRON PIPE

TO JOIN	USE COUPLING	TO JOIN	USE COUPLING	TO JOIN	USE COUPLING
<b>1 1/2" CAST IRON TO-</b>					
3/4" Plastic	CK110	3" Copper	KC32	2" Plastic	C420
3/4" Steel	CK110	3" Cast Iron	C320	2" Steel	C420
1" Copper	CK110	3" Plastic	PC32	2 1/2" Stainless Steel	CS425
1" Plastic	CK1125	3" Steel	PC32	2 1/2" Copper	CK425
1" Steel	CK1125	3" Extra Hvy Cast Iron	PC32	3" Copper	CK43
1 1/4" Copper	CK1125	4" Cast Iron	C420	3" Cast Iron	C430
1 1/4" Plastic	CK115	<b>3" CAST IRON TO-</b>			
1 1/4" Steel	CK115	1 1/4" Plastic	CK315	3" Steel	CP43
1 1/4" Stainless Steel	CS15-125	1 1/4" Steel	CK315	3" Extra Hvy Cast Iron	CP43
1 1/2" Copper	CK115	1 1/2" Copper	CK315	3" Thinwall Plastic	TWC34
1 1/2" Plastic	CP150	1 1/2" Cast Iron	C315	3" Stainless Steel	CS43
1 1/2" Steel	CP150	1 1/2" Steel	C315	4" Copper	CK44
1 1/2" Bathwaste Tailpiece	T150	1 1/2" Plastic	C315	4" Plastic	CP44
2" Copper	KC215	1 1/2" Steel	C315	4" Steel	CP44
2" Plastic	CP215	2" Copper	CK32	4" Extra Hvy Cast Iron	CP44
2" Steel	CP215	2" Cast Iron	C320	4" Thinwall Plastic	TWC44
3" Cast Iron	C315	2" Plastic	C320	4" Cast Iron	C540
3" Plastic	P315	2" Steel	C320	5" Cast Iron	C640
3" Steel	P315	2 1/2" Stainless Steel	CS325	<b>5" CAST IRON TO-</b>	
3" Extra Hvy Cast Iron	P315	2 1/2" Copper	CK325	3" Cast Iron	C530
<b>2" CAST IRON TO-</b>					
1" Copper	CK210	3" Copper	CK33	4" Cast Iron	C540
1" Plastic	CK2125	3" Plastic	CP33	5" Plastic	CP55
1" Steel	CK2125	3" Stainless Steel	CS33	5" Steel	CP55
1 1/4" Stainless Steel	CS2125	3" Extra Hvy Cast Iron	CP33	5" Cast Iron	C650
1 1/4" Copper	CK2125	3" Thinwall Plastic	TWC33	5" Extra Hvy Cast Iron	CP55
1 1/4" Plastic	CK215	4" Copper	CK43	<b>6" CAST IRON TO-</b>	
1 1/4" Steel	CK215	4" Cast Iron	C430	3" Cast Iron	C630
1 1/2" Copper	CK215	4" Plastic	PC43	4" Cast Iron	C640
1 1/2" Plastic	CP215	4" Steel	PC43	5" Cast Iron	C650
1 1/2" Steel	CP215	4" Extra Hvy Cast Iron	CP43	6" Plastic	CP66
1 1/2" Bathwaste Tailpiece	T215	4" Thinwall Plastic	TWC43	6" Steel	CP66
2" Copper	CK22	5" Cast Iron	C530	6" Extra Hvy Cast Iron	CP66
2" Plastic	CP200	6" Cast Iron	C630	<b>8" CAST IRON TO-</b>	
2" Steel	CP200	<b>4" CAST IRON TO-</b>			
2 1/2" Plastic	P2250	2" Copper	CK42	8" Plastic	CP88
2 1/2" Steel	P2250	2" Cast Iron	C420	8" Steel	CP88
				8" Extra Hvy Cast Iron	CP88

## FOR JOINING EXTRA HEAVY CAST IRON PIPE

TO JOIN	USE COUPLING	TO JOIN	USE COUPLING	TO JOIN	USE COUPLING
<b>3" EXTRA HEAVY CAST IRON TO-</b>					
1 1/2" Cast Iron	C315	4" Steel	P430	<b>5" EXTRA HEAVY CAST IRON TO-</b>	
1 1/2" Plastic	P315	4" Extra Hvy Cast Iron	P430	5" Cast Iron	CP55
1 1/2" Steel	P315	4" Thinwall Plastic	TWP43	5" Plastic	P500
2" Copper	PK32	<b>4" EXTRA HEAVY CAST IRON TO-</b>			
2" Cast Iron	PC32	3" Copper	PK43	6" Cast Iron	CP66
2" Plastic	PC32	3" Cast Iron	PC43	6" Plastic	P600
2" Steel	PC32	3" Steel	P430	6" Steel	P600
3" Copper	PK33	3" Extra Hvy Cast Iron	P430	6" Extra Hvy Cast Iron	P600
3" Cast Iron	CP33	3" Stainless Steel	PS43	<b>8" EXTRA HEAVY CAST IRON TO-</b>	
3" Plastic	P300	4" Copper	PK44	8" Cast Iron	CP88
3" Stainless Steel	PS33	4" Cast Iron	CP44	8" Plastic	P800
3" Extra Hvy Cast Iron	P300	4" Plastic	P400	8" Steel	P800
3" Thinwall Plastic	TWP33	4" Steel	P400	8" Extra Hvy Cast Iron	P800
4" Cast Iron	CP43	4" Extra Hvy Cast Iron	P400		
4" Plastic	P430	4" Thinwall Plastic	TWP44		

## CHEMICAL RESISTANT COUPLINGS

Product No.	Description
<b>P 150 FKM</b>	1 1/2" CI, PL, ST, Kimax® to 1 1/2" CI, PL, ST, Kimax®
<b>P 200 FKM</b>	2" CI, PL, ST, Kimax® to 2" CI, PL, ST, Kimax®
<b>P 300 FKM</b>	3" CI, PL, ST, Kimax® to 3" CI, PL, ST, Kimax®
<b>P 400 FKM</b>	4" CI, PL, ST, Kimax® to 4" CI, PL, ST, Kimax®
<b>P 600 FKM</b>	6" PL, ST, Kimax® to 6" PL, ST, Kimax®
<b>D 200 FKM</b>	2" Duriron® to 2" Duriron®
<b>D 300 FKM</b>	3" Duriron® to 3" Duriron®
<b>D 400 FKM</b>	4" Duriron®, AC, DI to 4" Duriron®, AC, DI
<b>DC 33 FKM</b>	3" Duriron® to 3" CI
<b>DC 44 FKM</b>	4" Duriron® to 4" CI
<b>DP 150 FKM</b>	1 1/2" Duriron® to 1 1/2" CI, PL, ST, Kimax®
<b>DP 22 FKM</b>	2" Duriron® to 2" CI, PL, ST, Kimax®
<b>DP 33 FKM</b>	3" Duriron® to 3" PL, ST, Kimax®
<b>DP 44 FKM</b>	4" Duriron® to 4" PL, ST, Kimax®

## FOR JOINING COPPER

TO JOIN	USE COUPLING	TO JOIN	USE COUPLING
<b>3/4" COPPER TO-</b>			
3/4" Copper (O.D. .875)	K075	<b>2" COPPER TO-</b>	
<b>1" COPPER TO-</b>			
3/4" Plastic	P075	1" Plastic	K215
3/4" Steel	P075	1 1/4" Copper	K215
1" Copper	P075	1 1/4" Steel	K215
1" Plastic	P175	1 1/4" Stainless Steel	KS215
1" Steel	P175	1 1/2" Copper	K215
1 1/4" Copper	P175	1 1/2" Cast Iron	CK215
1 1/2" Cast Iron	CK110	1 1/2" Plastic	CK215
1 1/2" Plastic	CK110	1 1/2" Steel	CK215
1 1/2" Steel	CK110	1 1/2" Bathwaste Tailpiece	KT215
2" Cast Iron	CK210	2" Copper	K200
<b>1 1/4" COPPER TO-</b>			
3/4" Plastic	P175	2" Cast Iron	CK22
3/4" Steel	P175	2" Plastic	CK22
1" Copper	P175	2" Steel	CK22
1" Plastic	P100	3" Copper	K320
1" Steel	P100	3" Cast Iron	CK32
1 1/4" Copper	P100	3" Plastic	PK32
1 1/4" Plastic	K1125	3" Steel	PK32
1 1/4" Steel	K1125	3" Extra Hvy Cast Iron	PK32
1 1/2" Copper	K1125	4" Cast Iron	CK42
1 1/2" Cast Iron	CK1125	<b>2 1/2" COPPER TO-</b>	
1 1/2" Plastic	CK1125	2 1/2" Copper	K250
1 1/2" Steel	CK1125	3" Cast Iron	CK325
2" Copper	K2125	4" Cast Iron	CK425
2" Cast Iron	CK2125	<b>3" COPPER TO-</b>	
2" Plastic	CK2125	2" Copper	K320
2" Steel	CK2125	2" Cast Iron	CK32
<b>1 1/2" COPPER TO-</b>			
1" Plastic	K1125	2" Plastic	CK32
1" Steel	K1125	2" Steel	CK32
1 1/4" Copper	K1125	3" Copper	K300
1 1/4" Plastic	K150	3" Cast Iron	CK33
1 1/4" Steel	K150	3" Plastic	PK33
1 1/4" Stainless Steel	KS15-125	3" Steel	PK33
1 1/2" Copper	K150	3" Extra Hvy Cast Iron	PK33
1 1/2" Cast Iron	CK115	4" Copper	K430
1 1/2" Plastic	CK115	4" Cast Iron	CK43
1 1/2" Steel	CK115	4" Plastic	PK43
2" Bathwaste Tailpiece	KT150	4" Steel	PK43
2" Copper	K215	4" Extra Hvy Cast Iron	PK43
2" Cast Iron	CK215	<b>4" COPPER TO-</b>	
2" Plastic	CK215	3" Copper	K430
2" Steel	CK215	3" Cast Iron	CK43
3" Cast Iron	CK315	4" Copper	K400
		4" Cast Iron	CK44
		4" Plastic	PK44
		4" Steel	PK44
		4" Extra Hvy Cast Iron	PK44



**FOR JOINING THINWALL PLASTIC** (Sewer & Drain)

TO JOIN	USE COUPLING
<b>3" THINWALL PLASTIC TO-</b>	
3" Cast Iron	TWC33
3" Plastic (Sch. 40)	TWP33
3" Steel	TWP33
3" Extra Hvy Cast Iron	TWP33
4" Cast Iron	TWC34
<b>4" THINWALL PLASTIC TO-</b>	
3" Cast Iron	TWC43
3" Plastic (Sch. 40)	TWP43
3" Steel	TWP43
3" Extra Hvy Cast Iron	TWP43
4" Cast Iron	TWC44
4" Plastic (Sch. 40)	TWP44
4" Steel	TWP44
4" Extra Hvy Cast Iron	TWP44

**FOR JOINING BATHWASTE TAILPIECE**

TO JOIN	USE COUPLING
<b>1 1/2" BATHWASTE TAILPIECE TO-</b>	
1 1/2" Copper	KT150
1 1/2" Cast Iron	T150
1 1/2" Plastic	T150
1 1/2" Steel	T150
1 1/2" Bathwaste Tailpce.	BWT150
2" Copper	KT215
2" Cast Iron	T215
2" Plastic	T215
2" Steel	T215

**FOR JOINING STAINLESS STEEL**

TO JOIN	USE COUPLING
<b>1 1/4" STAINLESS STEEL TO-</b>	
1 1/4" Plastic	KS15/125
1 1/4" Steel	KS15/125
1 1/4" Stainless Steel	CS15/125
1 1/2" Cast Iron	CS15/125
1 1/2" Copper	KS15/125
1 1/2" Plastic	CS15/125
1 1/2" Steel	CS15/125
2" Cast Iron	CS2125
2" Copper	KS2125
<b>2 1/2" STAINLESS STEEL TO-</b>	
3" Cast Iron	CS325
4" Cast Iron	CS425
<b>3" STAINLESS STEEL TO-</b>	
3" Cast Iron	CS33
3" Plastic	PS33
3" Steel	PS33
3" Stainless Steel	SS33
3" Extra Hvy Cast Iron	PS33
4" Cast Iron	CS43
4" Plastic	PS43
4" Steel	PS43
4" Extra Hvy Cast Iron	PS43

Materials	OUTSIDE PIPE DIAMETERS									
	3/4"	1"	1-1/4"	1-1/2"	2"	3"	4"	5"	6"	8"
Steel	1.050	1.315	1.660	1.900	2.375	3.500	4.500	5.560	6.620	8.620
ABS/PVC Plastic (Sched. 40)	1.050	1.315	1.660	1.900	2.375	3.500	4.500	5.560	6.620	8.620
Cast Iron				1.900	2.35	3.350	4.380	5.300	6.300	8.380
Copper	.875	1.125	1.375	1.625	2.125	3.125	4.125	5.125	6.125	8.125
Thinwall Plastic (Sewer & Drain)						3.250	4.215	5.300	6.270	8.160
Stainless Steel	.750	1.000	1.250	1.500	2.000	3.000	4.000	5.000	6.000	8.000
Extra Heavy Cast Iron					2.380	3.500	4.500	5.500	6.500	8.620
Duriron®				2.190	2.630	3.750	4.750			

**FOR JOINING SCHEDULE 40 PLASTIC (ABS-PVC)**

TO JOIN	USE COUPLING	TO JOIN	USE COUPLING
<b>3/4" PLASTIC TO-</b>			
3/4" Plastic	P075	1 1/2" Copper	CK215
3/4" Steel	P075	1 1/2" Cast Iron	CP215
3/4" Copper (IPS)	P075	1 1/2" Plastic	CP215
1" Copper	P075	1 1/2" Steel	CP215
1" Plastic	P175	1 1/2" Bathwaste Tailpiece	T215
1" Steel	P175	2" Copper	CK22
1 1/4" Copper	P175	2" Cast Iron	CP200
1 1/2" Cast Iron	CK110	2" Plastic	CP200
1 1/2" Plastic	CK110	2" Steel	CP200
1 1/2" Steel	CK110	2 1/2" Plastic	P2250
<b>1" PLASTIC TO-</b>			
3/4" Plastic	P175	2 1/2" Steel	P2250
3/4" Steel	P175	3" Copper	KC32
1" Copper	P175	3" Cast Iron	C320
1" Plastic	P100	3" Plastic	PC32
1" Copper (IPS)	P100	3" Steel	PC32
1" Steel	P100	3" Extra Hvy Cast Iron	PC32
1 1/4" Copper	P100	4" Cast Iron	C420
1 1/4" Plastic	K1125	<b>2 1/2" PLASTIC TO-</b>	
1 1/4" Steel	K1125	2" Cast Iron	P2250
1 1/2" Copper	K1125	2" Plastic	P2250
1 1/2" Cast Iron	CK1125	2 1/2" Plastic	P250
1 1/2" Plastic	CK1125	2 1/2" Steel	P250
1 1/2" Steel	CK1125	3" Plastic	P3250
2" Copper	K2125	3" Steel	P3250
2" Plastic	CK2125	<b>3" PLASTIC TO-</b>	
2" Steel	CK2125	1 1/2" Cast Iron	C315
2" Cast Iron	CK2125	1 1/2" Plastic	C315
<b>1 1/4" PLASTIC TO-</b>			
1" Plastic	K1125	1 1/2" Steel	C315
1" Steel	K1125	2" Copper	PK32
1" Copper (IPS)	K1125	2" Cast Iron	PC32
1 1/4" Copper	K1125	2" Plastic	PC32
1 1/4" Plastic	K150	2" Steel	PC32
1 1/4" Steel	K150	2 1/2" Plastic	P3250
1 1/4" Stainless Steel	KS15-125	2 1/2" Steel	P3250
1 1/2" Copper	K150	3" Copper	PK33
1 1/2" Cast Iron	CK115	3" Cast Iron	CP33
1 1/2" Plastic	CK115	3" Plastic	P300
1 1/2" Steel	CK115	3" Steel	P300
2" Copper	K215	3" Stainless Steel	PS33
2" Cast Iron	CK215	3" Extra Heavy Cast Iron	PC300
2" Plastic	CK215	3" Thinwall Plastic	TWP33
2" Steel	CK215	4" Cast Iron	CP43
3" Cast Iron	CK315	4" Plastic	P430
<b>1 1/2" PLASTIC TO-</b>			
3/4" Plastic	CK110	4" Steel	P430
3/4" Steel	CK110	4" Extra Heavy Cast Iron	P430
3/4" Copper (IPS)	CK110	4" Thinwall Plastic	TWP43
1" Copper	CK110	<b>4" PLASTIC TO-</b>	
1" Plastic	CK1125	3" Copper	PK43
1" Steel	CK1125	3" Cast Iron	P430
1 1/4" Copper	CK1125	3" Plastic	P430
1 1/4" Plastic	CK1125	3" Steel	P430
1 1/4" Steel	CK1125	3" Extra Hvy Cast Iron	P430
1 1/4" Stainless Steel	CS15-125	3" Stainless Steel	PS43
1 1/2" Copper	CK115	4" Copper	PK44
1 1/2" Cast Iron	CP150	4" Cast Iron	CP44
1 1/2" Plastic	CP150	4" Plastic	P400
1 1/2" Steel	CP150	4" Steel	P400
1 1/2" Bathwaste Tailpiece	T150	4" Extra Hvy Cast Iron	P400
2" Cast Iron	CP215	4" Thinwall Plastic	TWP44
2" Copper	CK215	<b>5" PLASTIC TO-</b>	
2" Plastic	CP215	5" Cast Iron	CP55
2" Steel	CP215	5" Plastic	P500
3" Cast Iron	C315	5" Steel	P500
3" Plastic	P315	5" Extra Hvy Cast Iron	P500
3" Steel	P315	<b>6" PLASTIC TO-</b>	
3" Extra Hvy Cast Iron	P315	6" Cast Iron	CP66
<b>2" PLASTIC TO-</b>			
1" Plastic	CK2125	6" Plastic	P600
1" Steel	CK2125	6" Steel	P600
1" Copper (IPS)	CK2125	6" Extra Hvy Cast Iron	P600
1 1/4" Copper	CK2125	<b>8" PLASTIC TO-</b>	
1 1/4" Plastic	CK215	8" Cast Iron	CP88
1 1/4" Steel	CK215	8" Plastic	P800
<b>3/4" STEEL TO-</b>			
3/4" Plastic	P075	1" Copper (IPS)	CK215
3/4" Steel	P075	1" Steel	CK215
1" Copper (IPS)	P075	1 1/4" Copper	CK1125
1" Plastic	P175	1 1/4" Plastic	CK1125
1" Steel	P175	1 1/4" Steel	CK1125
1 1/4" Copper	P175	1 1/2" Copper	CK115
1 1/2" Cast Iron	CK110	1 1/2" Cast Iron	CK115
1 1/2" Plastic	CK110	1 1/2" Plastic	CK115
1 1/2" Steel	CK110	1 1/2" Steel	CK115
<b>1" STEEL TO-</b>			
3/4" Plastic	P175	2" Copper	CK215
3/4" Steel	P175	2" Cast Iron	CK215
1" Copper	P175	2" Plastic	CK215
1" Plastic	P100	2" Steel	CK215
1" Steel	P100	3" Cast Iron	CK315
1 1/4" Copper (IPS)	P100	3" Plastic	CK2125
1 1/4" Cast Iron	CP100	3" Steel	CK2125
1 1/4" Plastic	K1125	<b>1 1/4" STEEL TO-</b>	
1 1/4" Steel	K1125	1" Plastic	K1125
1 1/2" Copper	K1125	1" Steel	K1125
1 1/2" Cast Iron	CK1125	1" Copper (IPS)	K1125
1 1/2" Plastic	CK1125	1 1/4" Copper	K1125
1 1/2" Steel	CK1125	1 1/4" Plastic	K150
2" Copper	CK2125	1 1/4" Steel	K150
2" Cast Iron	CK2125	1 1/4" Stainless Steel	KS15-125
2" Plastic	CK2125	1 1/2" Copper	K150
2" Steel	CK2125	1 1/2" Cast Iron	CK115
<b>1 1/4" STEEL TO-</b>			
1" Plastic	K1125	1 1/2" Plastic	CK115
1" Steel	K1125	1 1/2" Steel	CK115
1" Copper (IPS)	K1125	2" Copper	CK215
1 1/4" Copper	K1125	2" Cast Iron	CK215
1 1/4" Plastic	K150	2" Plastic	CK215
1 1/4" Steel	K150	2" Steel	CK215
1 1/4" Stainless Steel	KS15-125	3" Cast Iron	CK315
1 1/2" Copper	K150	3" Plastic	CK2125
1 1/2" Cast Iron	CK115	3" Steel	CK2125
1 1/2" Plastic	CK115	3" Steel	CK2125
1 1/2" Steel	CK115	3" Cast Iron	CK315
2" Copper	CK215	3" Plastic	CK2125
2" Cast Iron	CK215	3" Steel	CK2125
2" Plastic	CK2125	3" Steel	CK2125
2" Steel	CK2125	3" Cast Iron	CK315
<b>1 1/2" STEEL TO-</b>			
3/4" Plastic	CK110	3" Copper	PK43
3/4" Steel	CK110	3" Cast Iron	PC43
3/4" Copper (IPS)	CK110	3" Plastic	P430
1" Copper	CK110	3" Steel	P430
1" Plastic	CK1125	3" Extra Hvy Cast Iron	P430
1" Steel	CK1125	3" Stainless Steel	PS43
1 1/4" Copper	CK1125	4" Copper	PK44
1 1/4" Plastic	CK115	4" Cast Iron	CP44
1 1/4" Steel	CK115	4" Plastic	P400
1 1/4" Stainless Steel	CS15-125	4" Steel	P400
1 1/2" Copper	CK115	4" Extra Hvy Cast Iron	P400
1 1/2" Cast Iron	CP150	4" Thinwall Plastic	TWP44
1 1/2" Plastic	CP150	<b>5" STEEL TO-</b>	
1 1/2" Steel	CP150	5" Cast Iron	CP55
1 1/2" Bathwaste Tailpiece	T150	5" Plastic	P500
2" Cast Iron	CP215	5" Steel	P500
2" Copper	CK215	5" Extra Hvy Cast Iron	P500
2" Plastic	CP215	<b>6" STEEL TO-</b>	
2" Steel	CP215	6" Cast Iron	CP66
3" Cast Iron	C315	6" Plastic	P600
3" Plastic	P315	6" Steel	P600
3" Steel	P315	6" Extra Hvy Cast Iron	P600
3" Extra Hvy Cast Iron	P315	<b>8" STEEL TO-</b>	
<b>2" STEEL TO-</b>			
1" Plastic	CK2125	8" Cast Iron	CP88
1" Steel	CK2125	8" Plastic	P800
1" Copper (IPS)	CK2125	8" Steel	P800
1 1/4" Copper	CK1125	8" Extra Hvy Cast Iron	P800
1 1/4" Plastic	CK215		

**FOR JOINING STEEL PIPE**