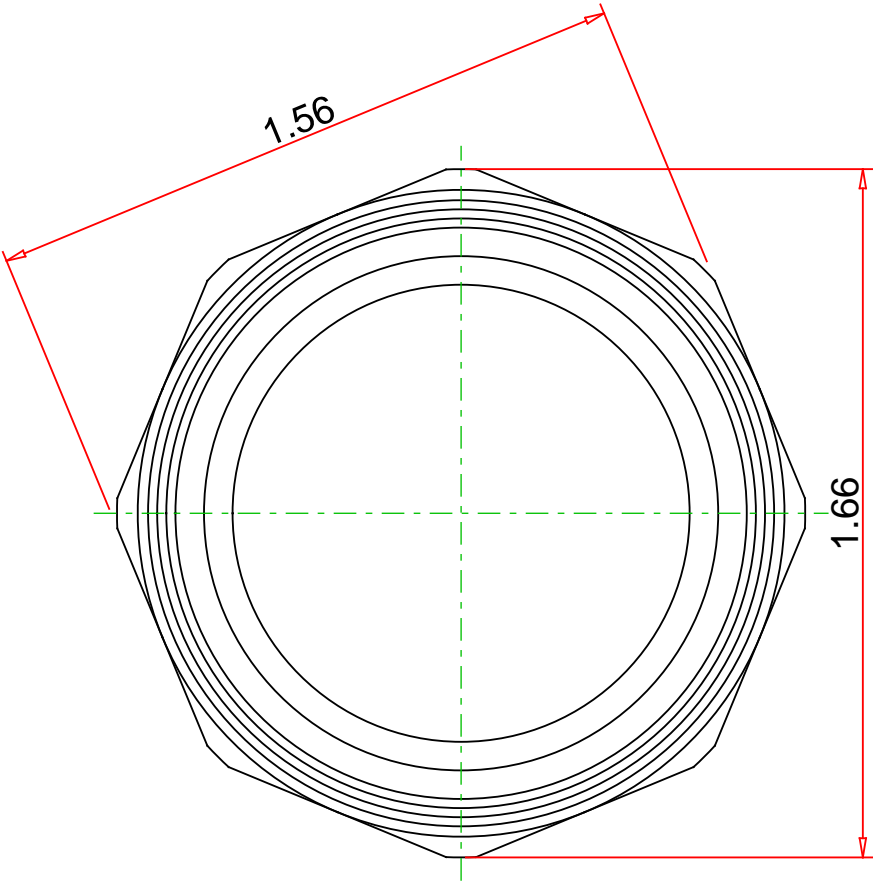
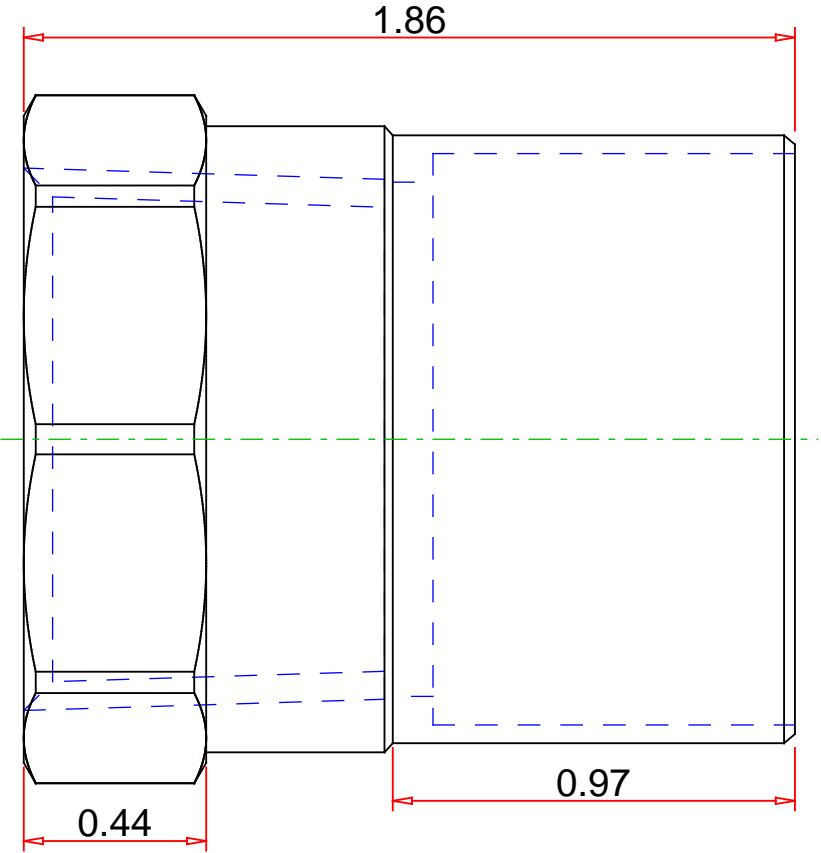


- Approvals & Certifications
- Wrot Copper
 - UNS C12200
 - Conforms to NSF/ANSI 61 Annex G
 - Conforms to ASME B16.22
 - Conforms to ASME B1.20.1



Note : - Drawing not to Scale

DISCLAIMER: DIMENSIONS ARE APPROXIMATE AND ARE SUBJECT TO CHANGE WITHOUT NOTICE. ALL ASME DIMS ARE MINIMUM UNLESS NOTED. LAY LENGTH DIMS ARE ± 0.06 ALL OTHER DIMS ARE NOMINAL. ALL DIMS ARE IN INCHES.

© 6-OCT-2022 Mueller Industries, Inc.

Part No. :

W 01272

Description :

Adapter Female, C x FPT, 1-1/4" x 1"



Mueller Streamline Co.

Address: 150 Schilling Blvd, Suite 201
Collierville, TN 38017
Phone: 901-751-7709
Email: marketing@muellerstreamline.com
Web: <https://www.muellerstreamline.com>