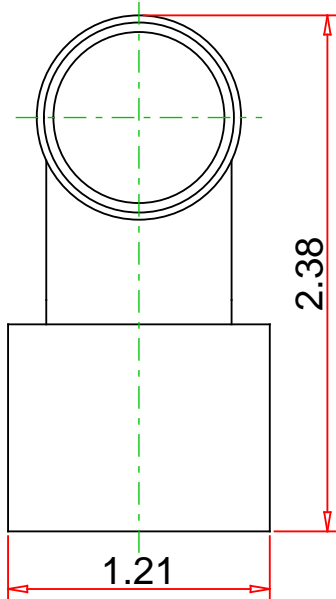
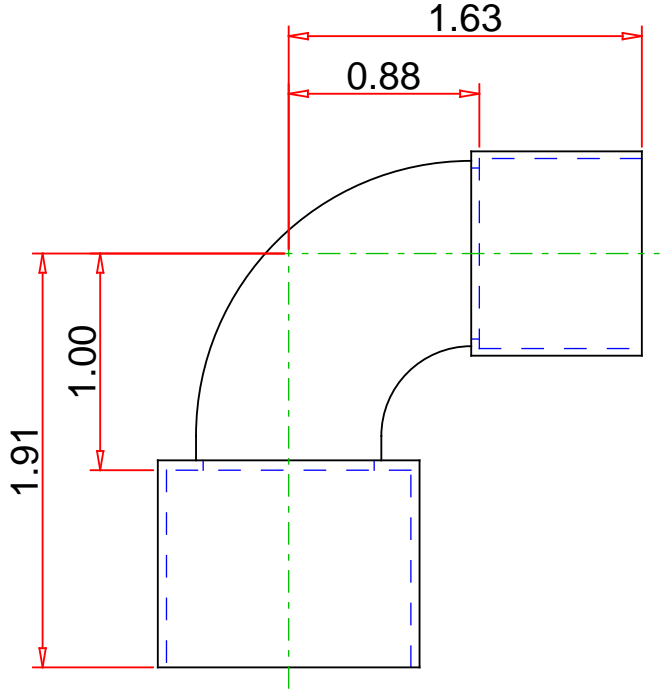
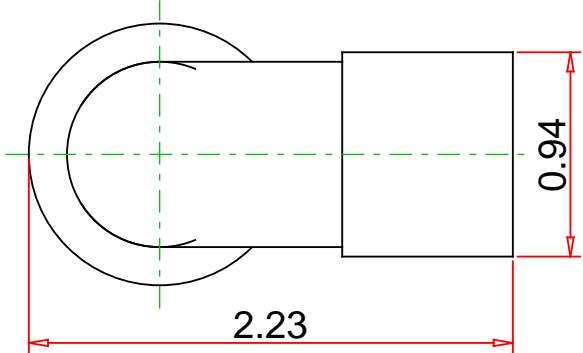


- Approvals & Certifications
- Wrot Copper
 - UNS C12200
 - Conforms to NSF/ANSI 61 Annex G
 - Conforms to ASME B16.22



Note : - Drawing not to Scale

DISCLAIMER: DIMENSIONS ARE APPROXIMATE AND ARE SUBJECT TO CHANGE WITHOUT NOTICE. ALL ASME DIMS ARE MINIMUM UNLESS NOTED. LAY LENGTH DIMS ARE ± 0.06 ALL OTHER DIMS ARE NOMINAL. ALL DIMS ARE IN INCHES.

Part No. :	W 02049
Description :	90° Elbow Short Radius, C x C, 1" x 3/4"



Mueller Streamline Co.

Address: 150 Schilling Blvd, Suite 201
Collierville, TN 38017
Phone: 901-751-7709
Email: marketing@muellerstreamline.com
Web: <https://www.muellerstreamline.com>