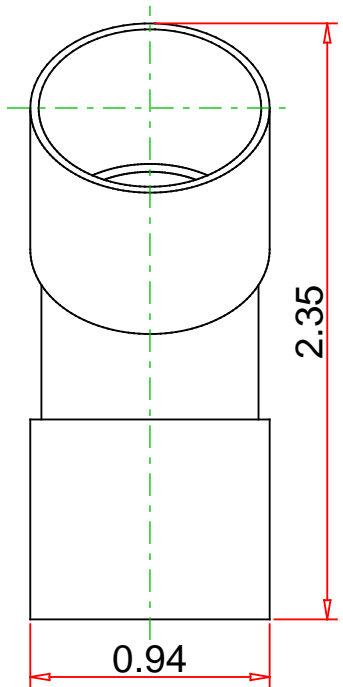
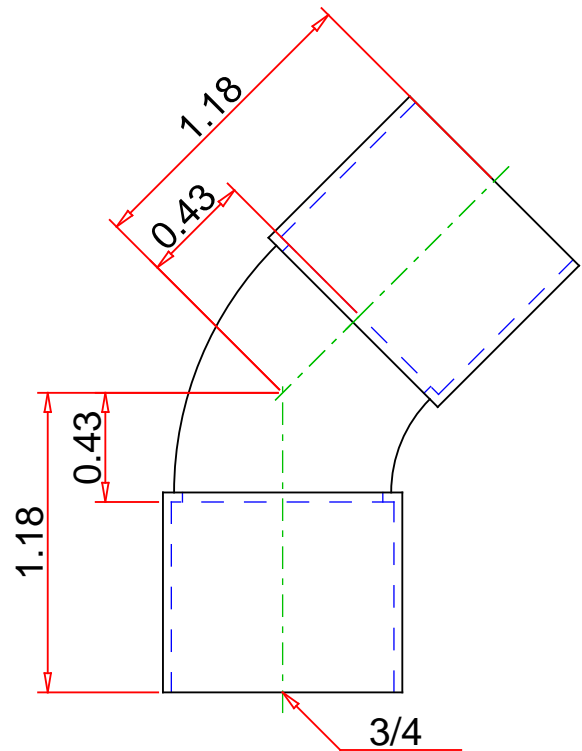
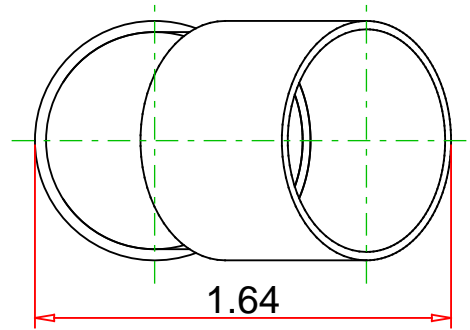


Approvals & Certifications

- Wrot Copper
- UNS C12200
- Conforms to NSF/ANSI 61 Annex G
- Conforms to ASME B16.22



**Note : - Drawing not to Scale**

DISCLAIMER: DIMENSIONS ARE APPROXIMATE AND ARE SUBJECT TO CHANGE WITHOUT NOTICE. ALL ASME DIMS ARE MINIMUM UNLESS NOTED. LAY LENGTH DIMS ARE ± 0.06 ALL OTHER DIMS ARE NOMINAL. ALL DIMS ARE IN INCHES.

© 6-OCT-2022 Mueller Industries, Inc.

**Part No. :**

W 03034

**Description :**

45° Elbow, C x C, 3/4"



**Mueller Streamline Co.**

Address: 150 Schilling Blvd, Suite 201  
Collierville, TN 38017  
Phone: 901-751-7709  
Email: [marketing@muellerstreamline.com](mailto:marketing@muellerstreamline.com)  
Web: <https://www.muellerstreamline.com>