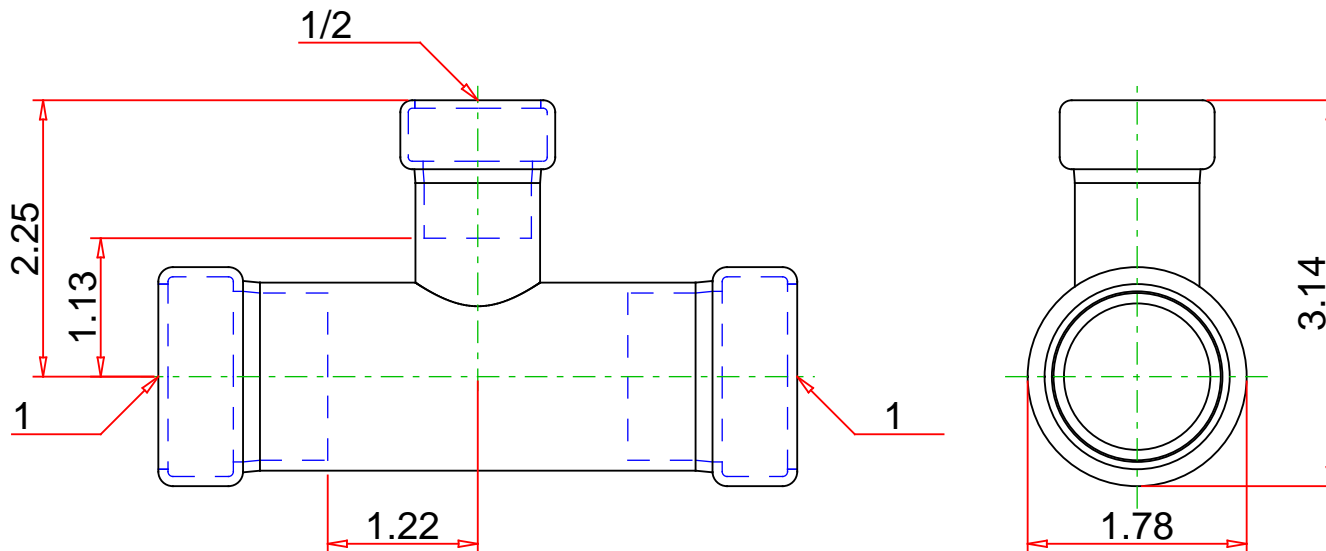


- ASTM A420
- ASME B16.3
- ANSI/CSA LC4a/CSA 6.32a



DISCLAIMER: DIMENSIONS ARE APPROXIMATE AND ARE
SUBJECT TO CHANGE WITHOUT NOTICE. ALL ASME DIMS ARE
MINIMUM UNLESS NOTED. LAY LENGTH DIMS ARE ± 0.06
ALL OTHER DIMS ARE NOMINAL. ALL DIMS ARE IN INCHES.

Carbon Steel Tee Reducing, P x P x P, 1" x 1" x 1/2"



Web: <https://www.muellerstreamline.com>