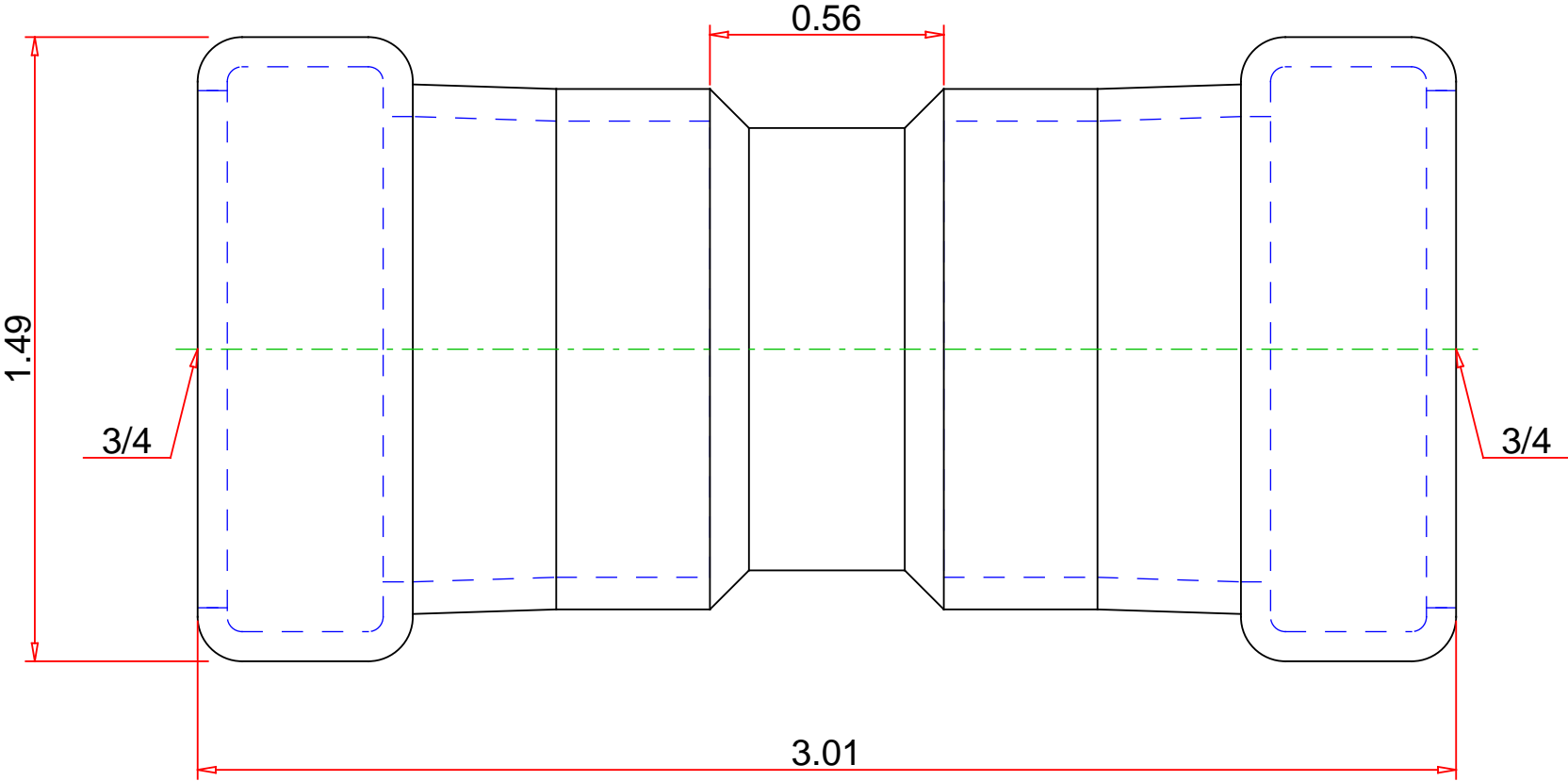


Approvals & Certifications

- ASTM A420
- ASME B16.3
- ANSI/CSA LC4a/CSA 6.32a



**Note : - Drawing not to Scale**

DISCLAIMER: DIMENSIONS ARE APPROXIMATE AND ARE SUBJECT TO CHANGE WITHOUT NOTICE. ALL ASME DIMS ARE MINIMUM UNLESS NOTED. LAY LENGTH DIMS ARE ± 0.06 ALL OTHER DIMS ARE NOMINAL. ALL DIMS ARE IN INCHES.

© 5-APR-2022 Mueller Industries, Inc.

Part No. :	CP10146G
Description :	Carbon Steel Coupling with Stop, P x P, 3/4" x 3/4"



**Mueller Streamline Co.**

Address: 150 Schilling Blvd, Suite 201  
Collierville, TN 38017  
Phone: 901-751-7709  
Email: [marketing@muellerstreamline.com](mailto:marketing@muellerstreamline.com)  
Web: <https://www.muellerstreamline.com>