



3-5 DAY SHIPPING

TANK & LAVATORY

Available finishes are shown below item number



499 LAVATORY DRAIN,
W/OVERFLOW
26 POLISHED CHROME



499-1 LAVATORY DRAIN,
W/OUT OVERFLOW
10B OIL RUBBED BRONZE
15S SATIN NICKEL
26 POLISHED CHROME



3201 LAVATORY DRAIN,
W/OUT OVERFLOW
10B OIL RUBBED BRONZE
15 POLISHED NICKEL
15S SATIN NICKEL
20 STAINLESS STEEL
26 POLISHED CHROME



3203 LAVATORY DRAIN,
POLISHED W/OUT
OVERFLOW
10B OIL RUBBED BRONZE
15S SATIN NICKEL
26 POLISHED CHROME



3211 LAVATORY DRAIN,
W/OUT OVERFLOW
07 ENGLISH BRONZE
10B OIL RUBBED BRONZE
15 POLISHED NICKEL
15A ANTIQUE NICKEL
15S SATIN NICKEL
20 STAINLESS STEEL (PVD)
26 POLISHED CHROME
56 FLAT BLACK



3213 LAVATORY DRAIN,
POLISHED W/OUT
OVERFLOW
10B OIL RUBBED BRONZE
15S SATIN NICKEL
26 POLISHED CHROME



343 SPACER RING
10B OIL RUBBED BRONZE
15S SATIN NICKEL



3251 LAVATORY DRAIN
LIFT ROD EXTENSION



327 LAVATORY DRAIN TAILPIECE
10B OIL RUBBED BRONZE
15 POLISHED NICKEL
15S SATIN NICKEL



328 EXTENSION TUBE
10B OIL RUBBED BRONZE
15 POLISHED NICKEL
15S SATIN NICKEL
26 POLISHED CHROME
56 FLAT BLACK



401 ANGLE VALVE, 1/2" IPS
10B OIL RUBBED BRONZE
15 POLISHED NICKEL
15S SATIN NICKEL



401X ANGLE VALVE
1/2" IPS
15 POLISHED NICKEL
15S SATIN NICKEL
26 POLISHED CHROME



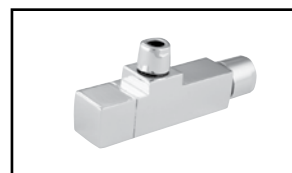
402 ANGLE VALVE,
1/2" COMPRESSION
10B OIL RUBBED BRONZE
15S SATIN NICKEL



403 ANGLE VALVE,
1/2" COMPRESSION
03 POLISHED BRASS COATED
06 ANTIQUE BRASS
07 ENGLISH BRONZE
10 SATIN BRONZE (PVD)
10B OIL RUBBED BRONZE
15 POLISHED NICKEL
15A ANTIQUE NICKEL
15S SATIN NICKEL
20 STAINLESS STEEL (PVD)
26 POLISHED CHROME
56 FLAT BLACK



403-1 ANGLE VALVE,
1/2" COMPRESSION
15S SATIN NICKEL
26 POLISHED CHROME



403-3 ANGLE VALVE,
1/2" COMPRESSION
26 POLISHED CHROME