

American Standard† Flush Valve Disc Without Helmet

- Genuine American Standard – snap-on or screw-on

With Helmet

- Snap-on or screw-on



490-10312



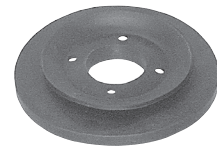
490-10316

Item No	Description	Attachment Method	Pkg	Min Qty	Case Qty
WITHOUT HELMET					
490-10302	A. S. #33643-07	snap-on	B*	1	25
490-10312	A. S. #73383-07	screw-on	B*	1	25
WITH HELMET					
490-10306	Flush valve disc†	snap-on	B	25	25
490-10316	Flush valve disc†	screw-on	B	25	25

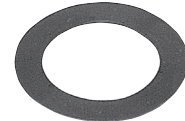
† Indicates the part was not made by original manufacturer, but manufactured to the same specifications as original part.

Mansfield Flush Valve Gasket

- Genuine Mansfield, old and new styles



490-10340



490-10341

Item No	Description	Pkg	Min Qty	Case Qty
490-10340	Mansfield gasket - old style	B*	1	25
490-10341	Mansfield gasket - new style	B*	1	25

Flush Valve Balls For Douglas† and Eljer†



490-10206



490-10211

Item No	Description	Pkg	Min Qty	Case Qty
490-10206	3" replacement flush valve tank ball for Douglas models	B*	1	25
490-10211	Replacement flush valve tank ball for Eljer models	B*	1	50

† Indicates the part was not made by original manufacturer, but manufactured to the same specifications as original part.