

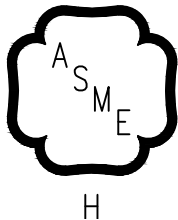
# INSTALLATION, OPERATING AND SERVICE INSTRUCTIONS FOR

## ALPINE™

### CONDENSING HIGH EFFICIENCY DIRECT VENT

### ***GAS - FIRED HOT WATER BOILER***

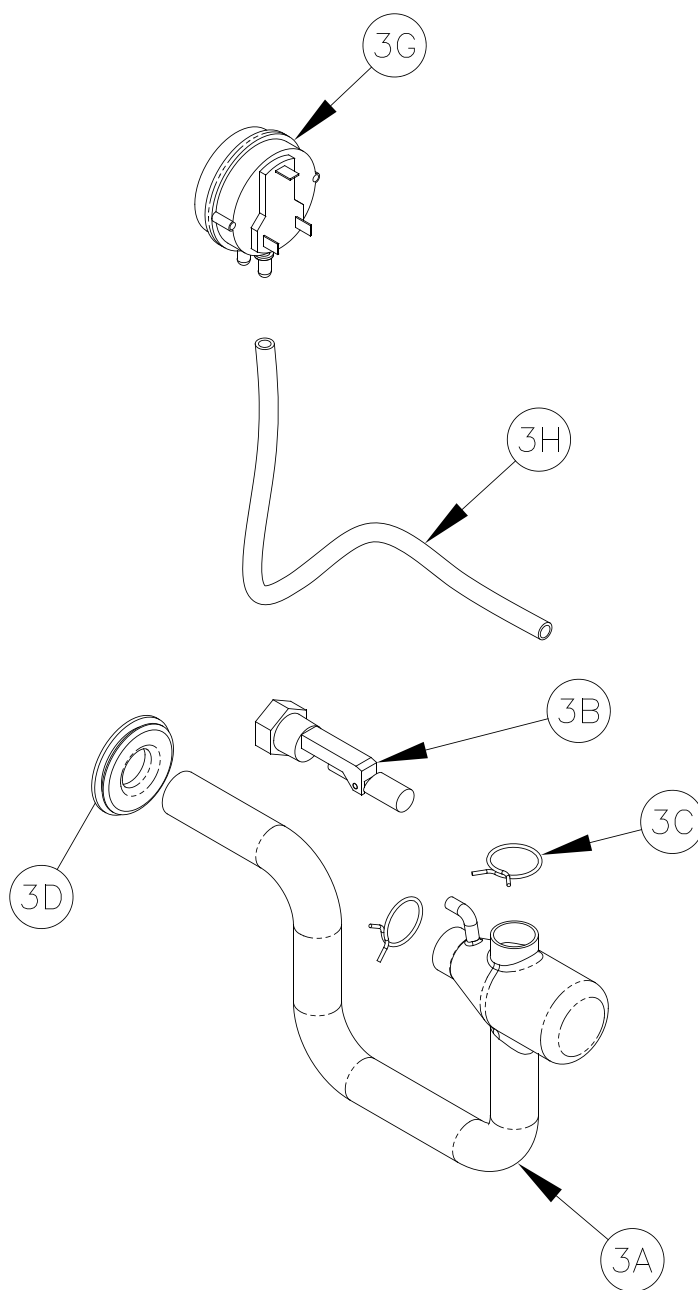
Size Range - 80 MBH through 285 MBH



As an ENERGY STAR® Partner, U.S. Boiler Company has determined that the Alpine™ Series meets the ENERGY STAR® guidelines for energy efficiency established by the United States Environmental Protection Agency (EPA).

**WARNING:** Improper installation, adjustment, alteration, service or maintenance can cause property damage, injury, or loss of life. For assistance or additional information, consult a qualified installer, service agency or the gas supplier. This boiler requires a special venting system. Read these instructions carefully before installing.

### XIII. Repair Parts (continued)



Key No.	Description	Part Number				
		ALP080B	ALP105B	ALP150B	ALP210B	ALP285B
	Repair Condensate Trap and Related Components					
3A	Replacement Condensate Trap Kit	104704-01				
3B	Replacement Condensate Float Switch Kit	105005-01				
3C	Spring Clip, Condensate Trap - (2 per boiler)	101632-01				
3D	Rubber Grommet, Condensate Trap	101595-01				
3G	Air Pressure Switch	104425-01		104426-01		
3H	Air Pressure Switch Tubing, Black	9 in. 7016039				13.5 in. 7016041
N/A	Condensate Neutralizer Kit (Not Shown)	101867-01				
N/A	Limestone Chips (Not Shown)	101873-01				