

Dimensional Document

Viega PureFlow[®] Press Polymer Fittings



This document is subject to updates. For the most current Viega technical literature please visit www.viega.us.

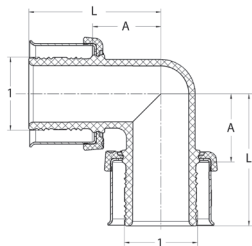


Viega products are designed to be installed by licensed and trained plumbing and mechanical professionals who are familiar with Viega products and their installation. **Installation by non-professionals may void Viega LLC's warranty.**



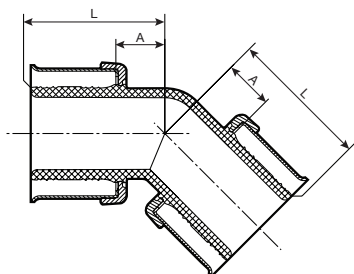
Zero Lead identifies Viega products meeting the lead free requirements of NSF 61-G through testing under NSF/ANSI 372 (0.25% or less maximum weighted average lead content).

PureFlow Press 90° Elbow Polymer - Model V5616

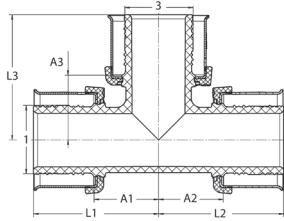


Part No.	Size (in)	A (in)	L (in)
	1		
49210	3/8	0.51	1.11
49220	1/2	0.51	1.11
49240	3/4	0.68	1.27
49260	1	0.77	1.52
49270	1 1/4	0.98	2.08
49280	1 1/2	1.09	2.19
49290	2	1.65	2.72

PureFlow Press 45° Elbow Polymer - Model V5626



Part No.	Size (in)	A (in)	L (in)
	1		
49285	1 1/2	0.66	1.75
49286	2	0.96	2.03

PureFlow Press Tee Polymer - Model V5618


Part No.	Size (in)			A1 (in)	A2 (in)	A3 (in)	L1 (in)	L2 (in)	L3 (in)
	1	2	3						
49200	3/8	3/8	3/8	0.51	0.51	0.51	1.11	1.11	1.11
49322	1/2	3/8	3/8	0.49	0.44	0.54	1.09	1.04	1.13
49332	1/2	1/2	3/8	0.49	0.49	0.54	1.09	1.09	1.13
49520	1/2	1/2	1/2	0.51	0.51	0.51	1.11	1.11	1.11
49334	1/2	1/2	3/4	0.67	0.67	0.60	1.26	1.26	1.19
49433	3/4	1/2	1/2	0.59	0.49	0.69	1.18	1.09	1.28
49443	3/4	3/4	1/2	0.59	0.59	0.69	1.18	1.18	1.28
49434	3/4	1/2	3/4	0.71	0.71	0.71	1.30	1.30	1.30
49540	3/4	3/4	3/4	0.71	0.71	0.71	1.30	1.30	1.30
49533	1	1/2	1/2	0.59	0.49	0.74	1.34	1.09	1.34
49543	1	3/4	1/2	0.60	0.59	0.74	1.35	1.18	1.34
49544	1	3/4	3/4	0.71	0.65	0.85	1.47	1.25	1.44
49535	1	1/2	1	0.81	0.79	0.81	1.56	1.36	1.56
49545	1	3/4	1	0.84	0.77	0.84	1.59	1.37	1.59
49553	1	1	1/2	0.58	0.58	0.74	1.34	1.34	1.34
49554	1	1	3/4	0.71	0.71	0.84	1.47	1.47	1.44
49560	1	1	1	0.71	0.71	0.71	1.47	1.47	1.47
49754	1 1/4	1	3/4	0.73	0.67	0.93	1.82	1.42	1.53
49755	1 1/4	1	1	0.84	0.78	0.91	1.94	1.53	1.66
49774	1 1/4	1 1/4	3/4	0.73	0.73	0.93	1.82	1.82	1.53
49775	1 1/4	1 1/4	1	0.84	0.84	0.91	1.94	1.94	1.66
49570	1 1/4	1 1/4	1 1/4	0.98	0.98	0.98	2.07	2.07	2.07
49854	1 1/2	1	3/4	0.72	0.79	1.03	1.82	1.54	1.63
49855	1 1/2	1	1	0.85	0.91	1.03	1.94	1.67	1.78
49874	1 1/2	1 1/4	3/4	0.77	0.77	1.04	1.82	1.82	1.63
49875	1 1/2	1 1/4	1	0.90	0.90	1.06	1.94	1.94	1.79
49877	1 1/2	1 1/4	1 1/4	1.02	1.02	1.11	2.06	2.06	2.16
49883	1 1/2	1 1/2	1/2	0.72	0.72	1.03	1.81	1.81	1.60
49884	1 1/2	1 1/2	3/4	0.72	0.72	1.03	1.82	1.82	1.60
49885	1 1/2	1 1/2	1	0.85	0.85	1.04	1.94	1.94	1.78
49887	1 1/2	1 1/2	1 1/4	0.97	0.97	1.07	2.06	2.06	2.15
49580	1 1/2	1 1/2	1 1/2	1.09	1.09	1.09	2.18	2.18	2.18
49984	2	1 1/2	3/4	1.07	1.10	1.42	2.14	2.15	1.99
49985	2	1 1/2	1	1.07	1.10	1.41	2.14	2.15	2.15
49987	2	1 1/2	1 1/4	1.25	1.10	1.50	2.33	2.15	2.50
49988	2	1 1/2	1 1/2	1.25	1.21	1.46	2.33	2.26	2.50
49993	2	2	1/2	0.98	0.98	1.46	2.06	2.06	2.05
49994	2	2	3/4	0.98	0.98	1.50	2.06	2.06	2.05
49995	2	2	1	1.10	1.10	1.53	2.17	2.17	2.26
49997	2	2	1 1/4	1.25	1.25	1.50	2.33	2.33	2.54
49998	2	2	1 1/2	1.37	1.37	1.46	2.45	2.45	2.50
49590	2	2	2	1.65	1.65	1.65	2.72	2.72	2.72