

Tech Data Sheet

ProPress 316 3-Piece Ball Valve Model 4370.8



Description

The ProPress 316 3-piece ball valve is equipped with a full port, 316 stainless steel 3-piece body. The ball valve features FKM

sealing elements, PTFE stem seals, lockable metal handle and Viega's Smart Connect® technology for easy identification of unpressed connections during pressure testing.

Features

- 316 stainless steel ball
- Blowout-proof 316 stainless steel stem
- 304 stainless steel locking handle
- Adjustable packing nut
- Reinforced PTFE seats
- Smart Connect technology
- ISO 5211 mounting pad

Ratings

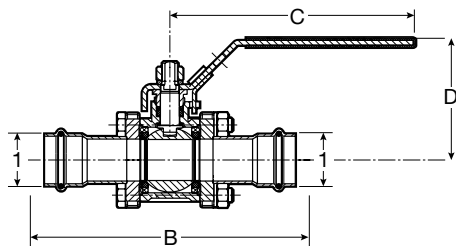
- 250 CWP
- Max. operating pressure: 200 psi
- Temperature range: 14°F to 250°F

Approvals

- Conforms to MSS SP-110

| Valve Size (in) | Valve Body Bolt & Nut Size | | Bolt Torque +/- 5 | | Valve Stem Nut Size (mm) | Stem Nut | |
|-----------------|----------------------------|-----|-------------------|------|--------------------------|----------|------|
| | | | ft/lbs | (Nm) | | ft/lbs | (Nm) |
| 1/2 | M8 x 45 | M8 | 7.5 | (10) | AF 16 | 7.5 | 10 |
| 3/4 | M8 x 56 | M8 | 7.5 | (10) | AF 18 | 7.5 | 10 |
| 1 | M8 x 65 | M8 | 15 | (20) | AF 21 | 11 | 15 |
| 1 1/4 | M10 x 75 | M10 | 15 | (20) | AF 22 | 11 | 15 |
| 1 1/2 | M10 x 90 | M10 | 22.5 | (30) | AF 24 | 18.5 | 25 |
| 2 | M10 x 100 | M10 | 22.5 | (30) | AF 24 | 18.5 | 25 |

Viega ProPress 316 3-Piece Ball Valve Stainless Steel P x P - Model 4370.8



| Part No. | Size (in) | B (in) | C (in) | D (in) |
|----------------|-----------|--------|--------|--------|
| S/S 316 | 1 | | | |
| 85132 | 1/2 | 5.41 | 3.99 | 2.28 |
| 85133 | 3/4 | 5.79 | 5.88 | 2.85 |
| 85134 | 1 | 6.00 | 5.88 | 2.93 |
| 85136 | 1 1/4 | 6.61 | 7.54 | 3.27 |
| 85137 | 1 1/2 | 7.26 | 7.54 | 3.57 |
| 85138 | 2 | 9.67 | 7.54 | 3.89 |

Bronze Ball Valve - P x P - Model 2973



| Part No. | Size (in) |
|----------|-----------|
| 24000 | 1/2 |
| 24005 | 3/4 |
| 24010 | 1 |
| 24015 | 1 1/4 |
| 24020 | 1 1/2 |
| 24025 | 2 |

- Smart Connect technology
- 250 CWP
- Body: Brass Body with Bronze Connections
- Ball: Full Port Chrome Plated Brass
- Stem: Blowout-Proof Brass
- Sealing Element: EPDM
- Listings: U.P. Code, IAPMO/ANSI Z1157
- Conforms to: MSS SP-110
- Parameters: 250 psi Maximum Working Pressure
0° - 200°F Operating Temperature

Bronze Ball Valve - P x FPT Model 2973.1



| Part No. | Size (in) |
|----------|-----------|
| 24030 | 1/2 |
| 24035 | 3/4 |
| 24040 | 1 |

- Smart Connect technology
- 250 CWP
- Body: Brass Body with Bronze Connections
- Ball: Full Port Chrome Plated Brass
- Stem: Blowout-Proof Brass
- Sealing Element: EPDM
- Listings: U.P. Code, IAPMO/ANSI Z1157
- Conforms to: MSS SP-110
- Parameters: 250 psi Maximum Working Pressure
0° - 200°F Operating Temperature

Bronze Ball Valve - P x Hose Model 2973.3



| Part No. | Size (in) |
|----------|-----------|
| 24090 | 1/2 |
| 24095 | 3/4 |

- Smart Connect technology
- 250 CWP
- Body: Brass Body with Bronze Connections
- Ball: Full Port Chrome Plated Brass
- Stem: Blowout-Proof Brass
- Sealing Element: EPDM
- Listings: U.P. Code, IAPMO/ANSI Z1157
- Conforms to: MSS SP-110
- Parameters: 250 psi Maximum Working Pressure
0° - 200°F Operating Temperature

316 Stainless Steel Three Piece Ball Valve P x P - Model 4370.8



| Part No. | Size (in) |
|----------|-----------|
| 85132 | 1/2 |
| 85133 | 3/4 |
| 85134 | 1 |
| 85136 | 1 1/4 |
| 85137 | 1 1/2 |
| 85138 | 2 |

- Smart Connect technology
- Body: Three Piece 316 Stainless Steel
- Ball: 316 Stainless Steel Fullport
- Stem: Blow-out Proof 316 Stainless Steel
- Sealing Element: FKM
- Conforms to: MSS SP-110
- Parameters: 200 psi Maximum Working Pressure
0° - 250° Operating Temperature

316 Stainless Steel Ball Valve - P x P Model 4070



| Part No. | Size (in) |
|----------|-----------|
| 81080 | 1/2 |
| 81085 | 3/4 |
| 81090 | 1 |
| 81095 | 1 1/4 |
| 81100 | 1 1/2 |
| 81105 | 2 |

- Smart Connect technology
- Body: 316 Stainless Steel
- Ball: 316 Stainless Steel Fullport
- Stem: Blow-out Proof 316 Stainless Steel
- Sealing Element: EPDM
- Listings: NSF-61-372
- Conforms to: MSS SP-110
- Parameters: 200 psi Maximum Working Pressure
0° - 250°F Operating Temperature

Automatic Recirculation Regulating Valve Zero Lead - Model 2981.3ZL



| Part No. | Size (in) |
|----------|-----------|
| 79901 | 1 x 1 |

- Automatic, thermostatic balancing
- Zero lead body
- Integrated isolation (ball) valve
- Adjustable temperature setpoint
- 1" BSP male threads
- NSF-61-372