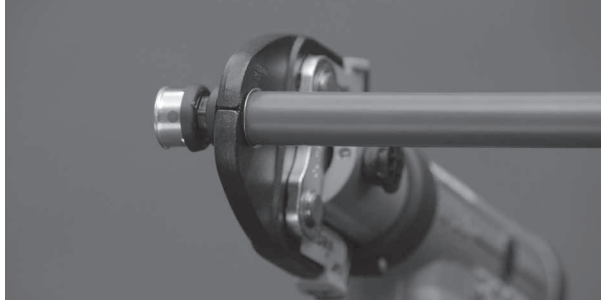


Product Instructions

Viega PureFlow Press Fittings

EN Product Instructions Viega PureFlow Press Fittings

This document is subject to updates. For the most current Viega technical literature please visit www.viega.us.

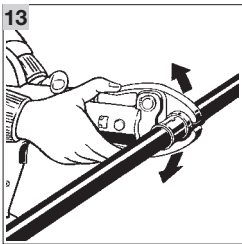
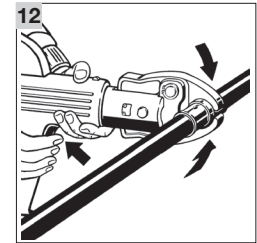
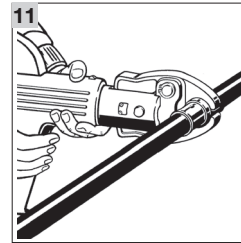
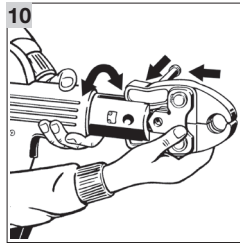
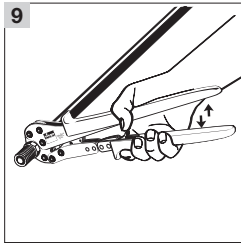
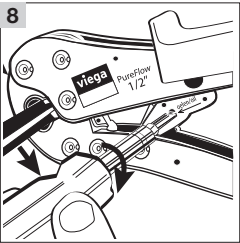
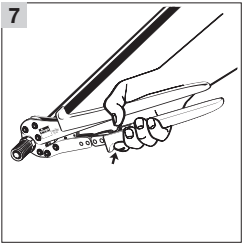
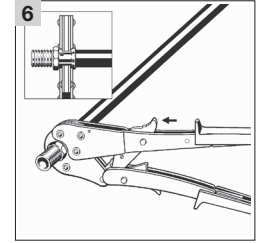
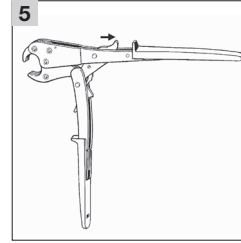
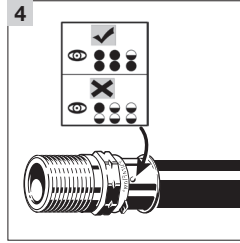
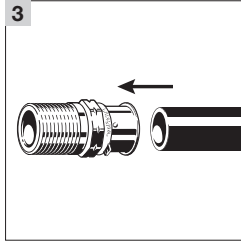
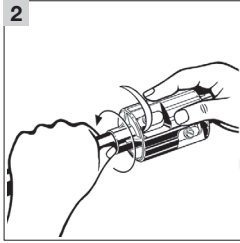
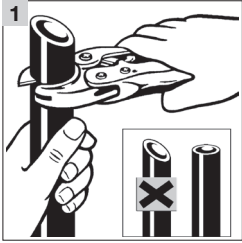


viega

Viega LLC
585 Interlocken Blvd.
Broomfield, CO 80021

Phone (800) 976-9819
www.viega.us

PI-PF 530530 0919 PureFlow Press Fittings (EN)



- For the 1" tool, open the tool handles fully (thumb grip is available to maintain open jaw). Then close tool jaws to engage ratchet (ensure that thumb grip is returned fully forward before closing jaws).
- Position the PureFlow press tool perpendicular over the press sleeve, resting it against the tool locator ring. For 1" tool, close tool jaws to engage ratchet (ensure that thumb grip is returned fully forward before closing jaws). Make sure the PureFlow press tool is properly aligned (see step 8 if it is not).

- Extend the PureFlow press tool handle and continue ratcheting until automatic tool release occurs at the proper compression force.

CAUTION!
Do not press twice.

- Insert the appropriate PureFlow press jaw into the press tool and push in the holding pin until it locks.
- Open jaw and position perpendicular over press sleeve, resting it against the tool locator ring.

i The tool locator ring must be in the factory-installed position while making a press to ensure a consistent leak-proof connection. It may be necessary to rotate the tool locator ring to avoid interference between the ring and tool.

- Start the pressing process; hold the trigger until the jaw has automatically released.
- When press connection is complete, open and remove the jaw.

WARNING!
The tool locator ring must be present to ensure a proper PureFlow Press connection.

CAUTION!
Do not press twice.

EN

Viega PureFlow Press Fittings

! Viega products are designed to be installed by licensed and trained plumbing and mechanical professionals who are familiar with Viega products and their installation. **Installation by non-professionals may void Viega LLC's warranty.**

- Square off tubing to proper length. Uneven, jagged, or irregular cuts will produce unsatisfactory connections.
- If using FostaPEX tubing, insert into prep tool, push and turn until no resistance is felt. If using Viega PureFlow PEX, continue to Step 3.
- Insert PureFlow Press fitting with attached sleeve into tubing and engage fully.
- Ensure full tubing insertion at view holes in attached press sleeve. Full insertion means tubing must be completely visible in at least two view holes and partially visible in the one.

i The tool locator ring must be in the factory-installed position while making a press to ensure a consistent leak-proof connection. It may be necessary to rotate the tool locator ring to avoid interference between the ring and tool.

- Close handles, using trigger to reduce grip span if desired.
- If the PureFlow press tool is not properly aligned with the locator ring, use the emergency release (using a screw driver to turn the emergency release) to open the press tool. Once released, align the PureFlow press tool properly and go back to step 6.

WARNING!
The connection is not leak-proof when the tool has been opened by emergency release. The tool locator ring must be present to ensure a proper PureFlow Press connection.

i If using hand tools continue with steps 5 to 9. If using power tools skip to steps 10 to 13.