



Installation Instructions

InnoFlue® Polypropylene Vent Systems

ICCT3503 - Concentric Reversible Adaptor

Connect from InnoFlue 3"/5" concentric vent to InnoFlue 3" single wall or connect InnoFlue 3" single wall to InnoFlue 3"/5" concentric venting.

Centrotherm

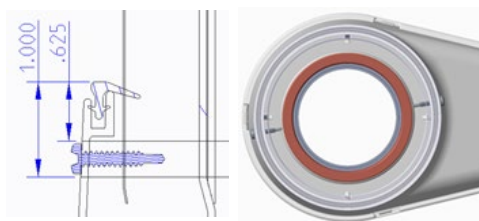
ICCT3503 - Twin Pipe to Concentric Instructions



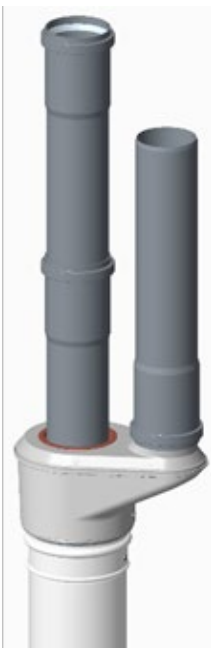
Note: use Centrocerin lubricant at each connecting point

Twin Pipe to Concentric Configuration

1. Insert the adaptor's twin pipe males to the intake and exhaust of run.
2. Insert mating concentric part to ICCT3503 adaptor and fasten with the 0.875" length screws provided at 0.625" to 1.000" from the top of the gasket. The screws should be just offset from the internal ribs and opposite of each other. (See pictures below)



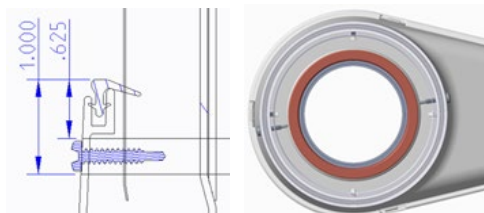
ICCT3503 - Concentric to Twin Pipe Instructions



Note: use Centrocerin lubricant at each connecting point

Concentric to Twin Pipe Configuration

1. Insert the included 5" diameter male (US00000104) into the ICCT3503 adaptor and fasten with the 0.875" length screws provided at 0.625" to 1.000" from the top of the gasket. The screws should be just offset from the internal ribs and opposite of each other. (See pictures at right)



2. Insert ICCT3503 adaptor to InnoFlue® Concentric vent (ICVL35) and fasten with the 0.5" length screws provided with Concentric vent.

3. Insert vent length in the socket of the exhaust side of the adaptor and reverse on the male connection of the intake side of adaptor. Then complete run.