

## Diagrams for Model ASU18RLF

**Model Information:** [ASU18RLF](#) Wall Mounted 18,000 BTU, Mix & Match HFI Indoor

A complete list of parts used in this diagram is listed below.

Picture	Type#	Description	Recommended Maintenance	Part#
	UTR-FA13-1	APPLE CATECHIN 2-pk	Every 3 months	<b>A</b>
	UTR-FA13-2	ION DEODORANT FILTER 2-pk	Every 3 years	<b>B</b>
	UTR-FA13-1 & UTR-FA13-2	AIR FILTER KIT (with frames) 1pc Apple Catechin 1 pc Ion Deodorant Filter		<b>C</b>

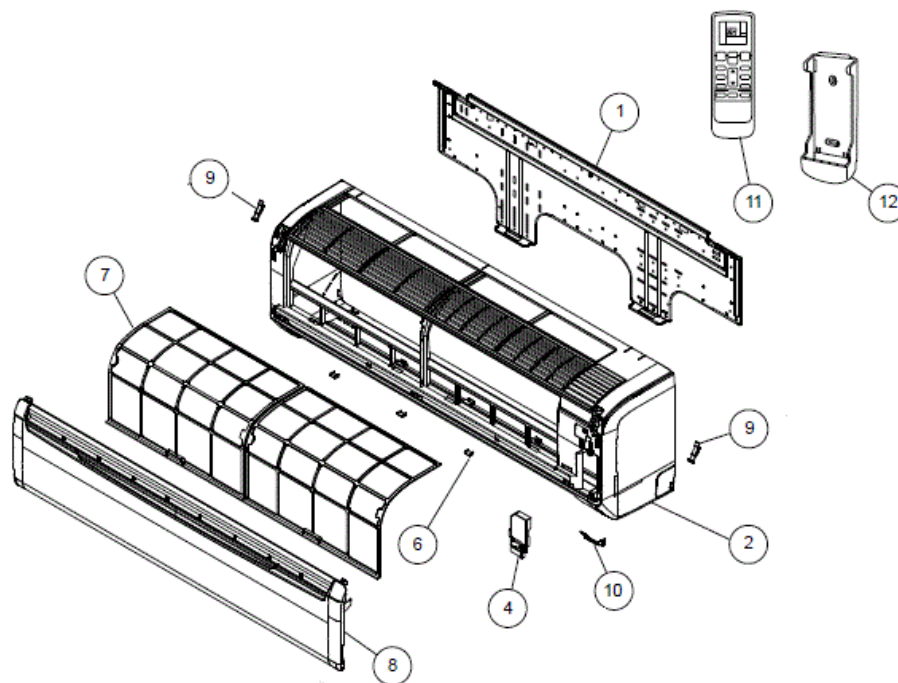
Listed below are parts available for ASU18RLF. To purchase a part enter the desired quantity on the parts line. Once you have selected parts to purchase, click the Submit button located at the bottom of the list.

In-Stock Rating					
Item #	Part #	Price	East Coast	West Coast	Description
A	K9315361011	\$18.43	Low	Good	APPLE CATECHIN FILTER RAC+ UTR-FA13-1 (2 PCS)
B	K9315361028	\$18.43	Good	Good	ION DEODORANT FILTER UTR-FA13-2 (2 PCS)
C	K9315212016	\$18.43	Good	Good	AIR FILTER KIT W/FRAME HVAB# UTR-FA13-1 & UTR-FA13-2
<input type="button" value="SUBMIT"/>					

## Diagrams for Model ASU18RLF

**Model Information:** [ASU18RLF](#) Wall Mounted 18,000 BTU, Mix & Match HFI Indoor

A complete list of parts used in this diagram is listed below.



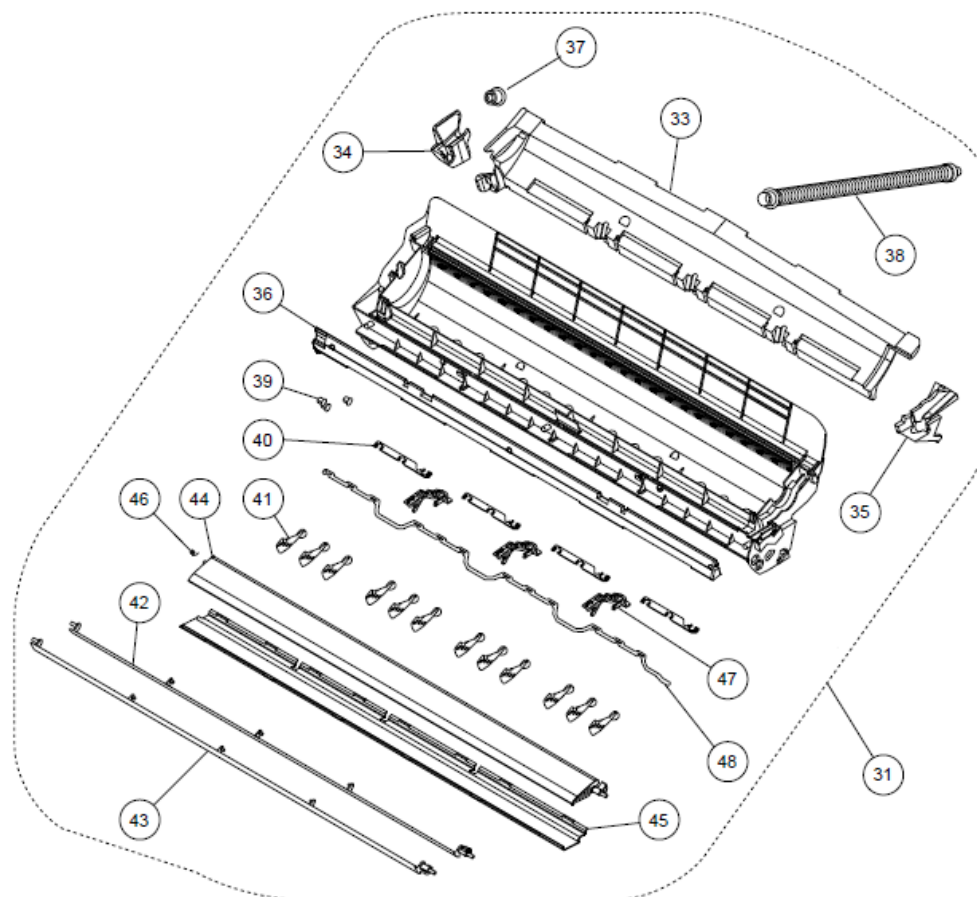
Listed below are parts available for ASU18RLF. To purchase a part enter the desired quantity on the parts line. Once you have selected parts to purchase, click the Submit button located at the bottom of the list.

Item #	Part #	Price	In-Stock Rating		Description
			East Coast	West Coast	
1	K9315023018	\$8.58	Good	Good	BRACKET WALL DW HVAB# SECC-CF-X 20/20 T0.7
10	K9315010018	\$1.00	Not in Stock	Low	RECEIVER IR WINDOW HVAB# PMMA-ABS
11	K9379219013	\$57.30	Good	Good	REMOTE CONTROL RLXS HFI# AR-RAH2U BLANK
12	K9305642045	\$4.22	Not in Stock	Good	HOLDER REMOTE # PLASTIC LIGHT
2	K9314991080	\$55.61	Good	Low	FRONT PANEL DW HFI HIPS 03N11(OPE/TIM/ECO)
4	K9315015013	\$1.90	Not in Stock	Not in Stock	WIRE CLAMPER RAC+ HFI# ELECTRICAL COVER IVORY
6	K9309002050	\$1.51	Good	Low	COVER SCREW RAC ASUB18 HVII# HIPS (03N11) PLASTIC
7	K9315014023	\$8.10	Not in Stock	Good	AIR FILTER ASUB18+ HVII PP
8	K9315336026	\$35.15	Low	Good	INTAKE GRILL HFI DW FRONT FUJITSU
9	K9306755010	\$1.90	Good	Good	CLAMP INTAKE GRILLE ASU*# HVAB POM
A	K9315212016	\$18.43	Good	Good	AIR FILTER KIT W/FAME HVAB# UTR-FA13-1 & UTR-FA13-2
B	K9315252012	\$1.81	Not in Stock	Low	HOLDER THERMISTOR RAC
C	K9315361028	\$18.43	Good	Good	ION DEODORANT FILTER UTR-FA13-2 (2 PCS)
D	K9315361011	\$18.43	Low	Good	APPLE CATECHIN FILTER RAC+ UTR-FA13-1 (2 PCS)
SUBMIT					

## Diagrams for Model ASU18RLF

**Model Information:** [ASU18RLF](#) Wall Mounted 18,000 BTU, Mix & Match HFI Indoor

A complete list of parts used in this diagram is listed below.



Listed below are parts available for ASU18RLF. To purchase a part enter the desired quantity on the parts line. Once you have selected parts to purchase, click the Submit button located at the bottom of the list.

In-Stock Rating					
Item #	Part #	Price	East Coast	West Coast	Description
31	K9315331045	\$51.71	Good	Good	CASING TA HY DW W/FAN GUARD
33	K9315016010	\$1.79	Not in Stock	Low	COVER CASING B DW ASUB18+ HVII EPS
34	K9315017017	\$1.00	Not in Stock	Not in Stock	COVER CASING L ASUB18~24 HVII# EPS STYROFOAM
35	K9315018014	\$1.00	Low	Not in Stock	COVER CASING R ASUB18~24 HVII# STYROFOAM
36	K9315019011	\$1.04	Low	Not in Stock	COVER CASING F ASUB18~24 HVII# STYROFOAM EPS
37	K9367677009	\$1.00	Low	Fair	DRAIN CAP RAC HFI HVAB # RUBBER
38	K9367695003	\$3.67	Good	Not in Stock	HOSE DRAIN HFI ASUB HVII PVC
39	K9312156016	\$1.00	Not in Stock	Low	BUSHING-B RAC+RLXS HVII # POM
40	K9312441013	\$1.00	Not in Stock	Low	SPACER B HVII# ABS
41	K9311997016	\$1.00	Not in Stock	Good	LOUVER R+L RACi+ HVAB PP
42	K9315000019	\$2.67	Not in Stock	Fair	LOUVER U RAC+ AS18~24 HVII# ABS WIDE TOP LOUVER
43	K9315001016	\$3.67	Fair	Not in Stock	LOUVER Z AS18~24 HVII# ABS THINNER LOWER LOUVER
44	K9315002013	\$3.04	Not in Stock	Good	DIFFUSER U RLX ASUB18~24 HVII ABS
45	K9315003010	\$3.07	Not in Stock	Low	DIFFUSER Z RLX ASUB18~24 HVII# ABS
46	K9314142017	\$1.00	Not in Stock	Not in Stock	SPRING C HVII# DIFFUSER SUS304-WPB
47	K9315009012	\$1.54	Not in Stock	Low	PILLER A ASUB18~24 HVII# WSL POM
48	K9315006011	\$1.00	Not in Stock	Low	JOINT B RLXF# ASU** HVAB PLASTIC GRAY
A	K9305751051	\$1.00	Not in Stock	Not in Stock	GUARD FAN RLXS/RLF HVII L=796

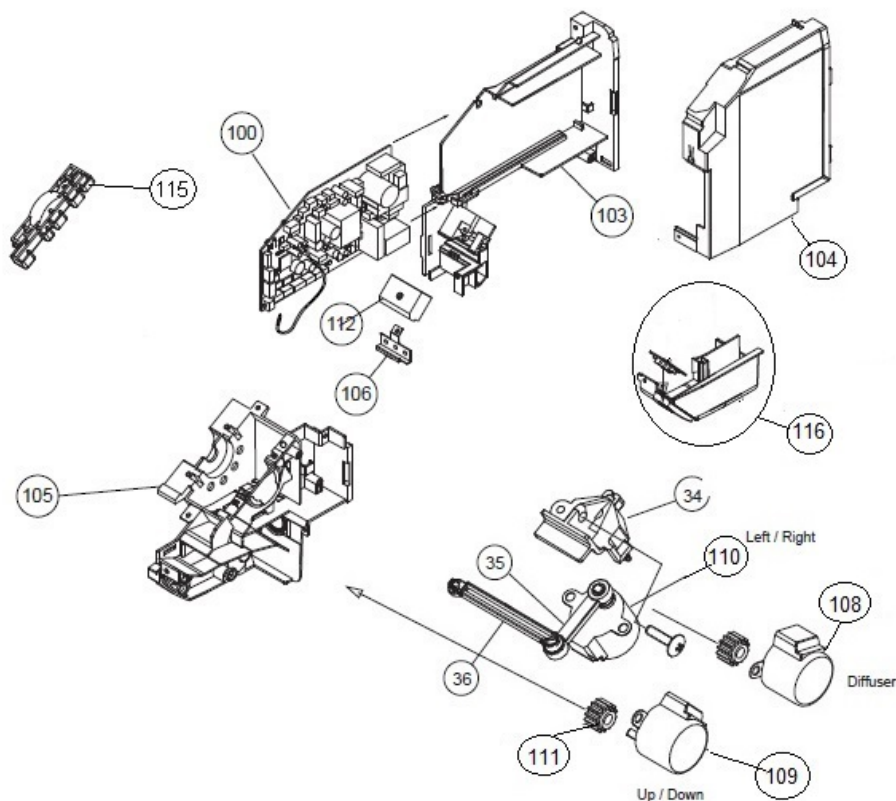
Diagrams for Model ASU18RLF

B	K9315814012	\$1.00	Good	Good	HOLDER FAN GUARD R HFI HVII# ABS
C	K9315815019	\$1.00	Good	Good	HOLDER FAN GUARD L HFI HVII# ABS
					<div>SUBMIT</div>

## Diagrams for Model ASU18RLF

**Model Information:** [ASU18RLF](#) Wall Mounted 18,000 BTU, Mix & Match HFI Indoor

A complete list of parts used in this diagram is listed below.



Listed below are parts available for ASU18RLF. To purchase a part enter the desired quantity on the parts line. Once you have selected parts to purchase, click the Submit button located at the bottom of the list.

Item #	Part #	Price	In-Stock Rating		Description
			East Coast	West Coast	
100	K9708540368	\$74.33	Good	Good	CONTROLLER PCB W/RM 18RLF HY K09DR-1403HSE-C1
103	K9314996023	\$4.30	Not in Stock	Low	BOX CONTROL RAC+RLF# PLASTIC GRAY
104	K9314997020	\$3.74	Not in Stock	Fair	COVER CONTROL RLXB/CLX1# PLASTIC GRAY EZ-005CWSE-C
105	K9314998027	\$4.76	Not in Stock	Not in Stock	CASE MOTOR RAC+RLX*# PLASTIC GRAY
106	K9315028013	\$1.00	Low	Not in Stock	TERMINAL PLATE (ETH) #WSL SGCC-Z-CF-X Z18 T1.0
108	K9900384029	\$4.40	Good	Good	MOTOR STEP DIFFUSER HVAB# 24BYJ48-660 LEIL300 NDFEB RED
109	K9900384036	\$4.40	Good	Good	MOTOR STEP UP/DOWN HVAB# 24BYJ48-661 DC12V4W GREEN
110	K9900139063	\$4.12	Good	Good	MOTOR STEP L/R HVAB# 20BYJ46-166 250 12VDC BLUE
111	K9309994003	\$1.23	Good	Good	GEAR A HVAB# POM
112	K9900447014	\$5.01	Not in Stock	Not in Stock	TERMINAL W/TH FUSE # HP-T3064A-A29-L1 W/RBW WIRE
115	K9315012012	\$1.36	Low	Not in Stock	CLAMP MOTOR RAC-RLF# HVR2 IVORY PLASTIC TAINETU ASB
116	K9707209051	\$30.74	Good	Good	DISPLAY PCB + HOLDER RLXS# K05CY-0902HSE-D0 + HOLDER
34	K9315007018	\$2.09	Not in Stock	Good	LINK HOLDER RACi* ABS

## Diagrams for Model ASU18RLF

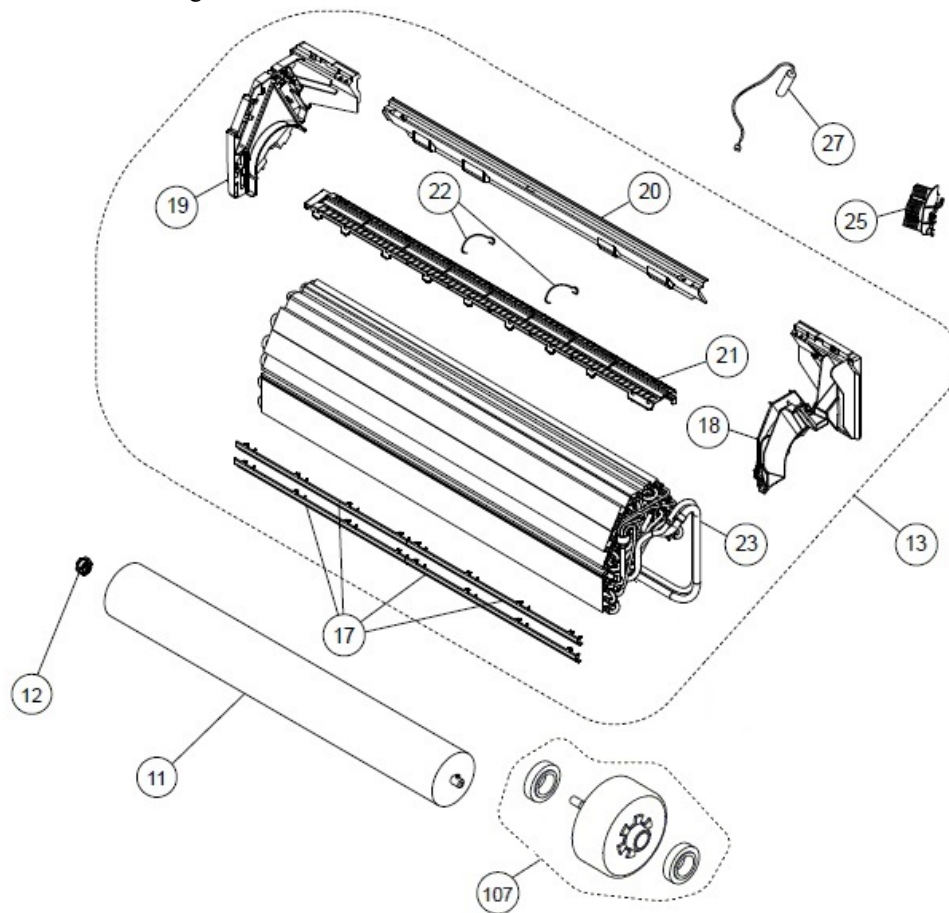
35	K9315008015	\$1.27	Not in Stock	Not in Stock	LINK A HY# POM
36	K9315005014	\$1.51	Low	Low	JOINT A HY**# ABS PLASTIC BLACK
A	K0600470012	\$2.11	Not in Stock	Good	FUSE AOHFI 3.15A 250V N5F013 HTR
B	K0400056164	\$4.40	Not in Stock	Not in Stock	EMI FILTER HFI+ $\phi$ ZCAT2035-0930A *623
<div>SUBMIT</div>					



## Diagrams for Model ASU18RLF

**Model Information:** [ASU18RLF](#) Wall Mounted 18,000 BTU, Mix & Match HFI Indoor

A complete list of parts used in this diagram is listed below.



Listed below are parts available for ASU18RLF. To purchase a part enter the desired quantity on the parts line. Once you have selected parts to purchase, click the Submit button located at the bottom of the list.

Item #	Part #	Price	In-Stock Rating		Description
			East Coast	West Coast	
107	K9602784004	\$48.31	Good	Good	MOTOR DC BRUSHLESS HVAB # MFD-50RON 8P 42W DC340V
11	K9315024015	\$20.81	Good	Good	CROSSFLOW FAN HVAB# DW ASG L=873 D=107
12	K9306628017	\$4.31	Good	Good	HOLDER-C SHAFT ASU** #HVAB RUBBER
13	K9315338181	\$202.87	Good	Good	EVAPORATOR TA RLF/RLB DW HYWSL W512 47x10x13 OFC
17	K9315251015	\$1.71	Not in Stock	Not in Stock	WATER SEAL RACi HVII# ABS
18	K9314994012	\$3.54	Not in Stock	Fair	HOLDER RIGHT EVAP. RL** HY
19	K9314995019	\$3.54	Low	Not in Stock	HOLDER LEFT EVAP HVII# ABS
20	K9315022011	\$3.19	Not in Stock	Not in Stock	REAR BRACKET DW HVII# METAL SGCC-Z-CF-XZ22 T0.6
21	K9315013019	\$2.45	Low	Not in Stock	FILTER GUIDE HVII# WSL ABS BLACK
22	K9315411013	\$1.00	Low	Not in Stock	FILTER GUARD HFI ASUB HVII # SUS304-WPB
23	K9315355041	\$18.54	Not in Stock	Low	JOINT PIPE W/INS AS18RLF/B#
25	K9315252012	\$1.81	Not in Stock	Low	HOLDER THERMISTOR RAC
27	K9900551018	\$2.47	Good	Good	THERMISTOR PIPE RAC+XLS # EP6H503AR-09S004 PLUG IN
A	K9315354020	\$21.65	Not in Stock	Not in Stock	CONNECTION PIPE ASSY ASU18RLF#
B	K9316989016	\$14.51	Not in Stock	Low	DISTRIBUTOR ASSY HFI#
C	K9310214015	\$5.98	Not in Stock	Good	FLARE NUT A 1/2"HVII# C C3771BD
D	K9307768002	\$5.98	Good	Good	FLARE NUT-B 1/4"ASUA* HVII# D D6.35

SUBMIT



