

Inverter Driven Heat Pump

18,000 BTU Single Zone XLTH Wall Mounted System

Job Name _____
Location _____
Engineer _____
Submitted To _____
Submitted By _____
Reference _____

Date _____
Approval _____
Construction _____
Unit No _____
Drawing No _____

PRODUCT FEATURES

Auto Changeover
Weekly & 24 hr. Timer
Auto Louver: Up/Down
Minimum Heat Mode
Wireless Remote Control Included
Auto Restart
Economy Mode
Base Pan Heater



MODEL NUMBERS

| | |
|--------------|-------------|
| Indoor Unit | ASU18RLF |
| Outdoor Unit | AOU18RLXFWH |
| System | 18RLXFWH |

EFFICIENCIES

| | |
|--------------------------|-------------|
| SEER | 20 |
| SEER 2 | 20 |
| EER | 13.3 |
| EER 2 | 13.3 |
| HSPF | 10.4 |
| HSPF 2 (IV) / HSPF 2 (V) | 10/8.2 |
| COP | kW/kW 3.62 |
| COP | Btu/hW 12.3 |
| COP2 | kW/kW 3.62 |
| COP2 | Btu/hW 12.3 |

OUTDOOR TEMPERATURE OPERATION RANGE

| | | |
|---------|--------|-----------------------|
| Cooling | *F(*C) | -5 to 115 (-21 to 46) |
| Heating | | -15 to 75 (-26 to 24) |

CAPACITIES

| | | | |
|---------|-----------|-------|--------------|
| Cooling | Rated | Btu/h | 18000 |
| | Min.-Max. | | 7,000-23,000 |
| Heating | Rated | | 21600 |
| | Min.-Max. | | 7,000-29,000 |

LINESET REQUIREMENTS

| Connection Method | | Flare |
|------------------------|---------|---------------|
| Liquid | in (mm) | Ø3/8 (Ø9.52) |
| Gas | | Ø5/8 (Ø15.88) |
| Pre-charge length | ft (m) | 66 (20) |
| Minimum Length | | 16 (5) |
| Max. length | | 164 (50) |
| Max. height difference | | 98 (30) |

INDOOR DIMENSIONS & WEIGHT

| | | |
|-------------------|---------|---|
| Net (H x W x D) | in (mm) | 12-5/8 x 39-5/16 x 9 (320 x 998 x 228) |
| Gross (H x W x D) | | 12-9/16 x 42-15/16 x 16-7/8 (319 x 1,090 x 429) |
| Net Weight | lb (kg) | 31 (14) |
| Gross Weight | | 41 (18.5) |

OUTDOOR DIMENSIONS & WEIGHT

| | | |
|-------------------|---------|---|
| Net (H x W x D) | in (mm) | 32-11/16 x 35-7/16 x 13 (830 x 900 x 330) |
| Gross (H x W x D) | | 39-3/8 x 41-5/16 x 17-1/2 (1,000 x 1,050 x 445) |
| Net Weight | lb (kg) | 134 (61) |
| Gross Weight | | 152 (69) |

Warranty Information



7 Year Compressor, 5 Year Parts out-of-the-box Warranty



10 Year Compressor, 10 Year Parts Warranty when registered within 60 days of installation in a residence



12 Year Compressor, 12 Year Parts Warranty when registered within 60 days of installation in a residence, and installed by a Fujitsu Elite contractor

ACCESSORIES

| | |
|----------------|---------------------------|
| UTY-RVNUM | Wired Remote Controller |
| UTY-RNNUM | Wired Remote Controller |
| UTY-RSNUM | Simple Remote Controller |
| UTY-XWZX | External Connect Kit |
| UTY-TTRXZ1 | 24 V Thermostat Converter |
| FJ-RC-WIFI-1BT | Intesis WiFi Module |
| FJ-IR-WIFI-1NA | Intesis IR WiFi Module |
| UTY-TFNXZ2 | WiFi Interface Module |



This system combination is Energy Star qualified



+App available in Apple® App Store and Google® Play Store.

Due to continuous product improvements, specifications are subject to change without notice. Please log in to the Fujitsu Portal for the most up-to-date documentation
<https://connect.fujitsugeneral.com>

Effective Date: 11/4/2022

Fujitsu General America, Inc. • 340 Changebridge Rd, Pine Brook, NJ 07058 • Toll Free: (888) 888-3424 • www.fujitsugeneral.com

Inverter Driven Heat Pump

18,000 BTU Single Zone XLTH Wall Mounted System

FAN DATA

| | | | | |
|---------------------------|---------|-------|------------|---------------|
| Indoor Unit Airflow rate | Cooling | HIGH | CFM (m3/h) | 542 (920) |
| | | MED | | 436 (740) |
| | | LOW | | 365 (620) |
| | | QUIET | | 306 (520) |
| | Heating | HIGH | | 542 (920) |
| | | MED | | 436 (740) |
| | | LOW | | 365 (620) |
| | | QUIET | | 318 (540) |
| Outdoor Unit Airflow rate | Cooling | | | 1,489 (2,530) |
| | Heating | | | 1,489 (2,530) |

SOUND PRESSURE

| | | | | |
|--------------|---------|-------|--------|----|
| Indoor Unit | Cooling | HIGH | dB (A) | 43 |
| | | MED | | 37 |
| | | LOW | | 33 |
| | | QUIET | | 28 |
| | Heating | HIGH | | 44 |
| | | MED | | 37 |
| | | LOW | | 33 |
| | | QUIET | | 28 |
| Outdoor Unit | Cooling | | | 47 |
| | Heating | | | 50 |

REFRIGERANT

| | | | |
|-------------|------------|--------------|--|
| REFRIGERANT | | | |
| Type | R410A | | |
| Charge | lb oz | 4 lb 10.1 oz | |
| | g | 2100 | |
| Oil Type | POE (RB68) | | |

ELECTRICAL SPECIFICATIONS

| | | | | |
|---------------------------|---------|-----------|-------------------|-----------|
| Voltage/Frequency/Phase | | | 208/230 V ~ 60 Hz | |
| Available Voltage Range | | | 187–253 V | |
| Current | Cooling | Rated | A | 6.2 |
| | Heating | Rated | | 7.8 |
| Maximum Operating Current | | Cooling | | 13.5 |
| | | Heating | | 14.5 |
| Starting Current | | | | 8 |
| MCA | | | | 17 |
| Maximum Circuit Breaker | | | | 20 |
| Input Power | Cooling | Rated | kW | 1.35 |
| | | Min.–Max. | | 0.50–3.01 |
| | Heating | Rated | | 1.75 |
| | | Min.–Max. | | 0.48–3.23 |
| Power Factor | Cooling | | | 95 |
| | Heating | | | 97.6 |

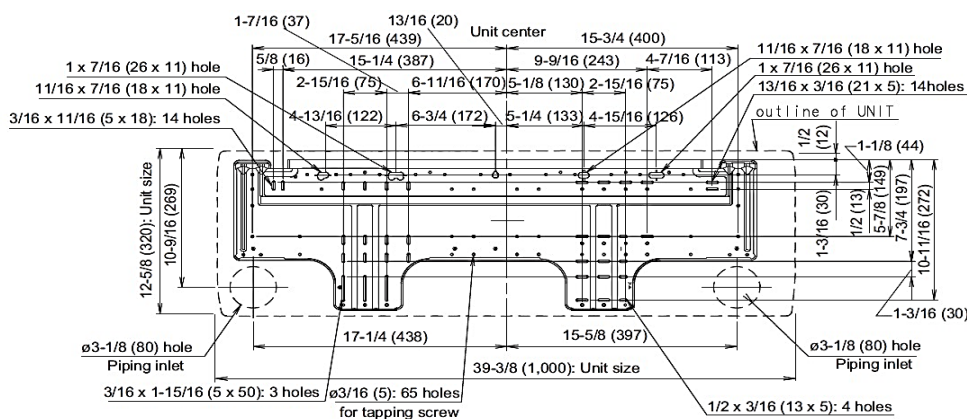
OTHER

| | | | |
|------------------|--------------|---------------|--|
| Moisture Removal | | pints/h (L/h) | 5.9 (2.8) |
| Energy Star | | Yes | |
| Drain hose | Material | PVC | |
| | Tip diameter | in (mm) | Ø 15/32 (Ø 12) (I.D.), Ø 5/8 (Ø 16) (O.D.) |
| Operation Range | Cooling | °F (°C) | 64 to 90 (18 to 32) |
| | | %RH | 80 or less |
| | Heating | °F (°C) | 88 (30) or less |

DIMENSIONS:

Units: In. (mm)

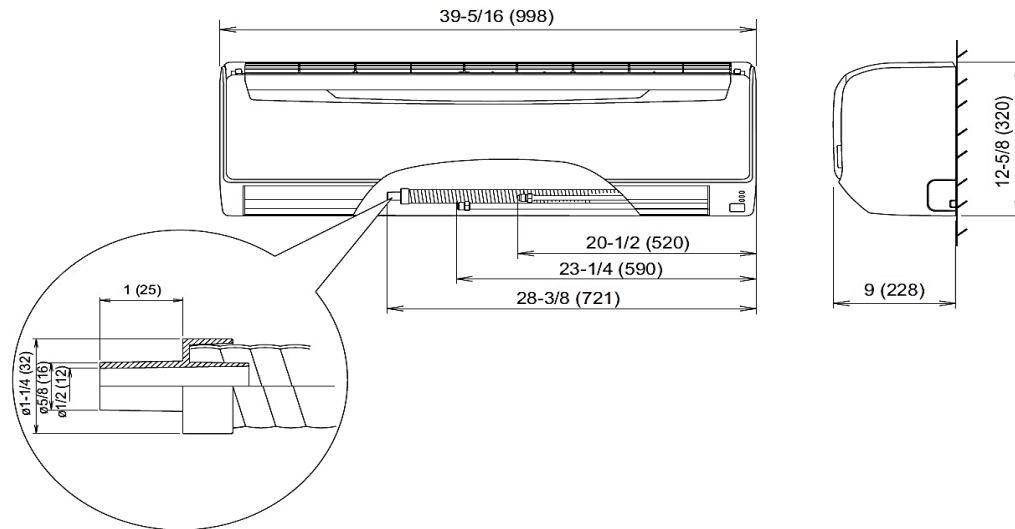
Wall Bracket Data:



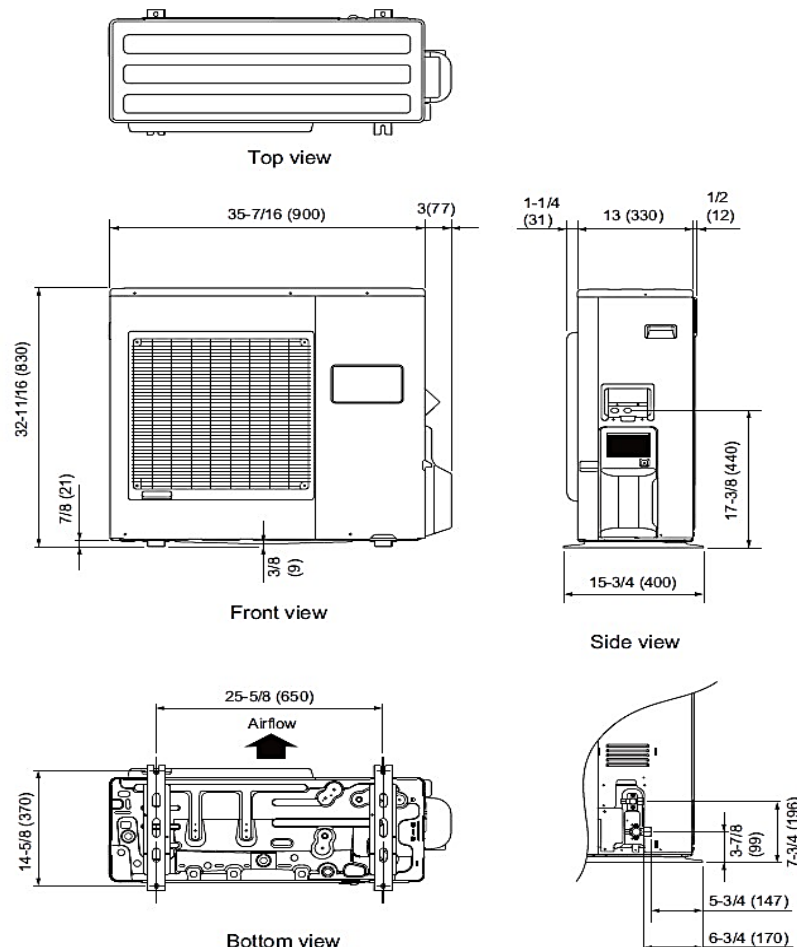
DIMENSIONS

Units: In. (mm)

Indoor Unit



Outdoor Unit



The Fujitsu logo is a worldwide trademark of Fujitsu General Limited. The Airstage logo and name is a worldwide trademark of Fujitsu General Limited and is a registered trademark in Japan, the USA and other countries or areas. Copyright 2022 Fujitsu General America, Inc. Fujitsu's products are subject to continuous improvements. Fujitsu reserves the right to modify product design, specifications and information in this brochure without notice and without incurring any obligations.

Note: Specifications are based on the following conditions:
Cooling: Indoor temperature of 80°F (26.7°C) DB/67°F (19.4°C) WB, and outdoor temperature of 95°F (35°C) DB/75°F (23.9°C) WB. Heating: Indoor temperature of 70°F (21.1°C) DB/60°F (15.6°C) WB, and outdoor temperature of 47°F (8.3°C) DB/43°F (6.1°C) WB. Pipe length: 25ft. (7.5m), Height difference: 0ft. (0m) (Outdoor unit - indoor unit).