

## Inverter Driven Heat Pump

## 36,000 BTU Single Zone Wall Mounted System

Job Name \_\_\_\_\_  
 Location \_\_\_\_\_  
 Engineer \_\_\_\_\_  
 Submitted To \_\_\_\_\_  
 Submitted By \_\_\_\_\_  
 Reference \_\_\_\_\_

Date \_\_\_\_\_  
 Approval \_\_\_\_\_  
 Construction \_\_\_\_\_  
 Unit No \_\_\_\_\_  
 Drawing No \_\_\_\_\_

### PRODUCT FEATURES

Auto Changeover  
 Weekly & 24 hr. Timer  
 Auto Louver: Up/Down  
 Minimum Heat Mode (Wi-Fi Adapter required)  
 Wireless Remote Control Included  
 Auto Restart  
 Economy Mode



MODEL NUMBERS				
Indoor Unit		ASUH36LPAS		
Outdoor Unit		AOUH36LPAS1		
System		36LPAS1		
EFFICIENCIES				
SEER		18		
SEER 2		18		
EER		8.1		
EER 2		8.1		
HSPF		11		
HSPF 2 (IV) / HSPF 2 (V)		9.6/7.3		
COP	kW/kW		3.22	
COP	Btu/hW		11	
COP2	kW/kW		3.22	
COP2	Btu/hW		11	
OUTDOOR TEMPERATURE OPERATION RANGE				
Cooling	*F(°C)	14 to 115 (-10 to 46)		
Heating		5 to 75 (-15 to 24)		
CAPACITIES				
Cooling	Rated	Btu/h	33000	
	Min.—Max.		9,900—34,100	
Heating	Rated		34000	
	Min.—Max.		8,700—35,000	
LINESET REQUIREMENTS				
Connection Method		Flare		
Liquid	in (mm)	Ø3/8 (Ø9.52)		
Gas		Ø5/8 (Ø15.88)		
Pre-charge length	ft (m)	66 (20)		
Minimum Length		16 (5)		
Max. length		164 (50)		
Max. height difference		98 (30)		
INDOOR DIMENSIONS & WEIGHT				
Net (H × W × D)	in (mm)	13-3/8 × 45-1/4 × 11 (340 × 1,150 × 280)		
Gross (H × W × D)		15-15/16 × 50 × 17-11/16 (405 × 1,270 × 450)		
Net Weight	lb (kg)	39 (17.5)		
Gross Weight		51 (23.0)		
OUTDOOR DIMENSIONS & WEIGHT				
Net (H × W × D)	in (mm)	31 × 37 × 12-5/8 (788 × 940 × 320)		
Gross (H × W × D)		38-1/16 × 40-7/16 × 17-1/2 (966 × 1,027 × 445)		
Net Weight	lb (kg)	117 (53)		
Gross Weight		134 (61)		

### Warranty Information



7 Year Compressor, 5 Year Parts out-of-the-box Warranty



10 Year Compressor, 10 Year Parts Warranty when registered within 60 days of installation in a residence



12 Year Compressor, 12 Year Parts Warranty when registered within 60 days of installation in a residence, and installed by a Fujitsu Elite contractor

### ACCESSORIES

UTY-RNRUZ*	Wired remote controller
UTY-RSRY	Simple remote controller
UTY-RHRY	Simple remote controller
UTY-XWZX	External Connect Kit
UTY-XWZXZ5	External Connect Kit
UTY-XCSXZ2	External Input and Output PCB
UTY-TWRXZ2	Communication Kit
UTY-TFSXF1	Wireless LAN adapter
UTY-VMSX	Modbus Converter
UTY-TTRXZ1	24V Thermostat Converter
UTY-VTGX	Network Converter



This system combination is Energy Star qualified



+App available in Apple® App Store and Google® Play Store.

Due to continuous product improvements, specifications are subject to change without notice. Please log in to the Fujitsu Portal for the most up-to-date documentation  
<https://connect.fujitsugeneral.com>

Effective Date: 11/4/2022

Fujitsu General America, Inc. • 340 Changebridge Rd, Pine Brook, NJ 07058 • Toll Free: (888) 888-3424 • [www.fujitsugeneral.com](http://www.fujitsugeneral.com)

## Inverter Driven Heat Pump

## 36,000 BTU Single Zone Wall Mounted System

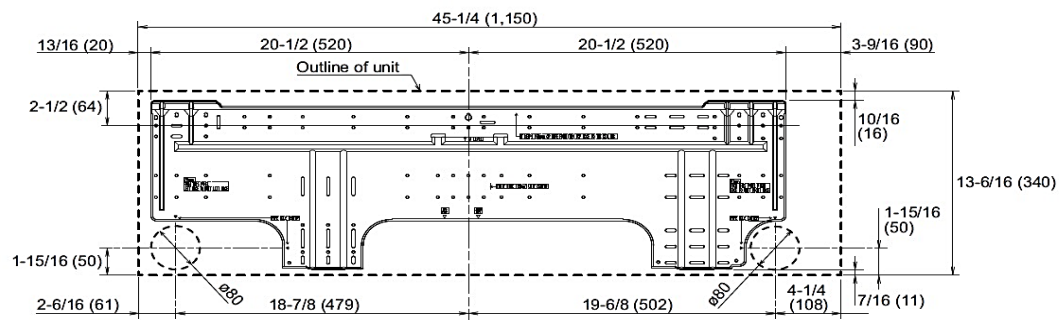
FAN DATA				
Indoor Unit Airflow rate	Cooling	HIGH	CFM (m3/h)	812 (1,380)
		MED		665 (1,130)
		LOW		536 (910)
		QUIET		418 (710)
	Heating	HIGH		812 (1,380)
		MED		665 (1,130)
		LOW		536 (910)
		QUIET		418 (710)
Outdoor Unit Airflow rate	Cooling		2,187 (3,715)	
	Heating		2,187 (3,715)	
SOUND PRESSURE				
Indoor Unit	Cooling	HIGH	dB (A)	50
		MED		45
		LOW		38
		QUIET		32
	Heating	HIGH		49
		MED		44
		LOW		38
		QUIET		32
Outdoor Unit	Cooling		53	
	Heating		54	
REFRIGERANT				
Type				R410A
Charge	lb oz	4 lb 10 oz		
	g	2100		
Oil Type				POE (RB68)

ELECTRICAL SPECIFICATIONS					
Voltage/Frequency/Phase		208/230 V ~ 60 Hz			
Available Voltage Range		187–253 V			
Current	Cooling	Rated	A	17.8	
	Heating	Rated		13.5	
Maximum Operating Current		Cooling		18.9	
		Heating		18.9	
Starting Current		17.8			
MCA		23.4			
Maximum Circuit Breaker		30			
Input Power	Cooling	Rated	kW	4.08	
		Min.–Max.		0.45–4.29	
	Heating	Rated		3.09	
		Min.–Max.		0.53–3.32	
Power Factor	Cooling	%			99.7
	Heating				99.8
OTHER					
Moisture Removal		pints/h (L/h)	10.1 (4.8)		
Energy Star		Yes			
Drain hose	Material		PP+HDPE		
	Tip diameter	in (mm)	Ø17/32 (Ø13.8) (I.D.), Ø19/32 to 21/32 (Ø15.0 to 16.8)		
Operation Range	Cooling	°F (°C)	64 to 90 (18 to 32)		
	Heating	%RH	80 or less		
		°F (°C)	86 (30) or less		

## DIMENSIONS:

Units: In. (mm)

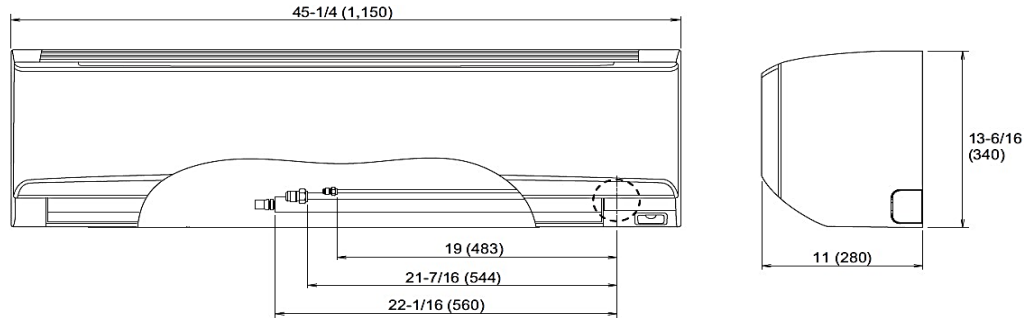
## Wall Bracket Data:



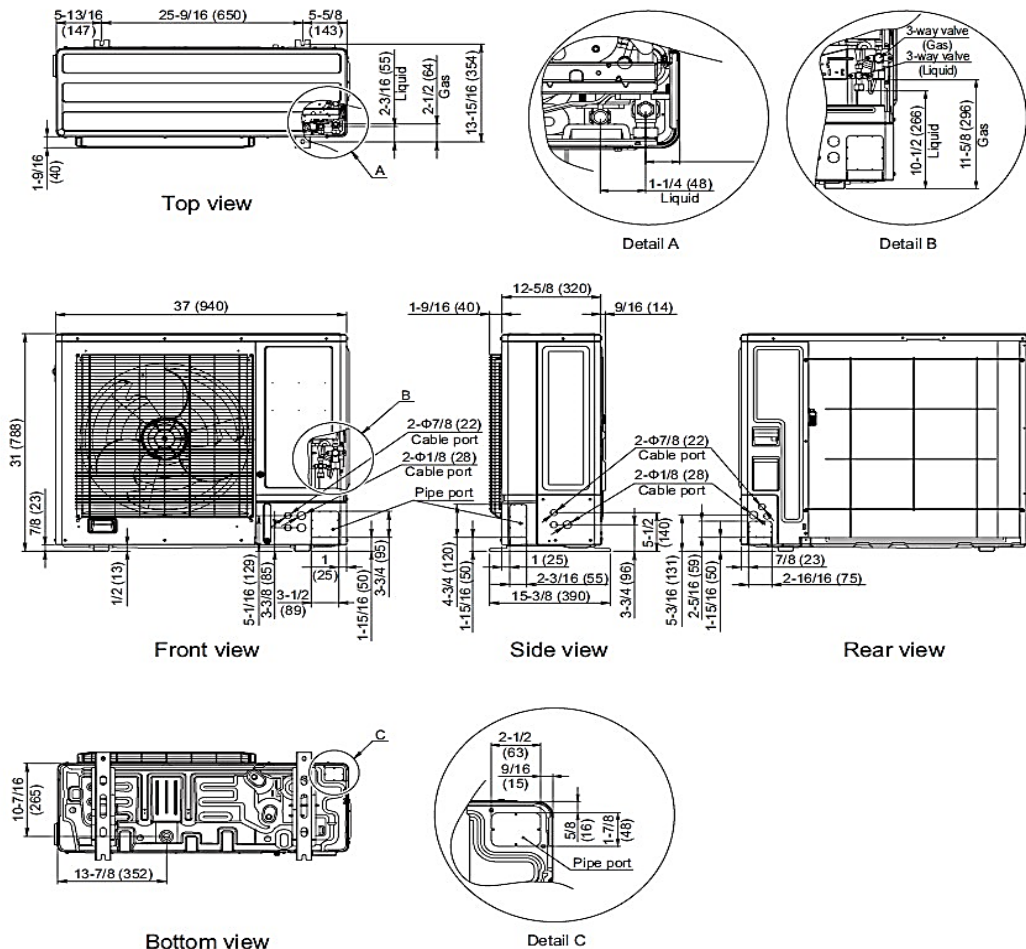
### DIMENSIONS

Units: In. (mm)

#### Indoor Unit



#### Outdoor Unit



The Fujitsu logo is a worldwide trademark of Fujitsu General Limited. The Airstage logo and name is a worldwide trademark of Fujitsu General Limited and is a registered trademark in Japan, the USA and other countries or areas. Copyright 2022 Fujitsu General America, Inc. Fujitsu's products are subject to continuous improvements. Fujitsu reserves the right to modify product design, specifications and information in this brochure without notice and without incurring any obligations.

Note: Specifications are based on the following conditions:  
Cooling: Indoor temperature of 80°F (26.7°C) DB/67°F (19.4°C) WB, and outdoor temperature of 95°F (35°C) DB/75°F (23.9°C) WB. Heating: Indoor temperature of 70°F (21.1°C) DB/60°F (15.6°C) WB, and outdoor temperature of 47°F (8.3°C) DB/43°F (6.1°C) WB. Pipe length: 25ft. (7.5m), Height difference: 0ft. (0m) (Outdoor unit – indoor unit).