

SPECIFICATIONS

- Notes:
- 4" FPT inlet/outlet with 4" plain end adapters, triple inlet and triple outlet.
 - Unit weight - w/ cast iron covers: 568 lbs. (For wet weight add 4,254 lbs.)
 - Maximum operating temperature: 150° F continuous
 - Capacities - Liquid: 510 gal.
Grease: 2,948 lbs. (403 gal.) @100 GPM
Solids: 102 gal.
 - Satisfies Miami DERM 99% efficiency requirements; retaining 2,817 lbs. of grease at 99.2% efficiency.
 - For gravity drainage applications only.
 - Do not use for pressure applications.
 - Cover placement allows full access to tank for proper maintenance.
 - Vent not required unless per local code.
 - Engineered inlet and outlet diffusers with inspection ports are removable to inspect / clean piping.
 - Integral air relief / Anti-siphon / Sampling access.
 - Adjustable cover adapters provide up to 4" of additional height.
 - Designed for below-grade, above-grade, indoor or outdoor installations.
 - Safety Star®, access restrictor built into each cover adapter, prevents accidental entry to tanks (450 lb rating).


ENGINEER SPECIFICATION GUIDE

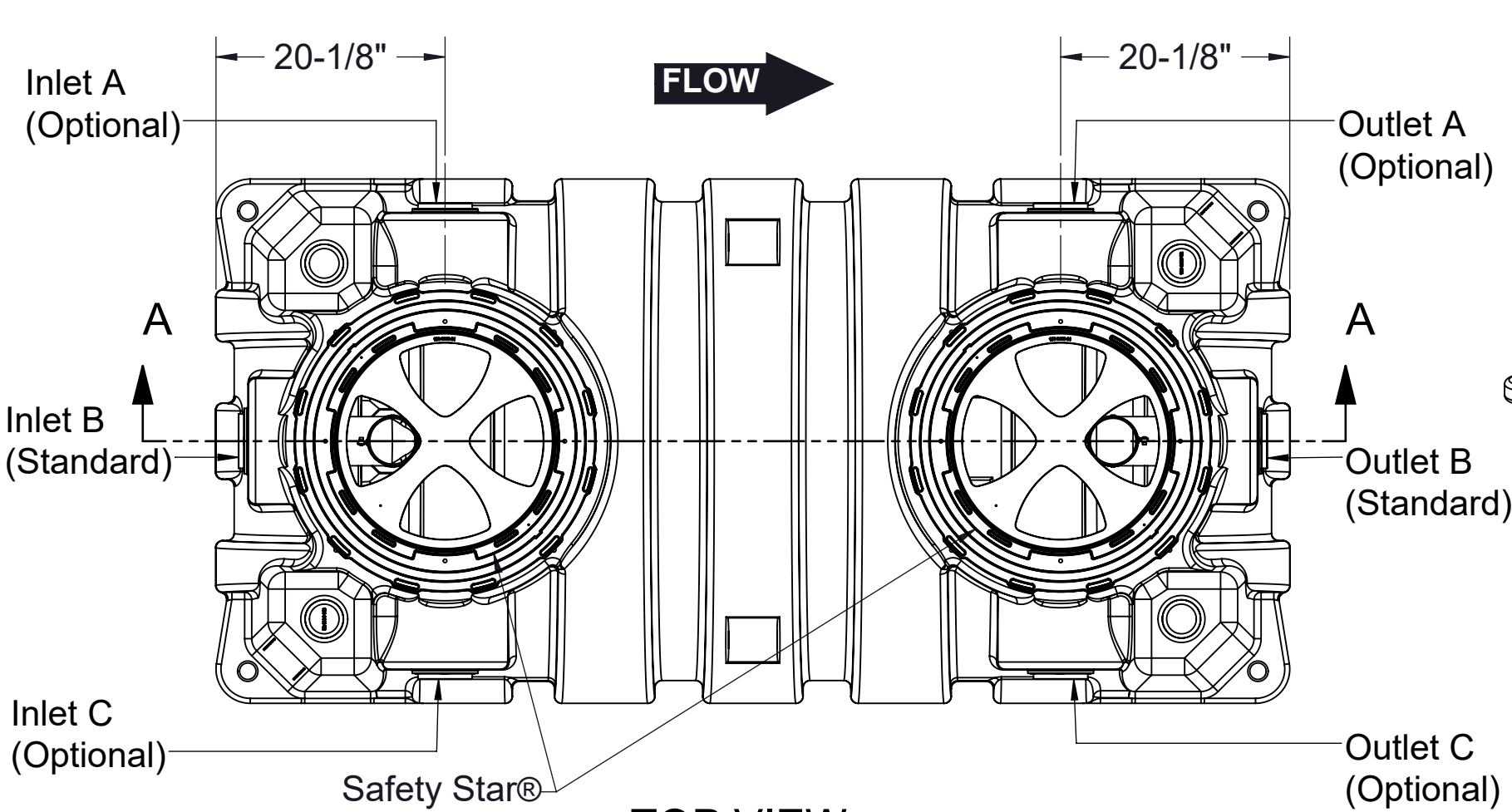
Schier Great Basin™ grease interceptor model # GB-500-B shall be lifetime guaranteed and made in USA of seamless, rotationally-molded polyethylene with minimum 7/16" uniform wall thickness. Interceptor shall be furnished for above or below-grade installation with adjustable cover adapter, Safety Star® access restrictor built into each cover adapter, three inlet and three outlet options. Interceptor shall be certified to ASME A112.14.3 (Type D) and CSA B481.1 as well as certified to IAPMO/ANSI Z1001-2021. Interceptor flow rate shall be 100 GPM. Interceptor grease capacity shall be 2,817 lbs. Cover shall provide water/gas-tight seal and have minimum 16,000 lbs. load capacity.

CERTIFIED PERFORMANCE

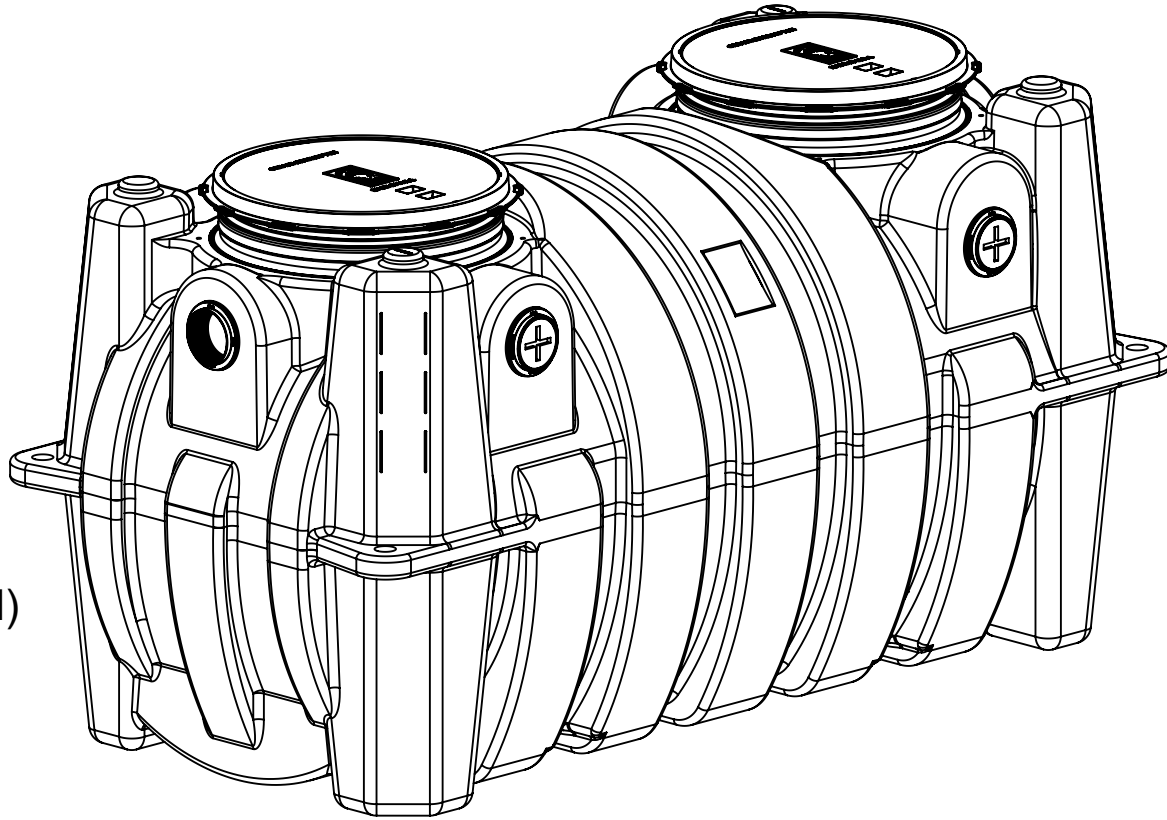
Great Basin™ hydromechanical grease interceptors are third party performance-tested and listed by IAPMO to ASME #A112.14.3 and CSA B481.1 grease interceptor standards and greatly exceed requirements for grease separation and storage. They are compliant to the Uniform Plumbing Code and the International Plumbing Code.

Type D certification does not require a flow control

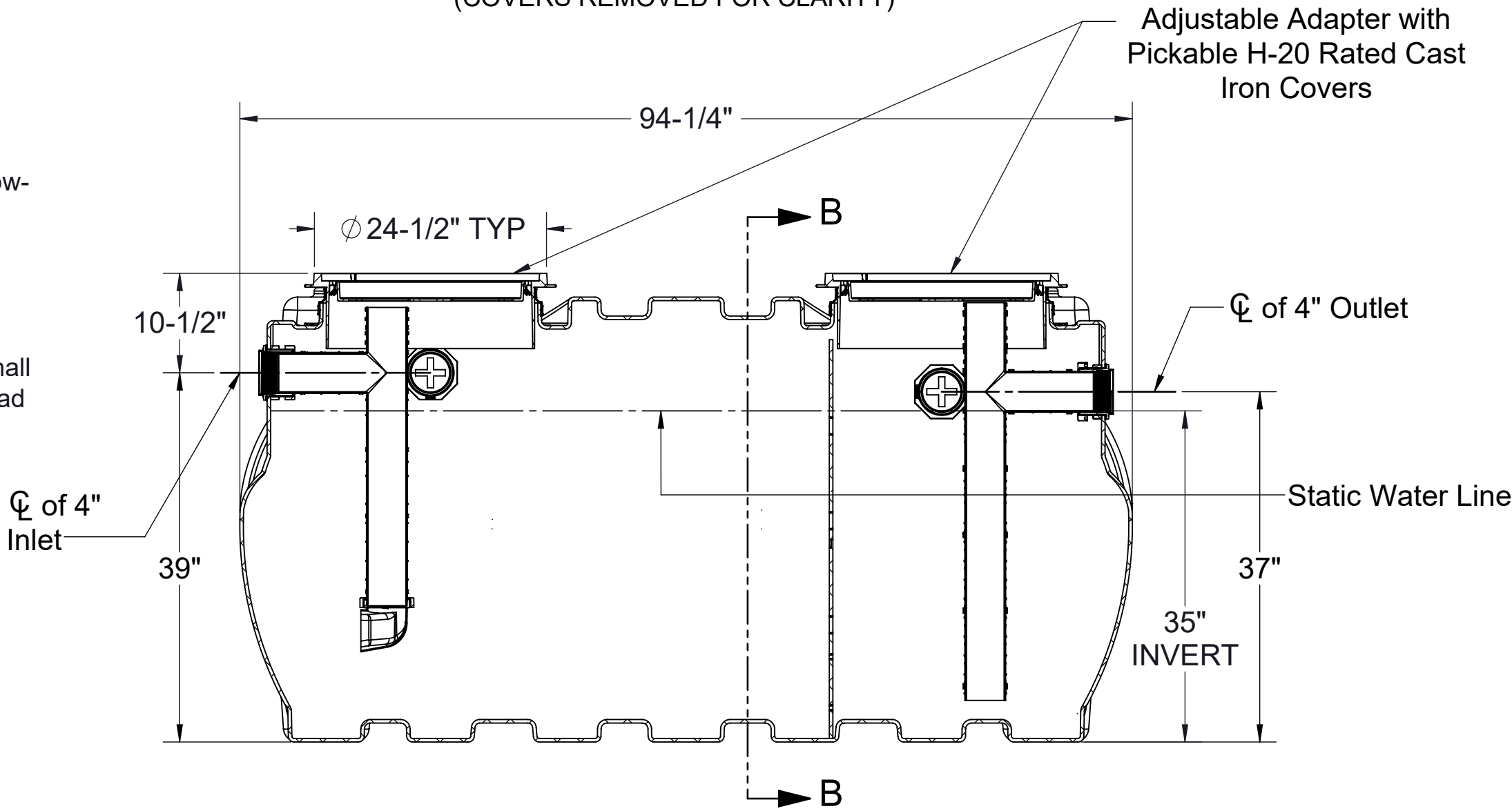
 Satisfies Miami DERM 99% efficiency requirements. Product labels are permanently attached to inside and outside of unit for easy viewing.



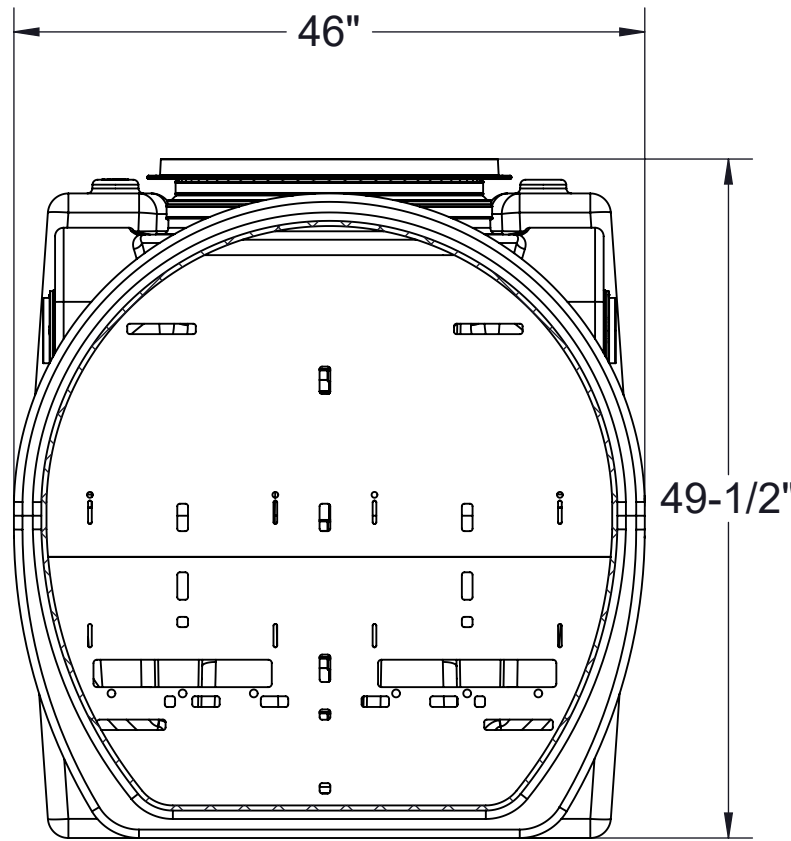
TOP VIEW
(COVERS REMOVED FOR CLARITY)



ISOMETRIC VIEW



SECTION A-A



SECTION B-B

SPECIFICATION SHEET

MODEL NUMBER:

GB-500-B

PROPRIETARY AND CONFIDENTIAL

THE INFORMATION CONTAINED IN THIS DRAWING IS THE SOLE PROPERTY OF SCHIER PRODUCTS. ANY REPRODUCTION IN PART OR AS A WHOLE WITHOUT THE WRITTEN PERMISSION OF SCHIER PRODUCTS IS PROHIBITED.

PART NUMBER:

4075-005-01

DESCRIPTION:

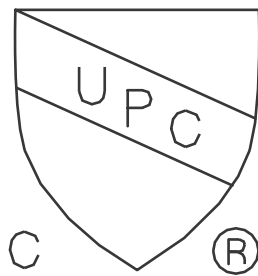
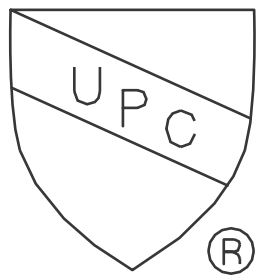
GB-500-B GREASE INTERCEPTOR 100 GPM, 4" INLET/OUTLET, H-20 RATED CAST IRON COVERS

DWG BY: C. BUSENITZ

DATE: 4/14/2022

REV: -

ECO: -



SCHIER

6455 Woodland Dr
Shawnee, KS 66218
Tel: 913-951-3300
Fax: 913-951-3399
schierproducts.com