

SPECIFICATIONS

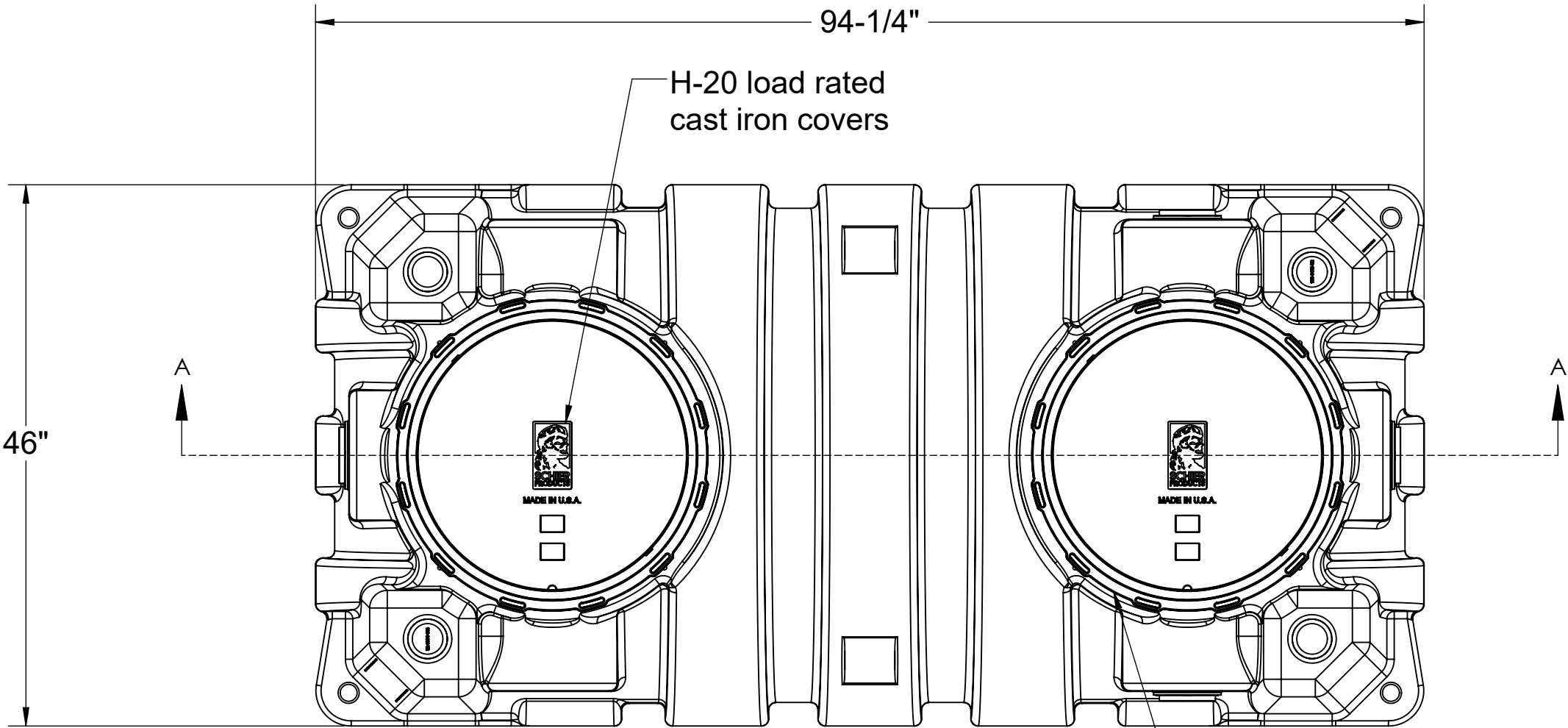
- 1. 4" Plain/Female Inlet/Outlet
- 2. Flow rate (4") = 125 GPM
- 3. Liquid capacity: 510 Gallons
- 4. Max solids/sediment capacity: 457 Gallons
- 5. H-20 load rated cast iron covers
- 6. Seamless molded polyethylene tank.

NOTES

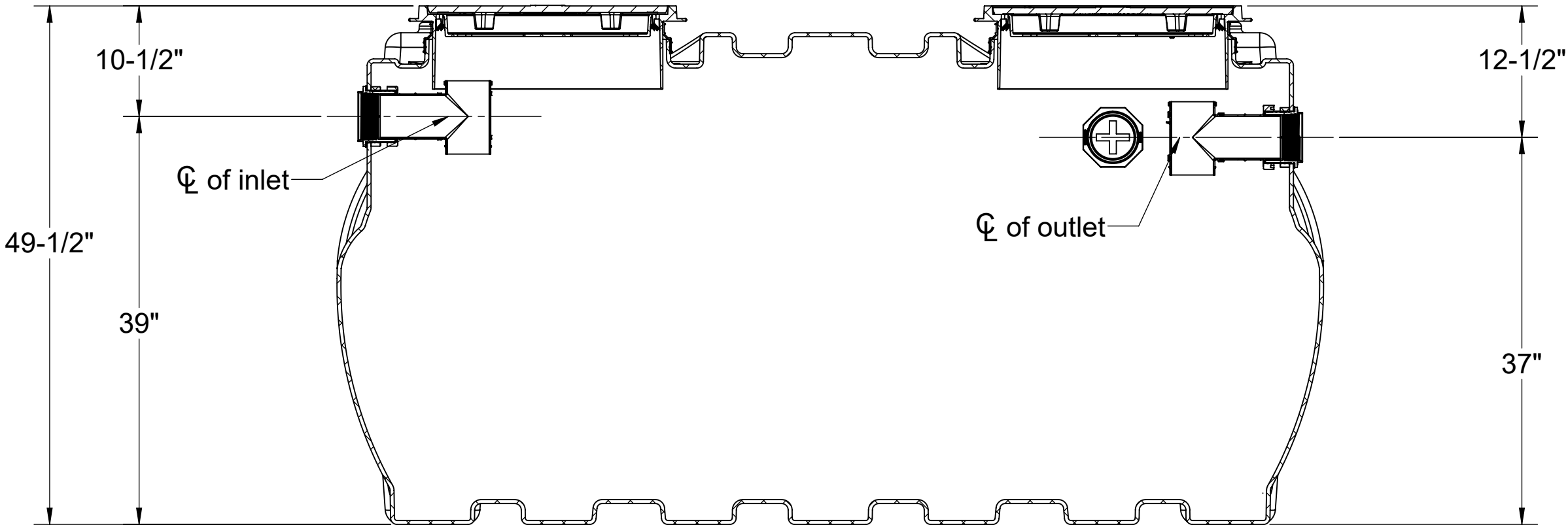
- 1. For gravity drainage applications only. Do not use for pressure applications.
- 2. Unit supplied with built-in adapter(s) for up to 4" of adjustability. Additional riser(s) available for deeper burial depth.
- 3. Cover placement allows full access to tank for proper maintenance.
- 4. Narrow footprint allows clearance through doorways and down stairwells.
- 5. Engineered inlet and outlet diffusers are removable to inspect/clean piping.
- 6. Designed for below-grade, above-grade, indoor, or outdoor installations

ACCESSORIES:

- Field cut risers for extending covers to grade
- High water anchor kit
- Pumpout Port Kit
- Cover adapter tie down kit
- Membrane clamping collar kit
- Above grade support kit



TOP VIEW



SECTION A-A

SPECIFICATION SHEET

MODEL NUMBER:

SI-500

PROPRIETARY AND CONFIDENTIAL

THE INFORMATION CONTAINED IN THIS DRAWING IS THE SOLE PROPERTY OF SCHIER PRODUCTS. ANY REPRODUCTION IN PART OR AS A WHOLE WITHOUT THE WRITTEN PERMISSION OF SCHIER PRODUCTS IS PROHIBITED.

PART NUMBER: 5075-001-01

DESCRIPTION:

SOLIDS INTERCEPTOR, 510 LIQUID GALLONS, 457 GALLON SOLIDS CAPACITY, 4" PLAIN/FEMALE INLET/OUTLET, H-20 LOAD RATED CAST IRON COVER

DWG BY:

B.BROWN

DATE:

6/2/2022

REV:

-

ECO:

-



SCHIER

6455 Woodland Dr  
Shawnee, KS 66218  
Tel: 913-951-3300  
Fax: 913-951-3399  
schierproducts.com