

SPECIFICATIONS

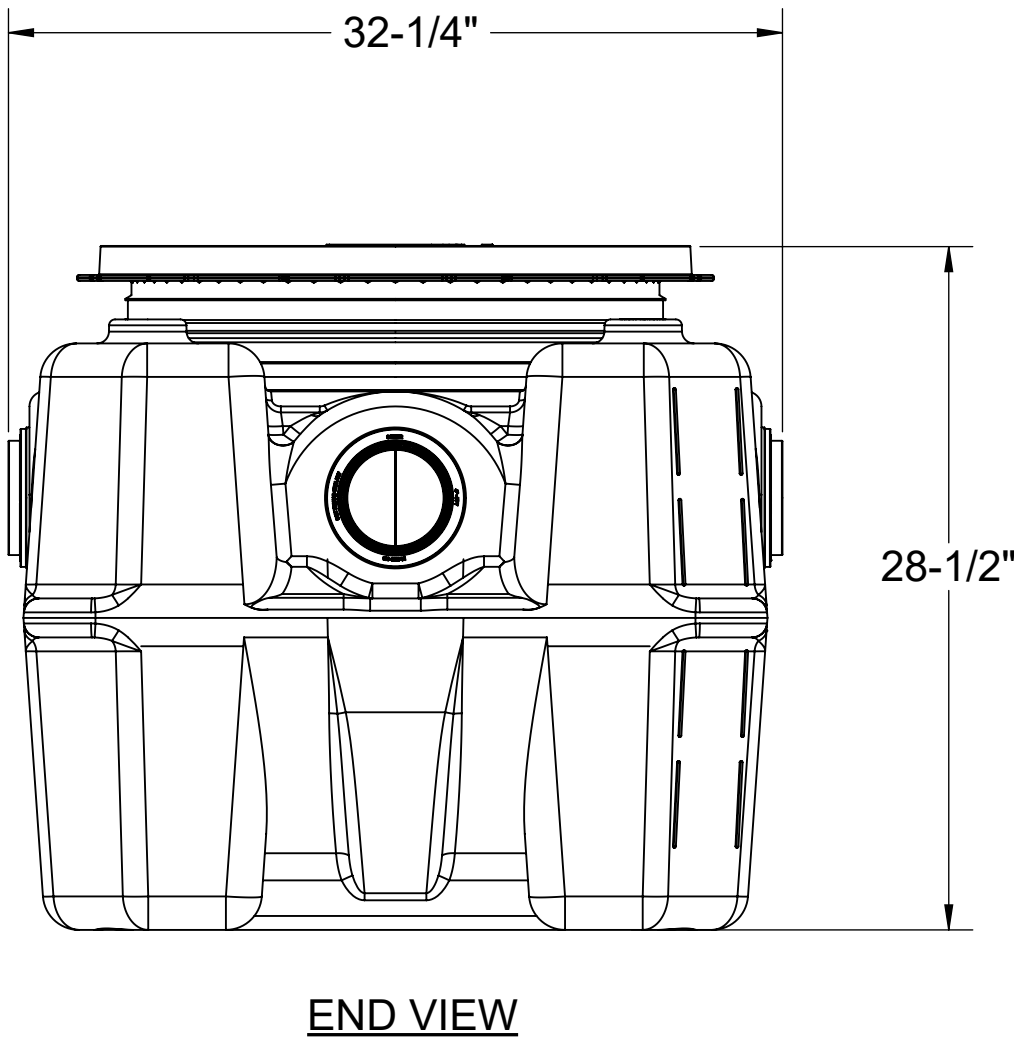
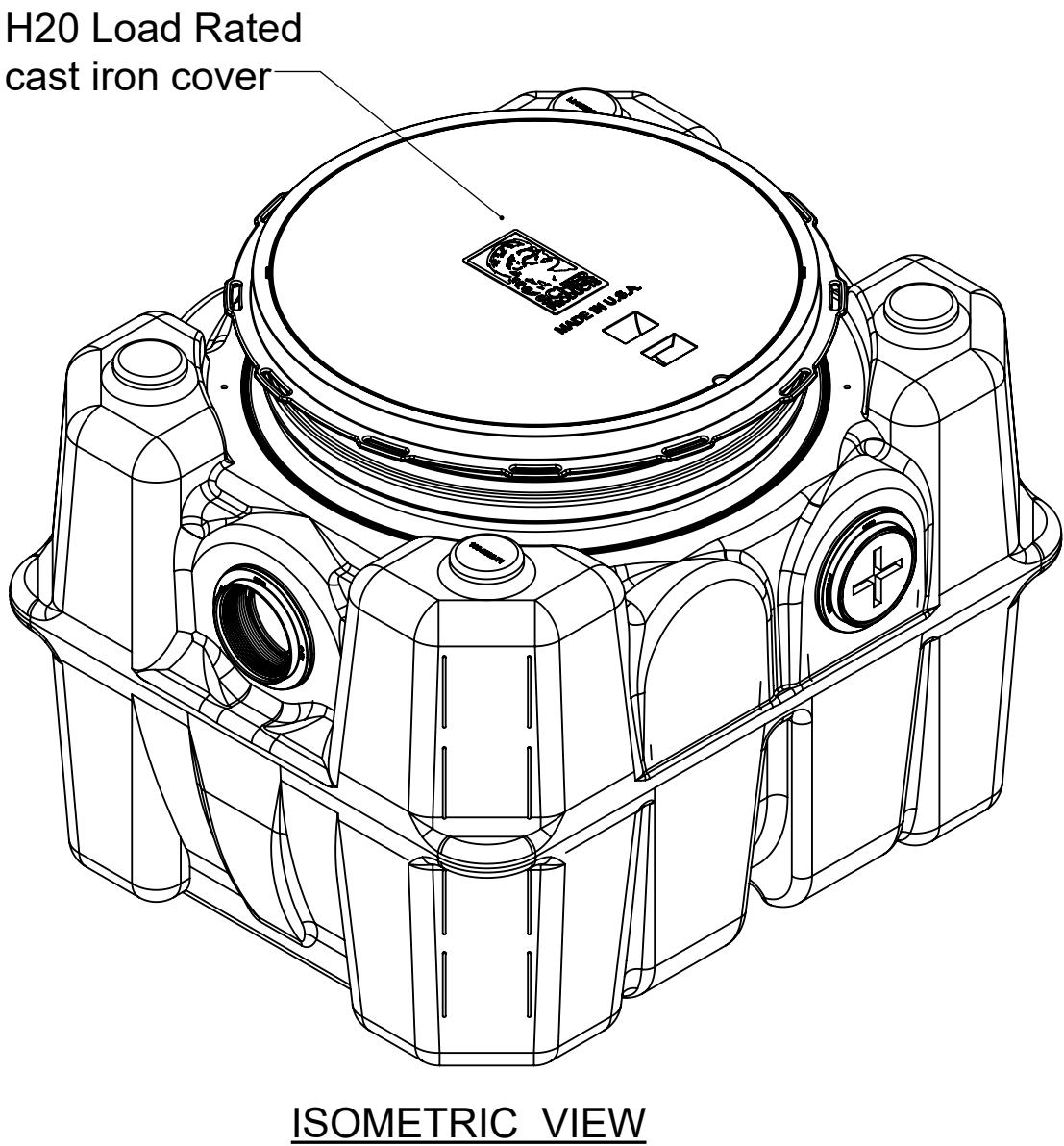
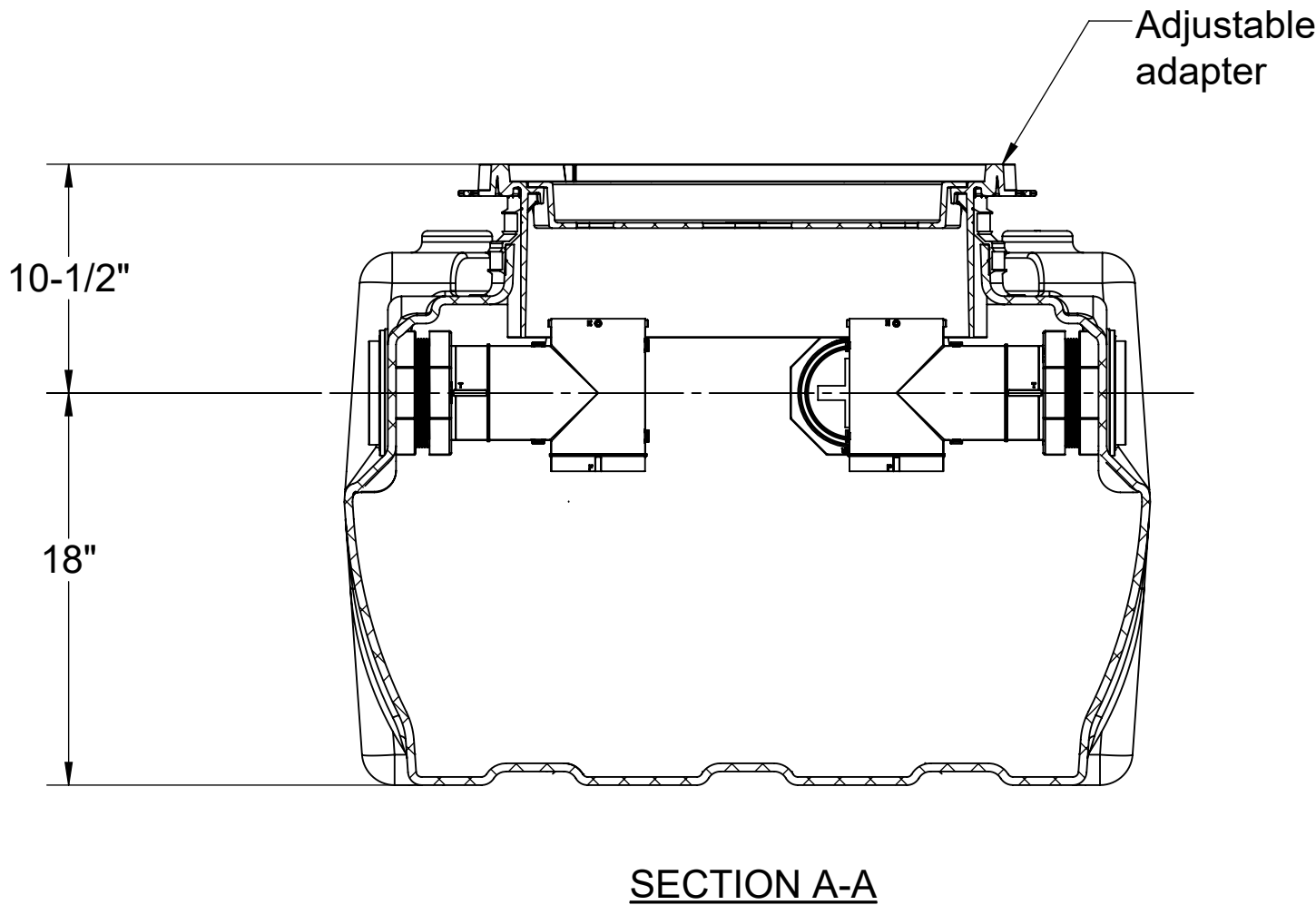
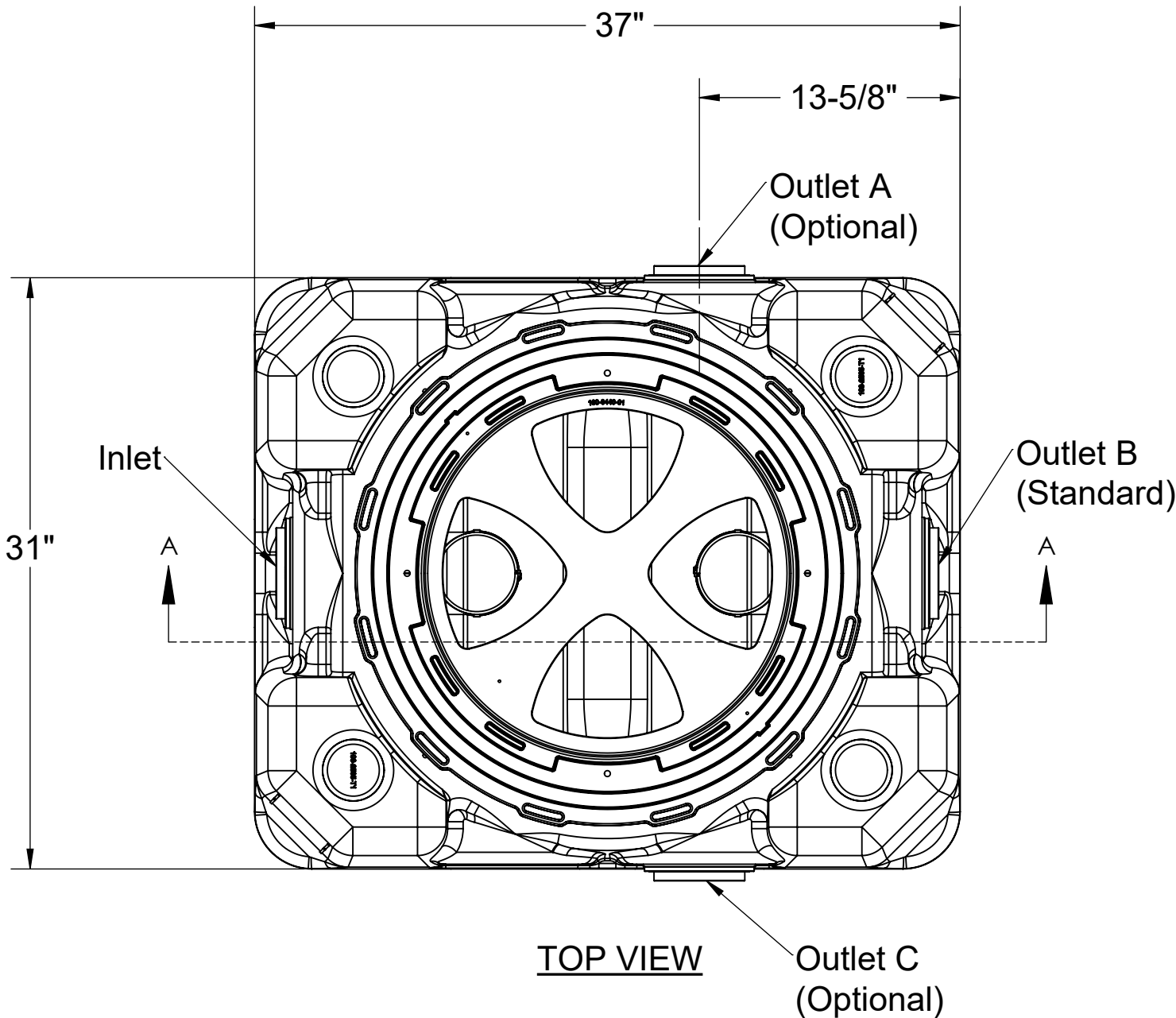
- 1. 4" Plain/Female Inlet/Outlet
- 2. Flow rate (4") = 125 GPM
- 3. Liquid capacity: 65 Gallons
- 4. Max solids/sediment capacity: 53 Gallons
- 5. H2O Load Rated Cast Iron Cover
- 6. Seamless molded polyethylene tank.

NOTES

- 1. For gravity drainage applications only. Do not use for pressure applications.
- 2. Unit supplied with built-in adapter(s) for up to 4" of adjustability. Additional riser(s) available for deeper burial depth.
- 3. Cover placement allows full access to tank for proper maintenance.
- 4. Narrow footprint allows clearance through doorways and down stairwells.
- 5. Engineered inlet and outlet diffusers are removable to inspect/clean piping.
- 6. Designed for below-grade, above-grade, indoor, or outdoor installations

ACCESSORIES:

- Field cut risers for extending covers to grade
- High water anchor kit
- Pumpout Port Kit
- Cover adapter tie down kit
- Membrane clamping collar kit



SPECIFICATION SHEET

<div>MODEL NUMBER:</div> <div>SI-50</div> <div>PROPRIETARY AND CONFIDENTIAL</div> <div>THE INFORMATION CONTAINED IN THIS DRAWING IS THE SOLE PROPERTY OF SCHIER PRODUCTS. ANY REPRODUCTION IN PART OR AS A WHOLE WITHOUT THE WRITTEN PERMISSION OF SCHIER PRODUCTS IS PROHIBITED.</div>	<div>PART NUMBER:5025-002-01</div>						
	<div>DESCRIPTION:</div> <div>SOLIDS INTERCEPTOR, 65 LIQUID GALLONS, 53 GALLON SOLIDS CAPACITY, 4" PLAIN/FEMALE INLET/OUTLET, H-20 LOAD RATED CAST IRON COVER</div>						
	<div>DWG BY:</div>	<div>B.BROWN</div>	<div>DATE:</div>	<div>6/2/2022</div>	<div>REV:</div>	<div>-</div>	<div>ECO:</div>

**SCHIER**

6455 Woodland Dr
Shawnee, KS 66218
Tel: 913-951-3300
Fax: 913-951-3399
schierproducts.com