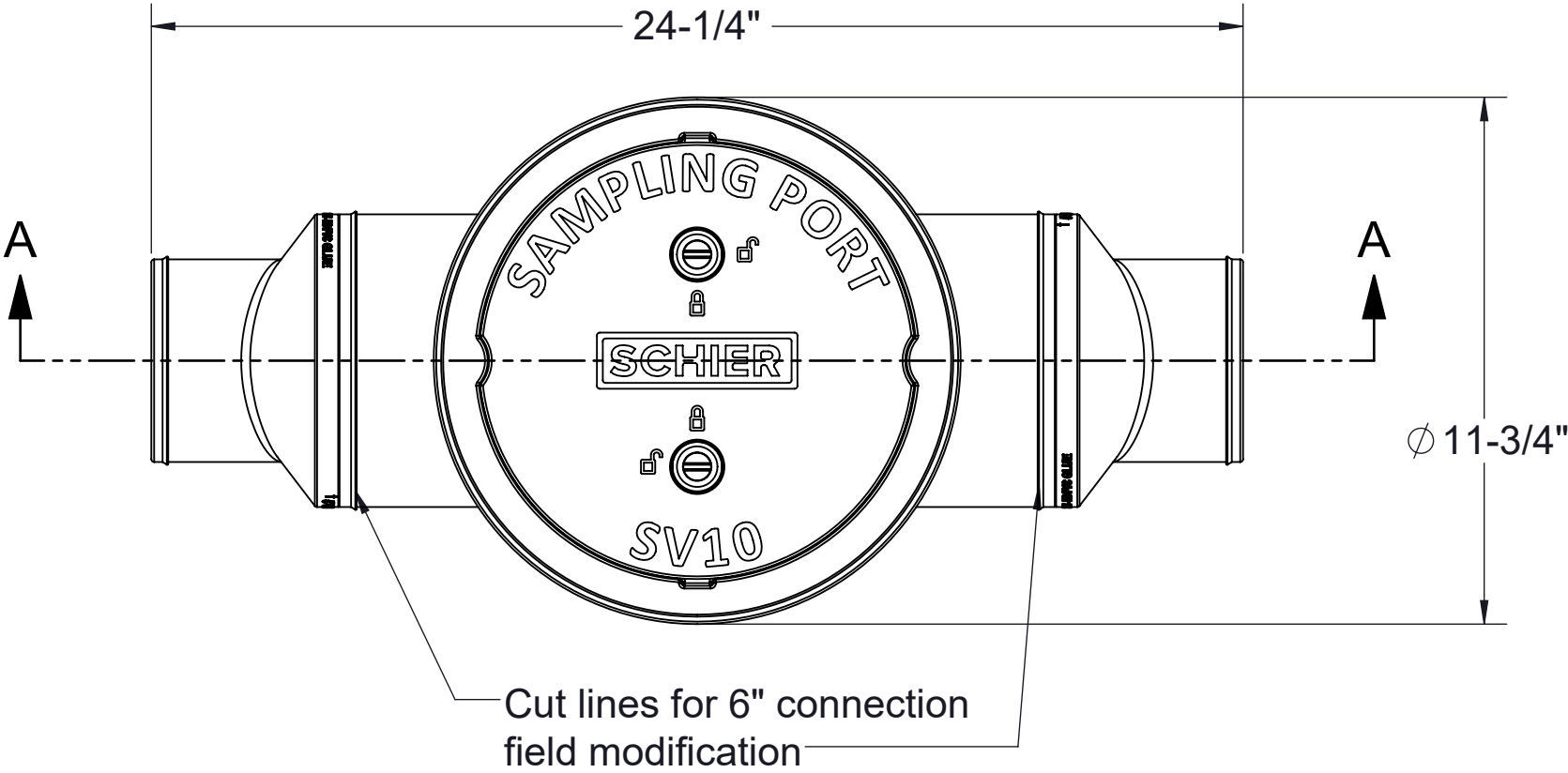


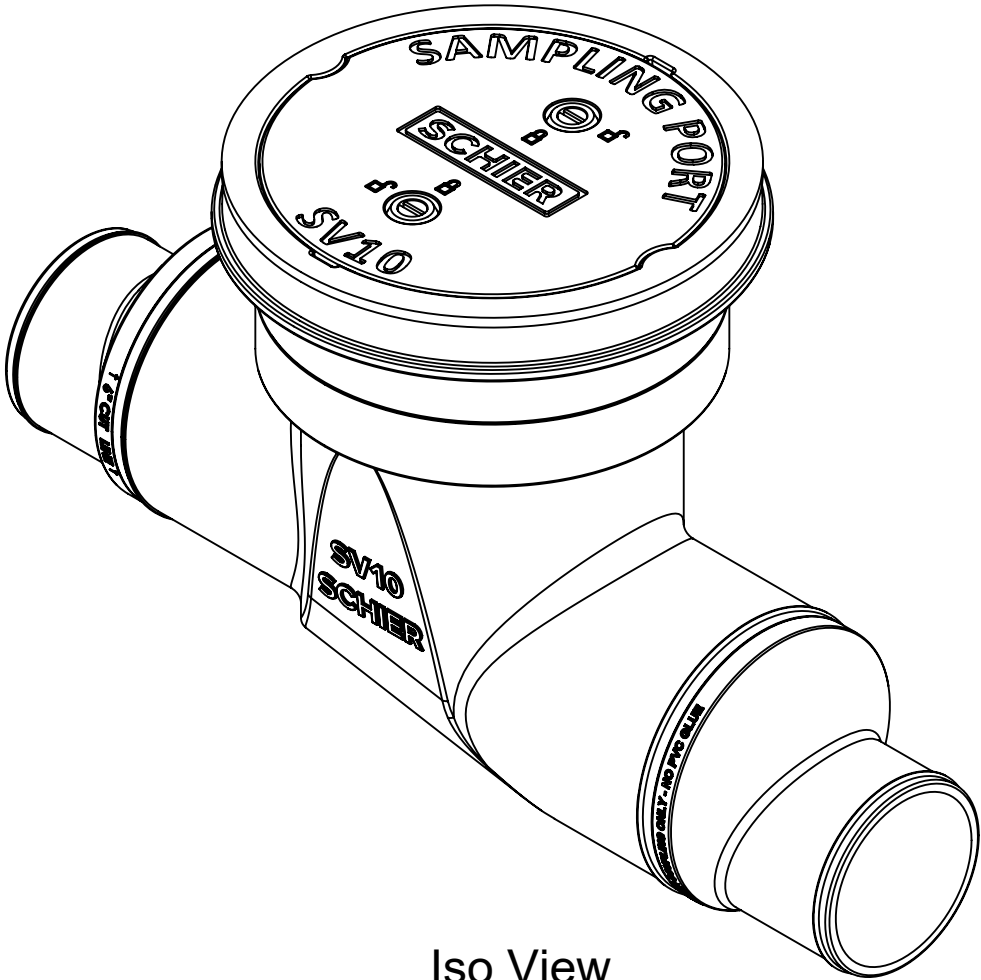
- NOTES**
- 1. 4" plain end inlet/outlet
  - 2. Field modifiable to 6" plain end inlet/outlet
  - 3. Unit weight - 9 lbs.
  - 4. Maximum operating temperature: 150° F continuous
  - 5. Offset connections
  - 6. 2 rolls of 33" x 2" butyl mastic tape provided for sealing build-your-own riser joints

**ENGINEER SPECIFICATION GUIDE**  
Schier Sewer Viewer™ sampling port model # SV10 shall be lifetime guaranteed and made in USA of seamless, rotationally-molded polyethylene. Sampling port shall be furnished for above or below grade installation. Cover shall provide water/gas-tight seal and have minimum 16,000 lbs. load capacity.

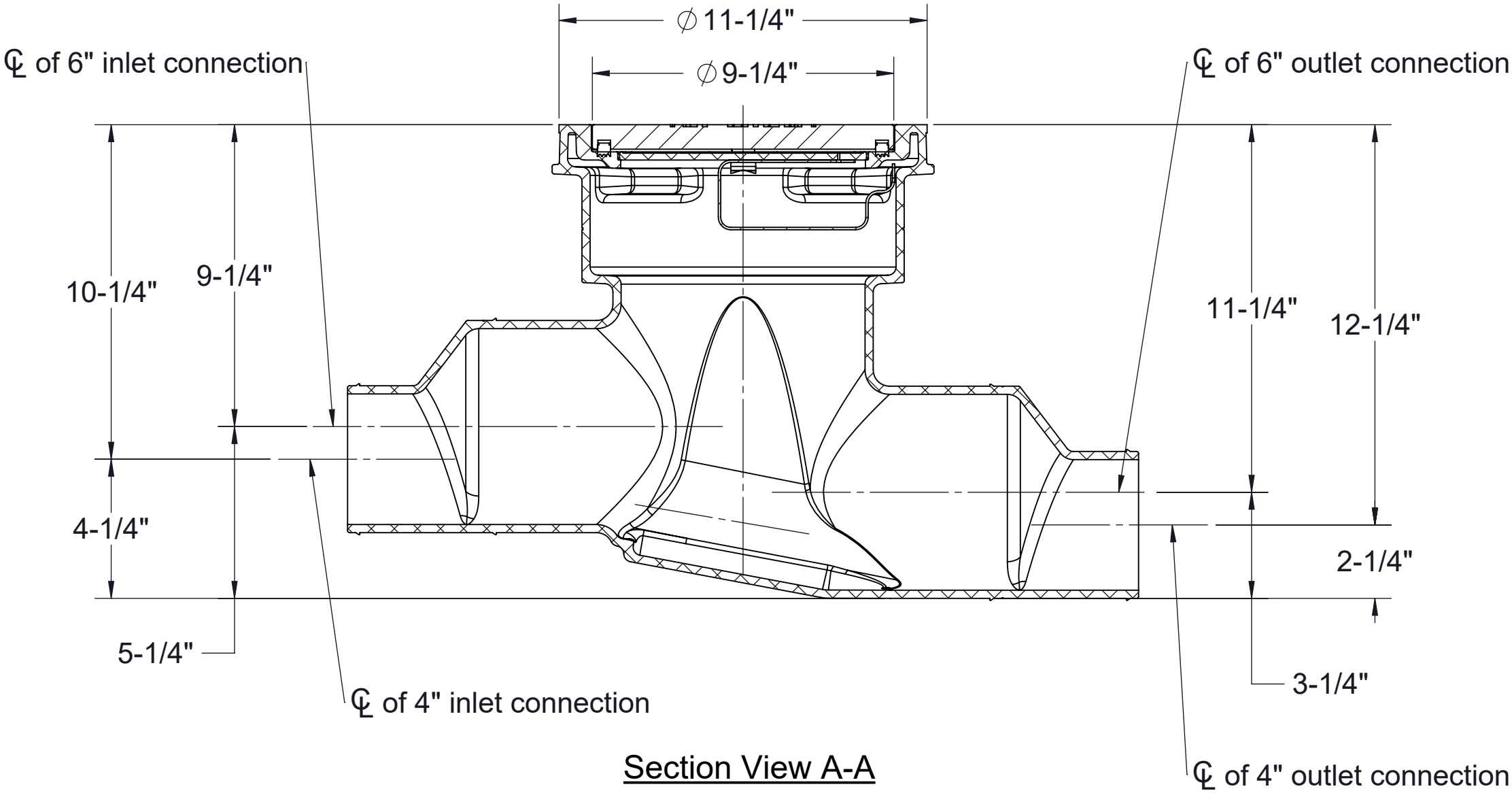
- ACCESSORIES:**
- Field Cut Risers for extending cover to grade



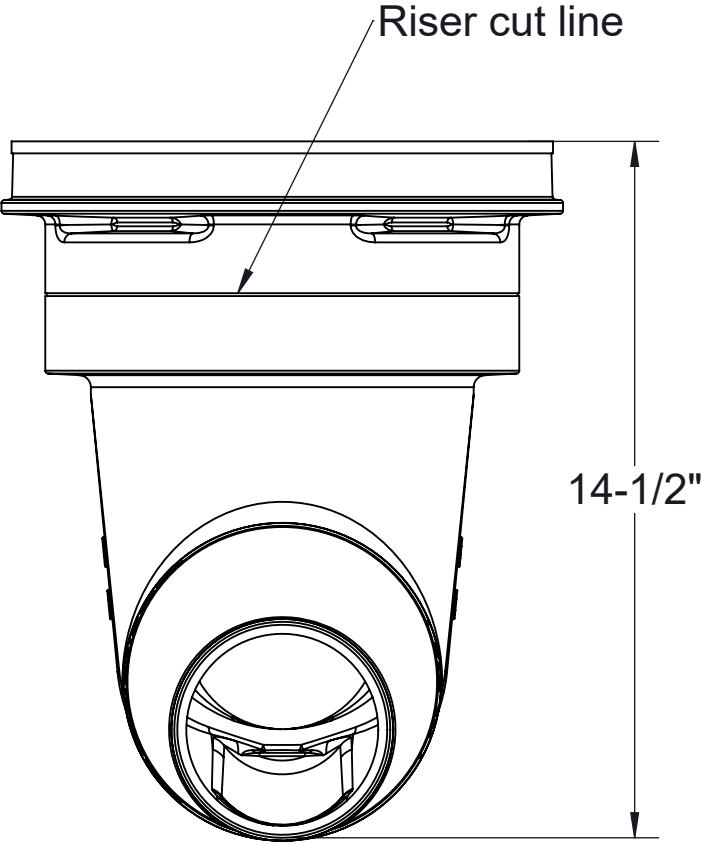
Top View



Iso View



Section View A-A



Outlet End View

**SPECIFICATION SHEET**

**MODEL NUMBER:**

**SV10**

PROPRIETARY AND CONFIDENTIAL

THE INFORMATION CONTAINED IN THIS DRAWING IS THE SOLE PROPERTY OF SCHIER PRODUCTS. ANY REPRODUCTION IN PART OR AS A WHOLE WITHOUT THE WRITTEN PERMISSION OF SCHIER PRODUCTS IS PROHIBITED.

**PART NUMBER:** 8065-001-01

**DESCRIPTION:**  
SV10 SEWER VIEWER SAMPLING PORT, 4" CONNECTIONS (FIELD MODIFIABLE TO 6"), POLYETHELENE COVER

**DWG BY:** B.BROWN **DATE:** 6/6/2022 **REV:** - **ECO:** -



**SCHIER**

6455 Woodland Dr  
Shawnee, KS 66218  
Tel: 913-951-3300  
Fax: 913-951-3399  
schierproducts.com