



SCHIER

Catalog No.9



Make it Better	05
Lifetime Guaranteed	07
Locally Stocked	09
Made in the USA	11
Pretreatment Pledge	13
Great Basin™ – Indoor Installations	14
Great Basin™ – Outdoor Installations	20
Covers	26
Field Cut Risers	28
Pumpout Ports	30
Great Basin™ Performance	32
Grease Production Sizing™	34
Grease Monkey™ Sizing Tool	35
Great Basin™ Specifications	36
Big Foot™ Gravity Interceptors	42
Sewer Viewer™ Sampling Ports	46
Accessories	50



4 *One of Schier's Product Makers secures an inlet connection for a model GB-250*



Make it Better

There's been a resurgence in the school of thought that things should be built to last. People now expect more from their coolers, jeans, workboots and blenders. We think you should expect the same from your grease interceptor. When we started with Schier in 2003, half of our products were made from steel. Guaranteed to fail. Some plumbers would half-joke "hey man, that's job security."

In 2006 when we launched the Great Basin™, we made a bet that our customers wanted something better. We believed that grease interceptors should not only be ridiculously efficient but they should also last a long time.

We think that job security comes not from built in obsolescence but from taking your time to do the right thing. Thank you for being a part of what we do. We look forward to working with you.



Charlie Ismert
President, Sales Director



Luke Ismert
CEO





Lifetime Guaranteed

Effective January 1st 2018 Schier Products represents and warrants that all grease interceptor products (“Products”) will be free from any and all defects in material and workmanship during the lifetime of the plumbing system in which the Products were originally installed and will, at its option, agree to repair, replace, or supply credit to the original purchaser.

This warranty does not cover wear and tear, extreme temperatures or pH levels, nor does it cover damage from naturally occurring phenomenon, including, but not limited to UV, freeze-related damage, or natural disasters. If the Products are warehoused without cover from the elements (direct sun, rain, sleet, snow, windblown gravel dust or sand) or are susceptible to damage from regular business traffic (passing forklifts and vehicles) this warranty will be null and void and the Products will not be considered for return. This warranty does not cover the purchaser’s cost for parts required in routine maintenance. This warranty shall be effective if, and only if, the Products were:

- a. installed in accordance with Schier Product’s notes, specifications and instructions, for installation, operation and maintenance;
- b. installed in conformance with all applicable building and plumbing codes and passed all applicable testing methods immediately following installation;
- c. not subjected to misuse or abuse, whether negligent or intentional;
- d. never modified, repaired or altered by any individual(s) not authorized by Schier Products;
- e. installed by a licensed plumber.

This warranty is the purchaser’s sole and exclusive remedy, and acceptance of this exclusive remedy is a condition of the purchase of these Products. In no event shall Schier Products be liable for any incidental, special, consequential or punitive damages, or for any costs, attorney fees, expenses, losses or delays claimed to be as a consequence of any damage to, failure of, or defect in any products including, but not limited to, any claims for loss of profits, transportation, removal and installation charges. This warranty is exclusive and in lieu of all other warranties or conditions, written or oral, expressed or implied.

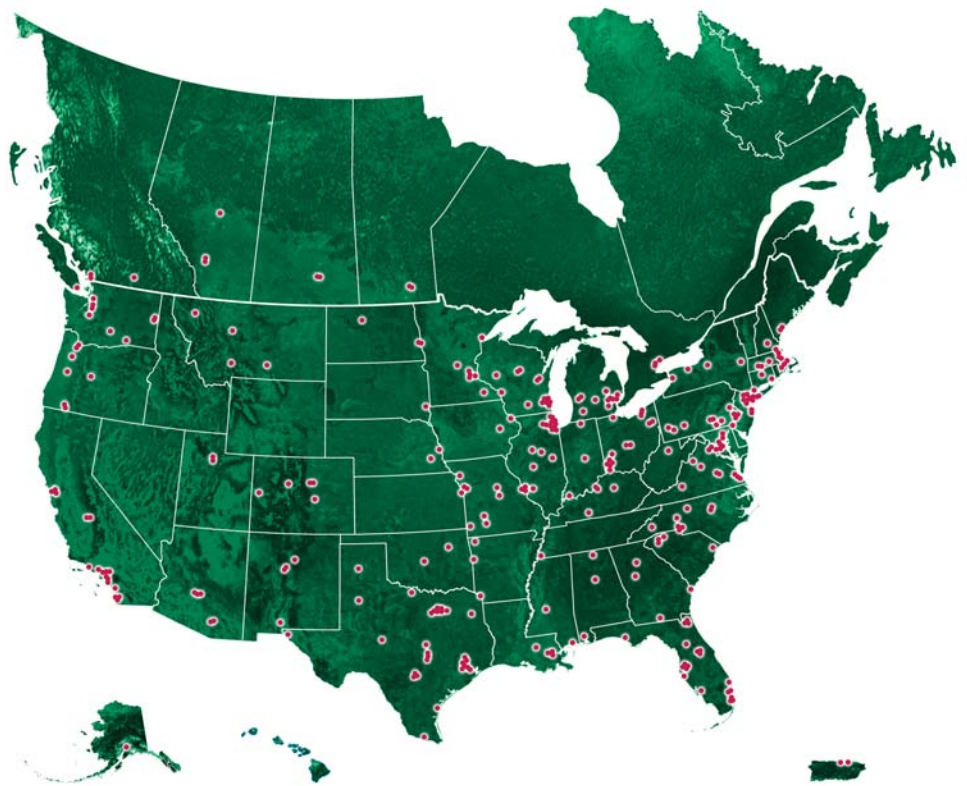


8 Schier's '56 Chevy 6400 making a hometown delivery in Kansas City.



Locally Stocked

With nearly 300 brick and mortar dealers throughout North America, we have a nearby store with your Great Basin™ grease interceptor in-stock and ready for pick-up. Visit schierproducts.com to find your local dealer.





Captain Joe Molen, USMC (Ret), father of our National Accounts Manager Sean Molen, raises Schier's American flag on Veterans Day, 2016.



Made in the USA

We're proud that all of our products are 100% American made. Making it here ensures better quality and reliable sourcing for every component. But we don't think you should buy from us just because we're Made in the USA; you should buy from us if you believe that we make the best product on the market. Simple as that.





Pretreatment Pledge

A healthy conveyance system requires a comprehensive approach that includes effective regulations and enforcement, kitchen best management practices and appropriately sized and maintained grease interceptors.

Schier is committed to forging a partnership with the pretreatment community to help reduce and eliminate the problems associated with grease in conveyance systems. To that end we pledge to:

- Design, test and manufacture products that provide the best separation efficiency, the most durable construction and the simplest installation, inspection and maintenance features
- Listen to your ideas regarding new and improved products
- Provide information and education on emerging technologies, industry studies and best practices from jurisdictions across the country

What we ask of you, our pretreatment officials, is to support an environment of innovation through collaboration with all stakeholders and openness to new and emerging technologies.

Great Basin™

high capacity grease interceptors



Indoor Installations

Fully redesigned in 2017, Schier's lineup of indoor Great Basin™ models have reduced the complexity of product selection. Each model offers two flow rates, two pipe sizes and the ability to be installed under the sink or buried. Small, medium, large. Simple.



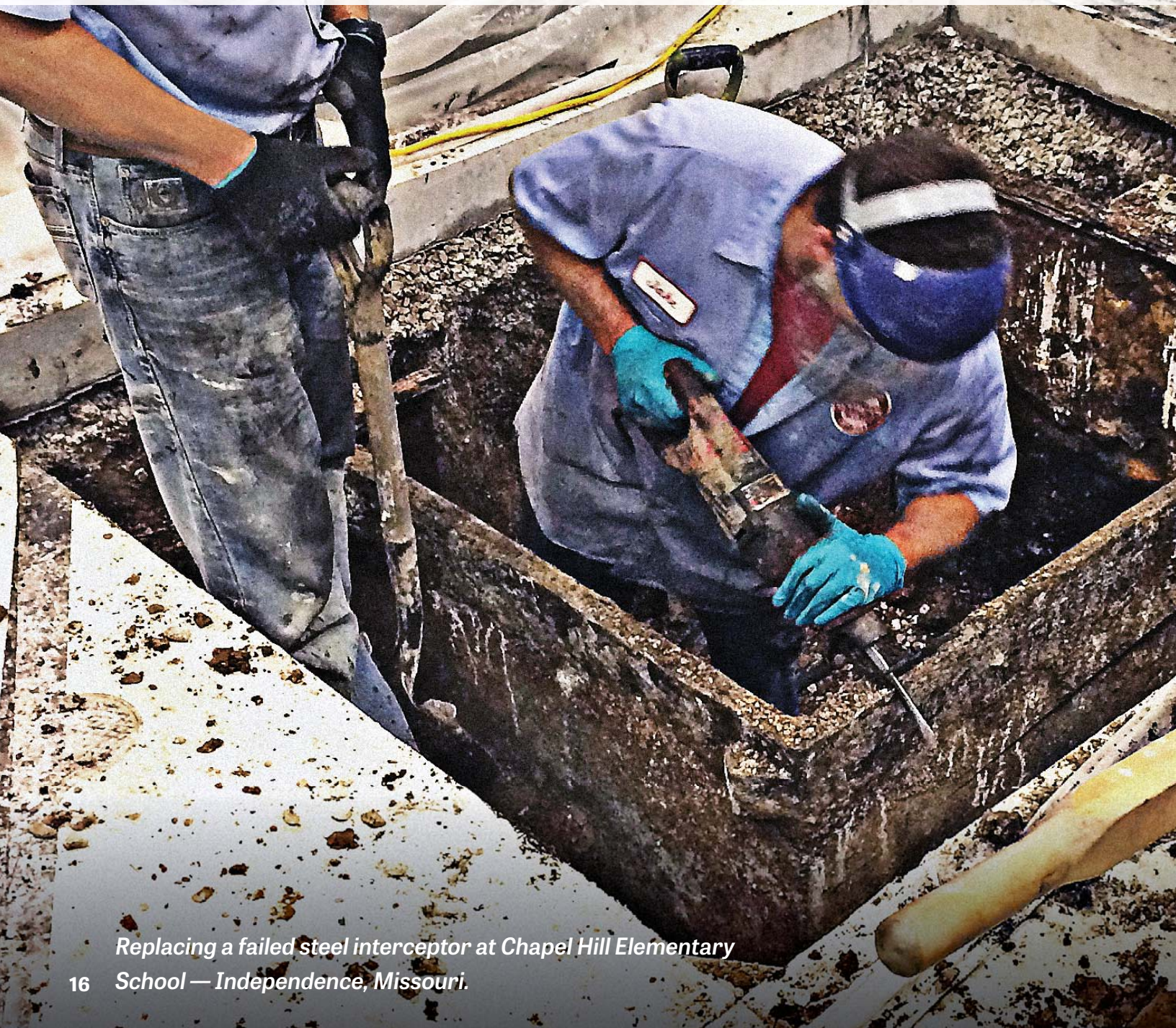


Great Basin™

high capacity grease interceptors

Steel.

Good for bridges, bad for interceptors.



Replacing a failed steel interceptor at Chapel Hill Elementary

16 School — Independence, Missouri.



5 Years typical steel lifespan

With the industry's only lifetime warranty, the Great Basin™ is perfect for replacing guaranteed-to-fail steel interceptors.

\$11,928 Lost*

Initial installation additional costs: **\$378**

5 years of extra pumpouts: **\$3,000**

Replacement cost after 5 years: **\$8,550**

* based on like Schier model alternative



Pizza Hut — Brookfield, Wisconsin.

*Great Basin*TM

high capacity grease interceptors

OTTER[®]

LUMBERS



Installs so fast your plumber might leave his truck running.

Low Profile or Buried

With a new low profile design, more installations can go on the floor eliminating costly burials

Rugged Cover Design

Bolted and gasketed polypropylene cover with molded in tread pattern and large 20" diameter accessway

Improved Body Design

Up to 3/8" thick polyethylene body with improved structural support and molded-in lift handles

Field Cut Riser System

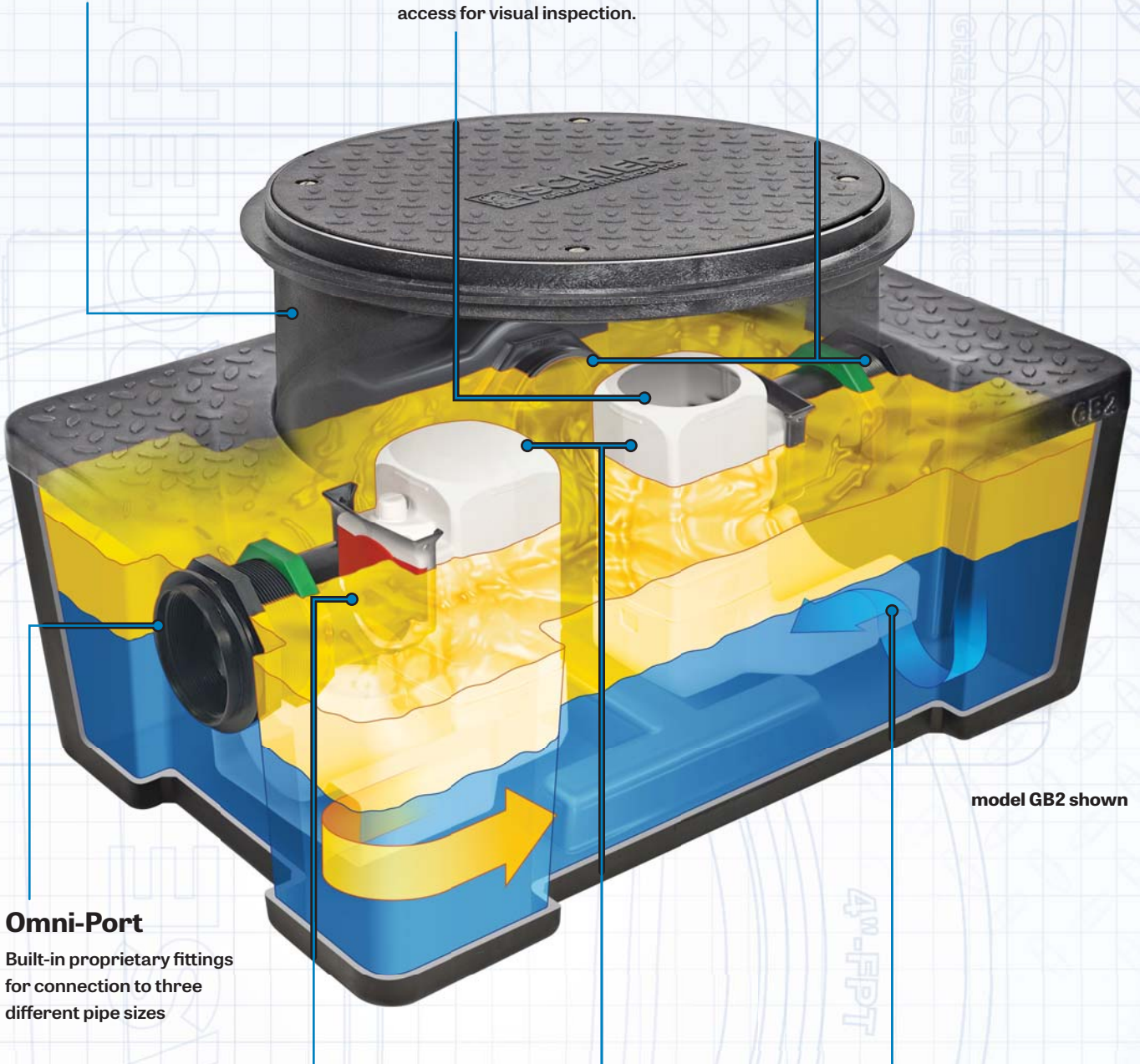
Optional riser system for buried installations up to 25"

Sewer Viewer™ Open Top Diffuser

Open top outlet diffuser provides access for visual inspection.

Built-In Triple Outlet

Saves time, space and piping



Omni-Port

Built-in proprietary fittings for connection to three different pipe sizes

Multiple Flow Rates

Each unit ships standard with two flow control plates and is certified to two flow rates

Built-In Flow Control

Saves up to 90 minutes of installation time versus units with external flow control

Improved Inlet & Outlet Diffusers

Removable from grade with slip fit design

Multi-Directional Outlet Bottom

Maintains certified flow pattern regardless of outlet position

Great Basin™

high capacity grease interceptors



Outdoor Installations

Introduced in 2006, Schier's lineup of outdoor Great Basin™ models has reshaped the industry by offering a hybrid grease interceptor that is not only crazy efficient but rugged enough to be installed outside in a heavy traffic area.



Great Basin™

high capacity grease interceptors

**Concrete.
Good for driveways, bad for interceptors.**





10 Years typical concrete lifespan

With the industry's only lifetime warranty, the Great Basin™ is perfect for replacing guaranteed-to-fail concrete interceptors.

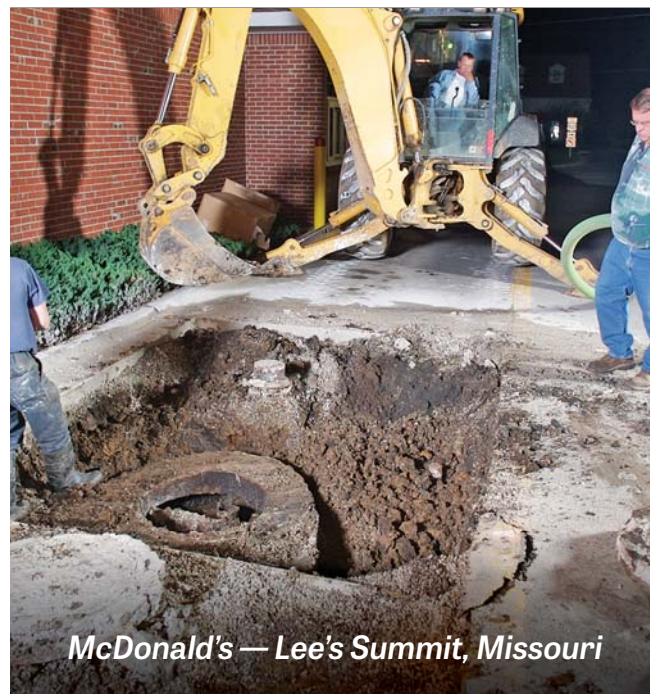
\$27,828 Lost*

Initial installation additional costs: **\$2,871**

10 years of extra pumpouts: **\$10,400**

Replacement cost after 10 years: **\$14,557**

* based on like Schier model alternative



McDonald's — Lee's Summit, Missouri



Great Basin™

high capacity grease interceptors

**Cancel the crane, and
be home by dinner.**

Rugged Body Design

Up to 1/2" thick polyethylene body with molded-in lift handles exceeds ASTM C890 structural requirements for traffic installations

Fits Through Doorways

With a maximum width of 33-1/2" the GB-75 and GB-250 fit through commercial doorways for interior installations

Field Cut Risers

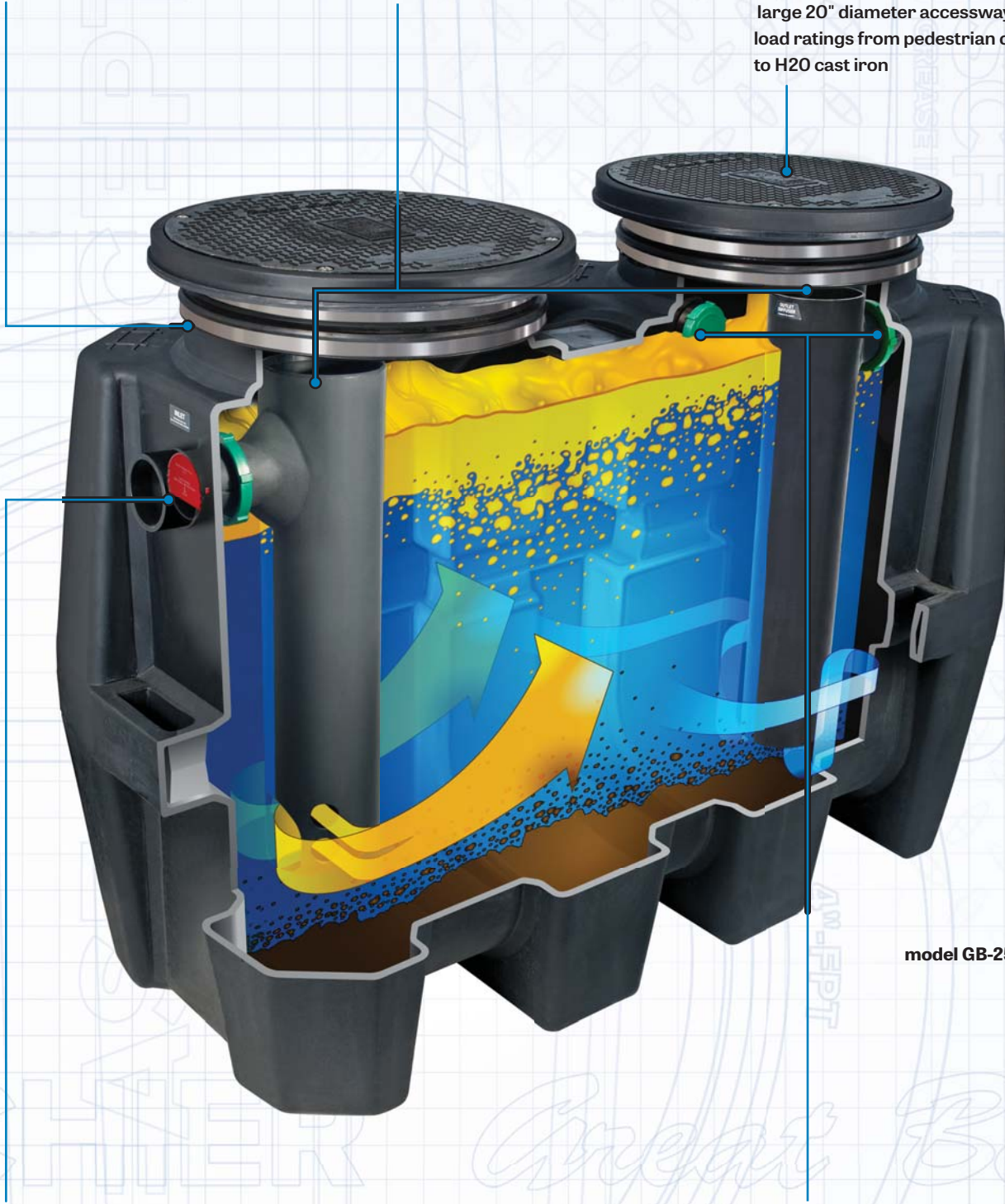
Optional risers for buried installations up to 72" (cover adapters included)

Sewer Viewer™ Open Top Diffusers

Provide 6" access for visual inspection

Covers for Every Application

With molded in tread pattern, large 20" diameter accessway, and load ratings from pedestrian composite to H20 cast iron



model GB-250 shown

Built-In Flow Control

For use in high flow scenarios

Built-In Triple Outlet

Saves time, space and piping

*Great Basin*TM

high capacity grease interceptors

We've got you covered.





Covers

Covers are provided with water/air tight gasket seal and are designed to fit tightly into a key-fit frame.



C21M

Location: indoor
Diameter: 21" (53.3 cm)
Type: bolted polypropylene
Pedestrian Load Rating: 1,000 lbs. (454 kg)
Models: GB1, GB2, GB3



C24M

Location: indoor
Diameter: 24" (61.0 cm)
Type: bolted composite
Pedestrian Load Rating: 2,000 lbs. (907 kg)
Models: GB-50, GB-75, GB-250



C24H

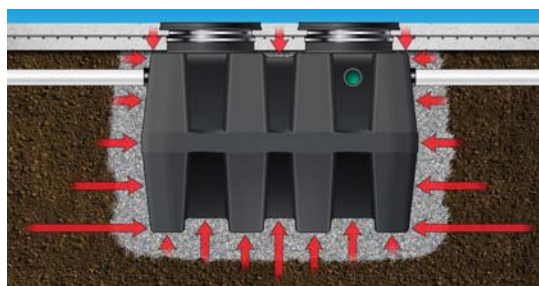
Location: outdoor/indoor
Diameter: 24" (61.0 cm)
Type: bolted composite
Traffic Load Rating: 16,000 lbs. (7,257 kg)
Models: GB-50, GB-75, GB-250, GB-1000, GGI-750, GGI-1500



C24HP

Location: outdoor
Diameter: 24" (61.0 cm)
Type: pickable cast iron
H2O Load Rating: 16,000 lbs. (7,257 kg)
Models: GB-50, GB-75, GB-250, GB-1000, GGI-750, GGI-1500

Built like a tank



Models GB-75 and GB-250 exceed structural loading design requirements of ASTM C890 for A-16 vehicle loading (AASHTO HS20).

A photograph showing two construction workers in safety gear (hard hats, high-visibility vests, work jackets, and gloves) working on a construction site. They are focused on installing a large, black, cylindrical grease interceptor into a concrete trench. One worker is leaning over the unit, while the other is assisting. The background shows a construction site with rebar and concrete forms. The Great Basin logo is overlaid in the top left corner.

Great Basin[™]

high capacity grease interceptors

Depth perfection.



Field cut risers

Eliminate jobsite downtime and custom riser costs with a simple, off-the-shelf and field modifiable design.

for indoor units



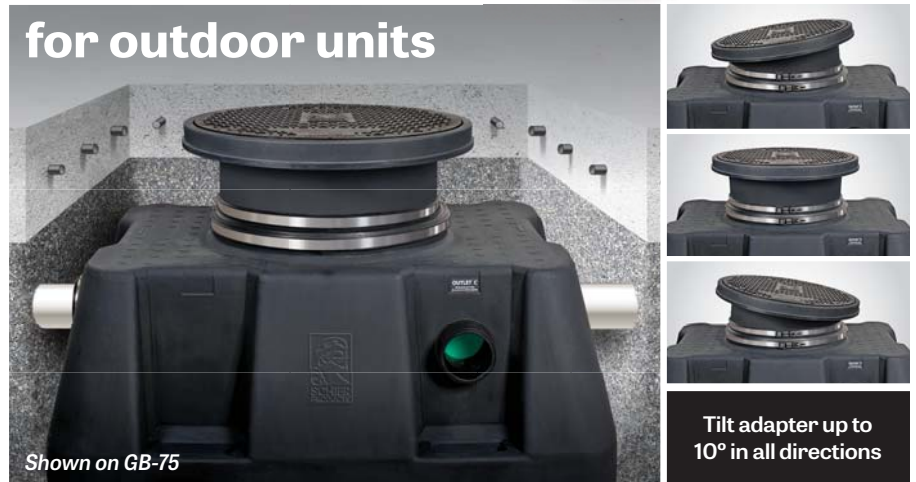
Models: GB1, GB2, GB3

Height Needed	Risers Required
2 1/8" - 12"	FCR1
>12" - 25"	FCR1 (x2)

FCR1



for outdoor units



Models: GB-50, GB-75, GB-250, GB-1000, GGI-750, GGI-1500, SV24

Height Needed	Risers Required*
0 - 3 1/2"	included via cover adapter
5" - 23"	SR24
>23" - 38"	LR24
>38" - 43"	SR24 (x2)
>43" - 58"	SR24 + LR24
>58" - 72"	LR24 (x2)

* per accessway; GB-50 max riser height is 38"

LR24

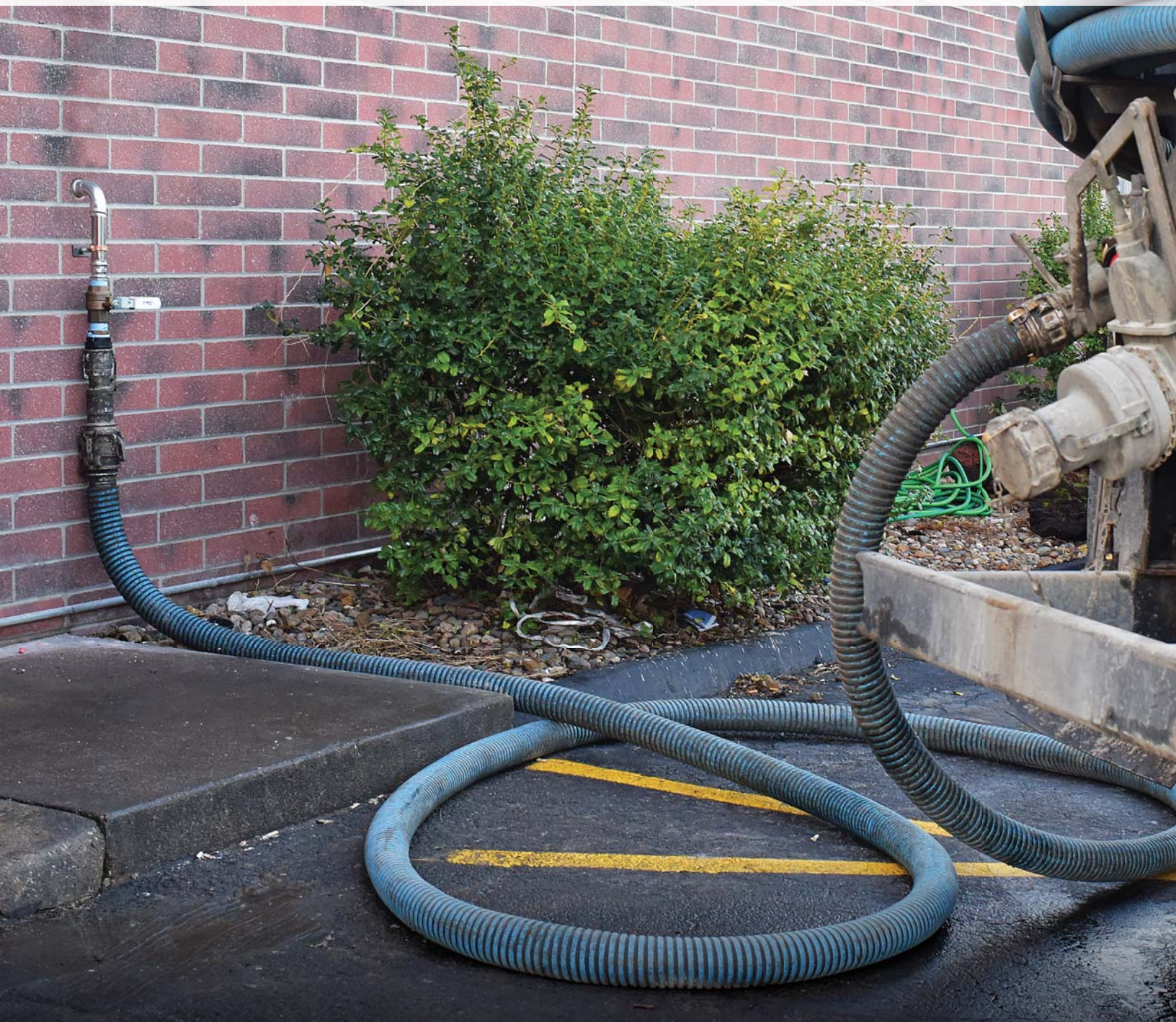
SR24



*Great Basin*TM

high capacity grease interceptors

Don't get hosed.





Pumpout ports

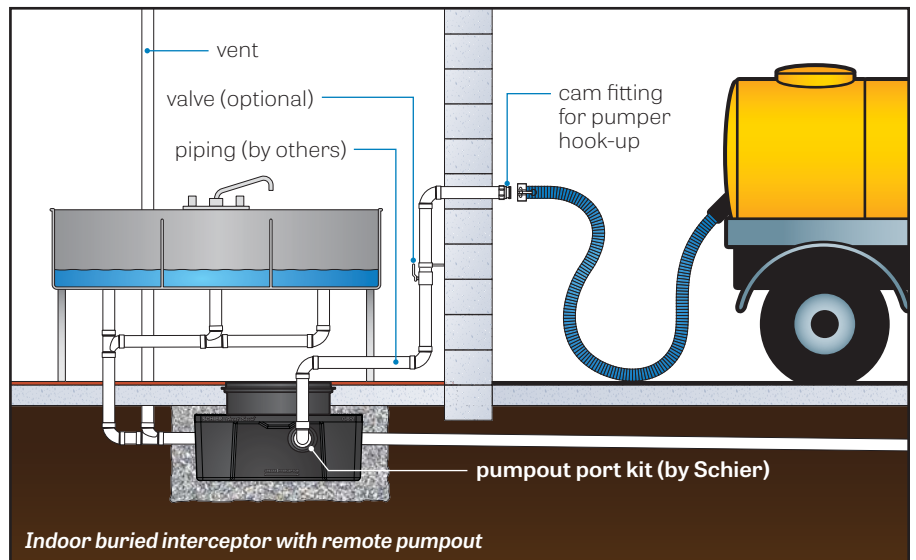
Make disease-ridden hoses and putrid smells inside your kitchen a thing of the past. Outfit your Great Basin™ with a pumpout port for remote cleaning during normal business hours.



Typical pumper hose on kitchen floor during pumpout.



Proprietary low profile elbow connects to any of the unused outlets (model PP1 shown on GB2).

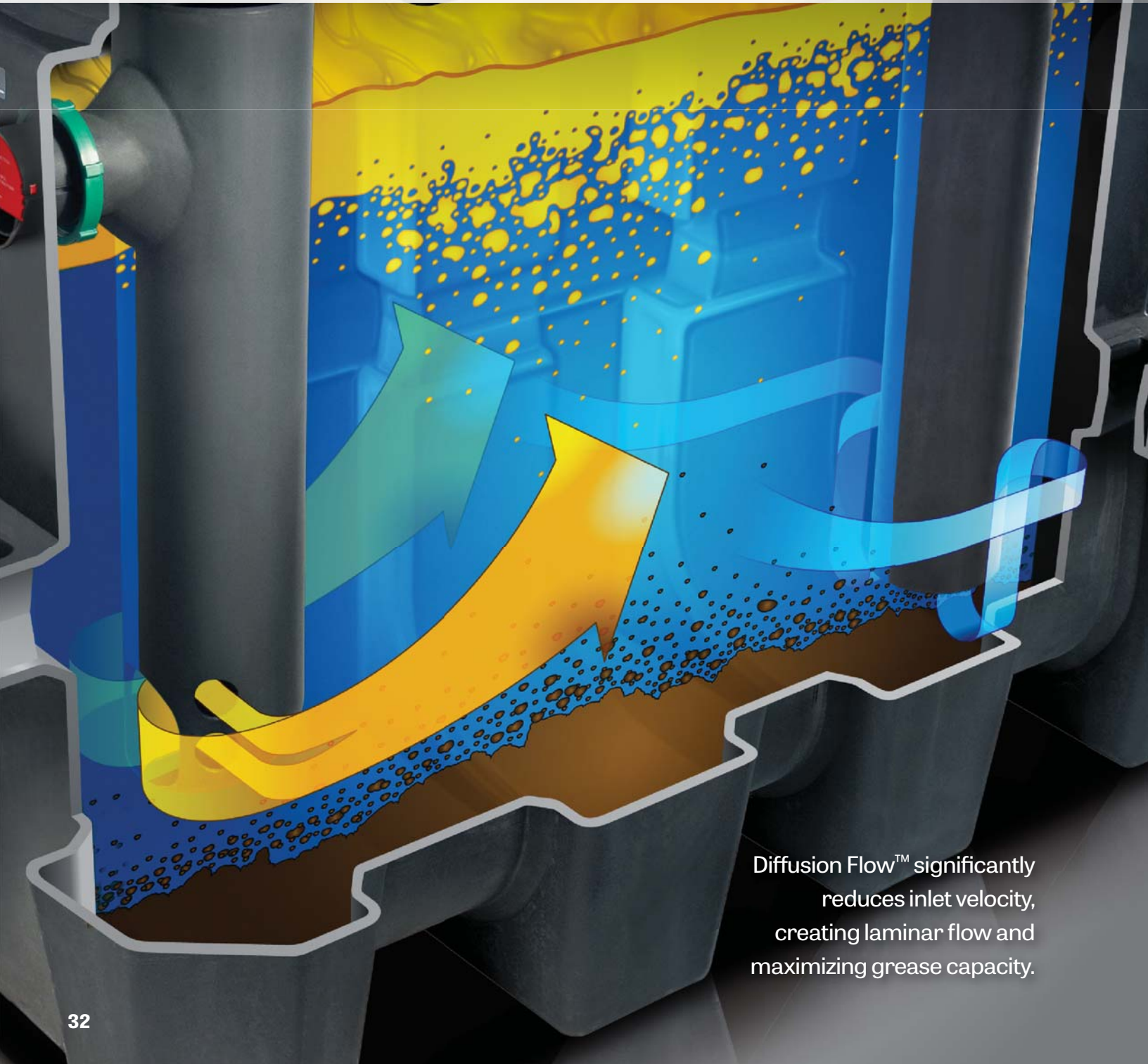


Indoor buried interceptor with remote pumpout

Great Basin™

high capacity grease interceptors

Big grease. Small footprint.



Diffusion Flow™ significantly reduces inlet velocity, creating laminar flow and maximizing grease capacity.

Schier Engineering Technician dewatering effluent during performance testing.

Summary of Great Basin™ Performance

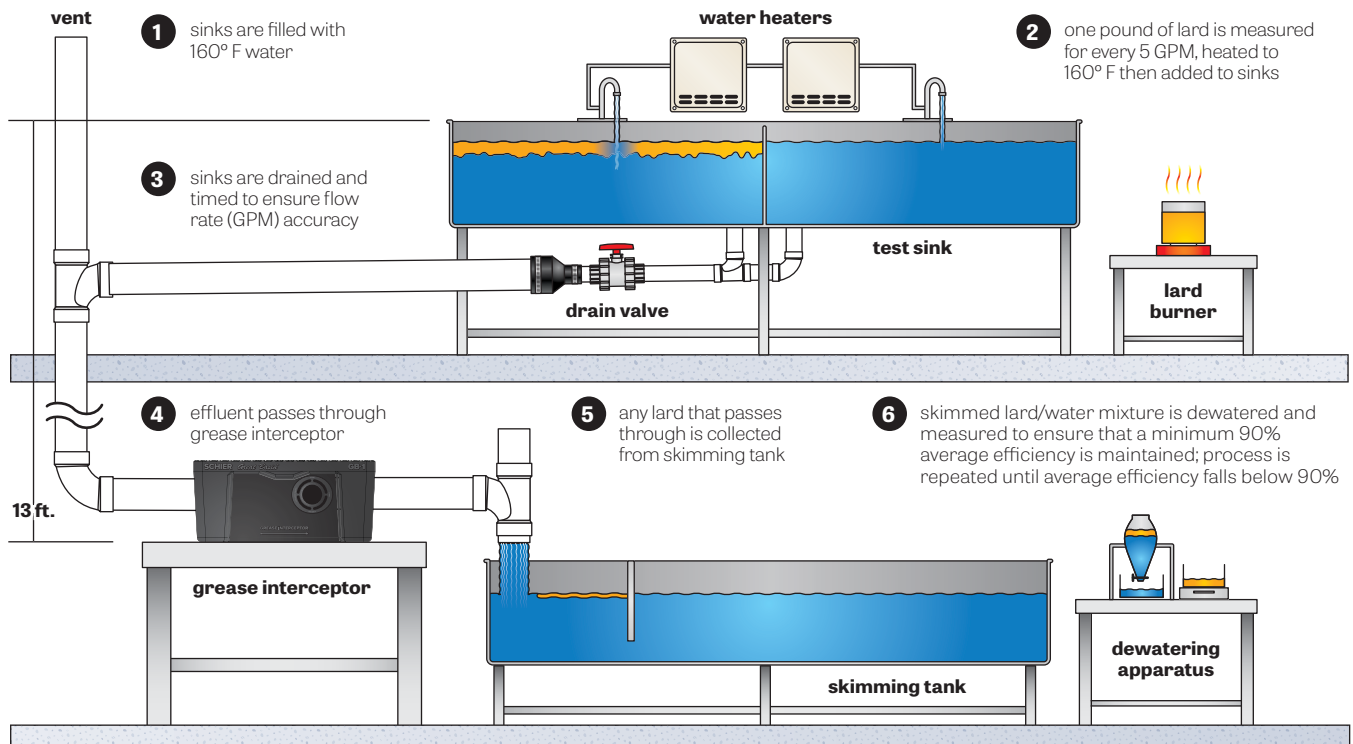
For complete versions of Great Basin™ ASME/CSA lab tests, visit schierproducts.com

model	flow rate - GPM (L/s)	total liquid volume - gal. (L)	min. grease requirement - lbs. (kg)	grease retained - lbs. (kg)	total liquid height - in. (mm)	total grease height - in. (mm)
GB1	20 (1.3)	10 (37.9)	40 (18.1)	70 (31.8)	5.25 (133)	5 (127)
	25 (1.6)	10 (37.9)	50 (22.7)	64 (29.0)	5.25 (133)	4.6 (117)
GB2	35 (2.2)	20 (75.7)	70 (31.8)	130 (59.0)	7 (178)	6.25 (159)
	50 (3.2)	20 (75.7)	100 (45.4)	127 (57.6)	7 (178)	6.1 (155)
GB3	50 (3.2)	40 (151.4)	100 (45.4)	272 (123.4)	13.75 (349)	12.8 (325)
	75 (4.7)	40 (151.4)	150 (68.0)	175 (79.4)	13.75 (349)	8.25 (210)
GB-50	50 (3.2)	52 (196.5)	100 (45.4)	249 (112.9)	16 (406)	9.1 (231)
GB-75	75 (4.7)	125 (473.2)	150 (68.0)	653 (296.2)	24 (610)	16.6 (422)
GB-250	100 (6.3)	275 (1,041.0)	200 (90.7)	1,751 (794.2)	36 (914)	30.0 (762)
	200 (12.6)	275 (1,041.0)	400 (181.4)	1,196 (542.5)	36 (914)	20.0 (508)
GB-1000	100 (6.3)	1,010 (3,823.3)	200 (90.7)	6,547 (2,969.7)	54 (1,372)	42.0 (1,067)



All models listed by IAPMO to ASME A112.14.3 and CSA B481.1. See Schier listing at pld.iapmo.org/file_info.asp?file_no=0005317

ASME A112.14.3/CSA B481.1 Test Procedure





Grease Production Sizing™

First introduced in 2012, Schier's Grease Production Sizing™ (GPS) has been used to size over 30,000 restaurant grease interceptors, has been adopted by several municipalities, published in the 2016 edition of ASPE's *Plumbing Engineering Design Handbook* and now powers our Grease Monkey™ sizing tool (see following page).

Step 1: Size by Flow Rate

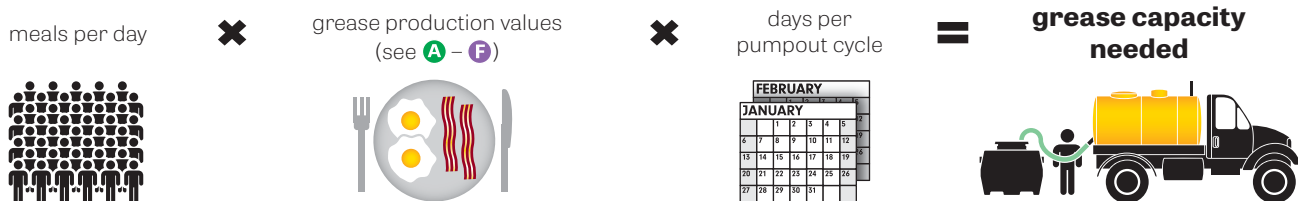
hydromechanical grease interceptor sizing using gravity flow rates (per Ch. 10 of the Uniform Plumbing Code)

diameter of grease waste pipe	maximum full pipe flow*	size of grease interceptor	
		one-minute drainage period	two-minute drainage period
2"	20 GPM	20 GPM	10 GPM
3"	60 GPM	75 GPM	35 GPM
4"	125 GPM	150 GPM	75 GPM
5"	230 GPM	250 GPM	125 GPM
6"	375 GPM	500 GPM	250 GPM

*1/4 inch slope per foot based on Manning's formula with friction factor N = 0.012.



Step 2: Select Grease Capacity for Pumpout Frequency



Foodservice Establishment (FSE) Grease Production Values

category	grease production values	description / examples
low	A 0.005 lbs / meal (no flatware)	serves food prepared offsite or food that requires minimal preparation and/or warming; sandwich shop, convenience store (no kitchen), hotel breakfast bar, frozen yogurt, coffee shop, take & bake pizza, bar (limited food service), cafeteria (no prep), grocery meat department, sushi (no grill)
	B 0.0065 lbs / meal (with flatware)	
medium	C 0.025 lbs / meal (no flatware)	serves foods from a limited menu and/or with a limited amount of onsite preparation; pizza, ice cream parlor; fast food hamburger (pre-cooked), caterer; Greek, Japanese, Vietnamese (Pho), grocery store (no fryer), cafeteria (limited prep), low category restaurants w/ fryer
	D 0.0325 lbs / meal (with flatware)	
high	E 0.035 lbs / meal (no flatware)	serves a full menu of food prepared onsite; American traditional, hamburger (with grill), BBQ, Mexican, Italian, steak/seafood house, hibachi, buffet, fast food fried chicken, bakery/donut shop (w/fryer), Chinese, Indian, grocery store (w/ fryer), cafeteria (full prep), medium category restaurants w/ fryer
	F 0.0455 lbs / meal (with flatware)	

Please note that GPS may not satisfy local jurisdictional requirements for installation approval and should always be verified prior to selection. The easiest way to verify sizing for any project is to use our Grease Monkey™ sizing tool and select the "pre-approve" option.



GM GREASE MONKEY™

Grease Interceptor Sizing Service

There's just no shortcut to correctly size a grease interceptor...
until now.

The new Grease Monkey™ sizing tool guides you quickly through all aspects of sizing, produces a printable and shareable sizing report and comes with our complimentary pre-approval service in which we double-check your work and confirm local code approval for your grease interceptor installation.

url: schierproducts.com/pages/sizing



GB1

20/25 GPM indoor grease interceptor



Standard

Location: indoor

Installation: above/below grade

Flow Rates / Grease Capacities:

20 GPM (1.3 L/s) / 70 lbs. (31.8 kg)

25 GPM (1.6 L/s) / 64.9 lbs. (29.4 kg)

Liquid Capacity: 10 gal. (37.9 L)

Weight: 39 lbs. (17.7 kg)

Connections: 4" (100 mm) FPT inlet/outlet with 4" x 3" (100 mm x 75 mm) FPT fittings and 3" x 2" (75 mm x 50 mm) FPT fittings

Cover: bolted gas/water tight polypropylene with 1,000 lb. load rating when unit is buried with FCRI riser



listed by IAPMO to ASME A112.14.3 and CSA B4811.

Accessories

FCRI: field cut riser

CC1: membrane clamping collar kit (requires FCRI riser)

PP1: pumpout port kit

GB2

35/50 indoor GPM grease interceptor



Standard

Location: indoor

Installation: above/below grade

Flow Rates / Grease Capacities:

35 GPM (2.2 L/s) / 130.5 lbs. (59.2 kg)

50 GPM (3.2 L/s) / 127.6 lbs. (57.9 kg)

Liquid Capacity: 20 gal. (75.7 L)

Weight: 49 lbs. (22.2 kg)

Connections: 4" (100 mm) FPT inlet/outlet
with 4" x 3" (100 mm x 75 mm) FPT fittings

Cover: bolted gas/water tight polypropylene with 1,000 lb. load rating when unit is buried with FCRI riser



listed by IAPMO to ASME A112.14.3 and CSA B481.

Accessories

FCRI: field cut riser

CC1: membrane clamping collar kit (requires FCRI riser)

PP1: pumpout port kit

F32: 3" x 2" (75 x 50 mm) FPT fittings (x2)

Also available in 25 GPM configuration. See GB2-CT online for more details.

GB3

50/75 GPM indoor grease interceptor



Standard

Location: indoor

Installation: above/below grade

Flow Rates / Grease Capacities:

50 GPM (3.2 L/s) / 272.7 lbs. (123.7 kg)

75 GPM (4.7 L/s) / 175.6 lbs. (79.7 kg)

Liquid Capacity: 40 gal. (151.4 L)

Weight: 69 lbs. (31.3 kg)

Connections: 4" (100 mm) FPT inlet/outlet

with 4" x 3" (100 mm x 75 mm) FPT fittings

Cover: bolted gas/water tight polypropylene with 1,000 lb. load rating when unit is buried with FCRI riser



listed by IAPMO to ASME A112.14.3 and CSA B481.1.

Accessories

FCRI: field cut riser

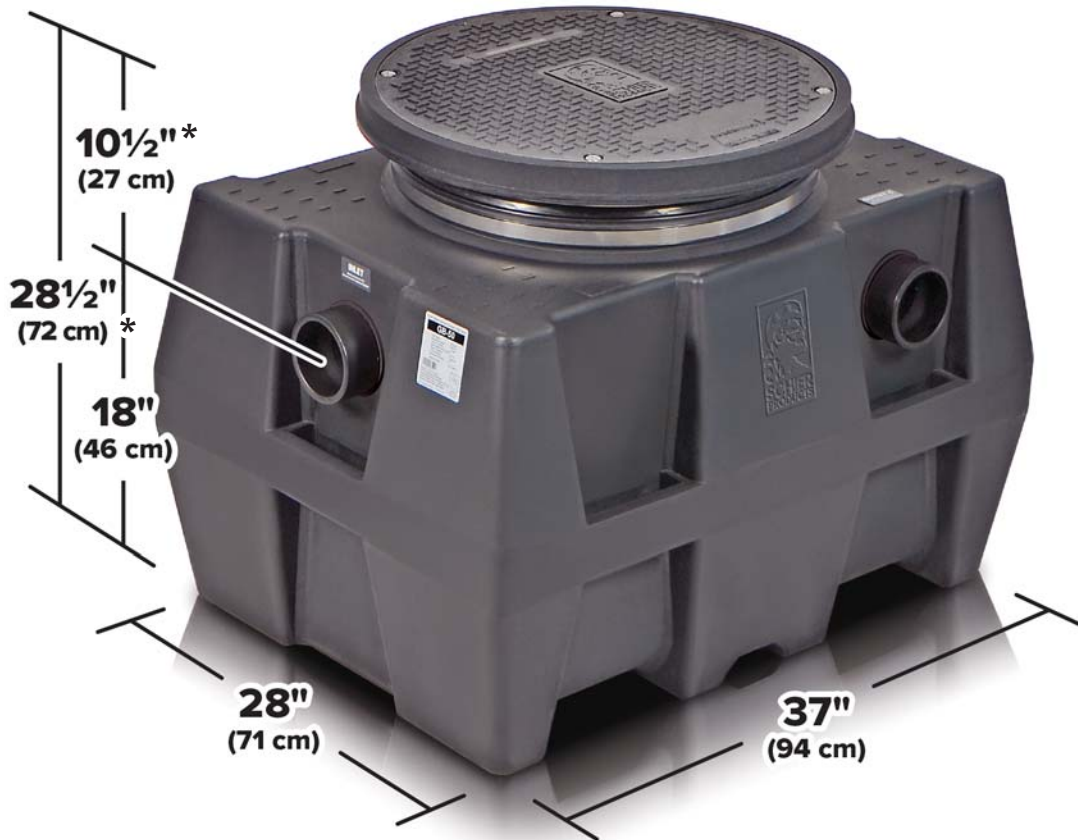
CC1: membrane clamping collar kit (requires FCRI riser)

PP1: pumpout port kit

F32: 3" x 2" (75 x 50 mm) FPT fittings (x2)

GB-50

50 GPM indoor/outdoor grease interceptor



* Add up to 3 1/2" when adapter is elevated

Standard

Location: outdoor/indoor

Installation: above/below grade

Flow Rate / Grease Capacity:

50 GPM (3.2 L/s) / 249 lbs. (112.9 kg)

Liquid Capacity: 52 gal. (196.5 L)

Weight: 92 lbs. (41.7 kg)

Connections: 4" (100 mm) plain end inlet/outlet

Cover: bolted gas/water tight composite with 16,000 lbs. load rating



listed by IAPMO to ASME A112.14.3 and CSA B4811.

Options

C24H: highway rated composite cover

C24M: pedestrian rated composite cover

4" (100 mm) MPT inlet/outlet

3" (75 mm) plain end inlet/outlet

3" (75 mm) MPT inlet/outlet

Accessories

AK1: high water anchor kit

SR24: short riser

LR24: long riser

CC24: integral membrane clamping collar kit

PP2: pumpout port kit

GB-75

75 GPM indoor/outdoor grease interceptor



* Add up to 3 1/2" when adapter is elevated

Standard

Location: outdoor/indoor

Installation: above/below grade

Flow Rate / Grease Capacity:

75 GPM (4.7 L/s) / 653 lbs. (296.2 kg)

Liquid Capacity: 125 gal. (473.2 L)

Weight: 130 lbs. (59.0 kg)

Connections: 4" (100 mm) plain end inlet/outlet

Cover: bolted gas/water tight composite with 16,000 lb. load rating



listed by IAPMO to ASME A112.14.3 and CSA B481.1.

Options

C24HP: H2O rated pickable cast iron cover

C24M: pedestrian rated composite cover

4" (100 mm) MPT inlet/outlet

6" (150 mm) plain end inlet/outlet

6" (150 mm) MPT inlet/outlet (stainless steel)

Accessories

AK1: high water anchor kit

SR24: short riser

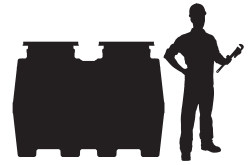
LR24: long riser

CC24: integral membrane clamping collar kit

PP2: pumpout port kit

GB-250

100/200 GPM indoor/outdoor grease interceptor



* Add up to 3 1/2" when adapter is elevated

Standard

Location: outdoor/indoor

Installation: above/below grade

Flow Rate / Grease Capacity:

100 GPM (6.3 L/s) / 1,751 lbs. (794.2 kg)

200 GPM (12.6 L/s) / 1,196 lbs. (542.5 kg)

Liquid Capacity: 275 gal. (1,040.0 L)

Weight: 230 lbs. (104.3 kg)

Connections: 4" (100 mm) plain end inlet/outlet

Cover: bolted gas/water tight composite with 16,000 lb. load rating

Options

C24HP: H2O rated pickable cast iron cover

C24M: pedestrian rated composite cover

4" (100 mm) MPT inlet/outlet

6" (150 mm) plain end inlet/outlet

6" (150 mm) MPT inlet/outlet (stainless steel)

Accessories

AK1: high water anchor kit

SR24: short riser

LR24: long riser

CC24: integral membrane clamping collar kit

PP2: pumpout port kit



listed by IAPMO to ASME A112.14.3 and CSA B481.1.

GB-1000

100 GPM outdoor grease interceptor



* Add up to 3½" when adapter is elevated

Standard

Location: outdoor

Installation: buried

Flow Rate / Grease Capacity:

100 GPM (6.3 L/s) / 6,547 lbs. (2,969.7 kg)

Liquid Capacity: 1,010 gal. (3,823.3 L)

Weight: 1,400 lbs. (635.0 kg)

Connections: 6" (150 mm) plain end inlet/outlet

Cover: bolted gas/water tight composite with 16,000 lb. load rating

Options

C24HP: H2O rated pickable cast iron cover

6" (150 mm) MPT inlet/outlet (stainless steel)

4" (100 mm) plain end inlet/outlet

Accessories

SR24: short riser

LR24: long riser



listed by IAPMO to ASME A112.14.3 and CSA B481.1.



Big Foot™
gravity grease interceptors

School Cafeteria — Albuquerque, New Mexico

Recommended for use when gravity grease interceptors are required. Some local ordinances specifically use volume based sizing with no process for alternate approval. Big Foot™ interceptors are offered in rugged polyethylene construction for buried applications only.

GGI-750

750 gal. gravity grease interceptor



* Add up to 3 1/2" when adapter is elevated

Standard

Location: outdoor

Installation: buried

Flow Rate / Grease Capacity:

314 GPM (19.8 L/s) / 810 lbs. (367.4 kg)

Liquid Capacity: 750 gal. (2,839.1 L)

Weight: 1,200 lbs. (544.3 kg)

Connections: 6" (150 mm) plain end inlet/outlet

Cover: bolted gas/water tight composite with 16,000 lb. load rating

Designed in conformance with IAPMO/ANSI Z1001.

Options

C24HP: H2O rated pickable cast iron cover

6" (150 mm) MPT inlet/outlet (stainless steel)

4" (100 mm) plain end inlet/outlet

Accessories

SR24: short riser

LR24: long riser

GGI-1500

1500 gal. gravity grease interceptor



* Add up to 3½" when adapter is elevated

Standard

Location: outdoor

Installation: buried

Flow Rate / Grease Capacity:

314 GPM (19.8 L/s) / 1,620 lbs. (734.8 kg)

Liquid Capacity: 1,500 gal. (5,678.1 L)

Weight: 1,700 lbs. (771.1 kg)

Connections: 6" (150 mm) plain end inlet/outlet

Cover: bolted gas/water tight composite with 16,000 lb. load rating

Designed in conformance with IAPMO/ANSI Z1001.

Options

C24HP: H2O rated pickable cast iron cover

6" (150 mm) MPT inlet/outlet (stainless steel)

4" (100 mm) plain end inlet/outlet

Accessories

SR24: short riser

LR24: long riser

Sewer Viewer™
sampling ports

Take a peek under the hood.



Model GB-250 with Sewer Viewer™ open top outlet diffuser

46 being used as an internal sampling port

Sampling ports

All Great Basin™ and Big Foot™ grease interceptors include Sewer Viewer™ open top outlet diffusers to provide access for visual inspection. Where physical testing is required, use one of our downstream Sewer Viewer™ sampling ports.



SV4-04 installed downstream from a GB3

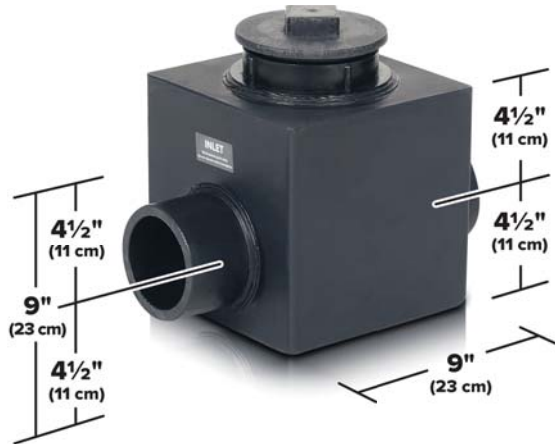


SV24-04 installed downstream from a GB-250

SV4-L4



above grade sampling port
with level connections



Standard

Location: indoor

Installation: above grade

Weight: 5 lbs. (2.3 kg)

Configuration: level connections

Connections: 4" (100 mm) plain end inlet/outlet

Accessway: 4" (100 mm) threaded port

Options

4" (100 mm) MPT inlet/outlet

2" (50 mm) plain end inlet/outlet

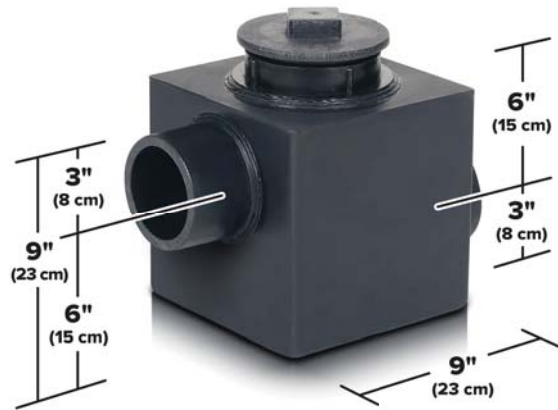
3" (75 mm) plain end inlet/outlet

6" (150 mm) plain end inlet/outlet (N/A with offset connections)

SV4-O4



above grade sampling port
with offset connections



Standard

Location: indoor

Installation: above grade

Weight: 5 lbs. (2.3 kg)

Configuration: offset connections

Connections: 4" (100 mm) plain end inlet/outlet

Accessway: 4" (100 mm) threaded port

Options

4" (100 mm) MPT inlet/outlet

2" (50 mm) plain end inlet/outlet

3" (75 mm) plain end inlet/outlet

SV24-L4



above/below grade sampling port with level connections



* add up to 3" when adapter is elevated

Standard

Location: indoor/outdoor
Installation: above/below grade
Weight: 65 lbs. (29.5 kg)
Configuration: level connections
Connections: 4" (100 mm) plain end inlet/outlet
Accessway: 20" (500 mm)
Cover: bolted gas/water tight composite with 16,000 lb. load rating

Options

C24HP: H2O rated pickable cast iron cover
4" (100 mm) MPT inlet/outlet
6" (150 mm) plain end inlet/outlet

Accessories

SR24: short riser
LR24: long riser

SV24-O4



above/below grade sampling port with offset connections



* add up to 3" when adapter is elevated

Standard

Location: indoor/outdoor
Installation: above/below grade
Weight: 65 lbs. (29.5 kg)
Configuration: offset connections
Connections: 4" (100 mm) plain end inlet/outlet
Accessway: 20" (500 mm)
Cover: bolted gas/water tight composite with 16,000 lb. load rating

Options

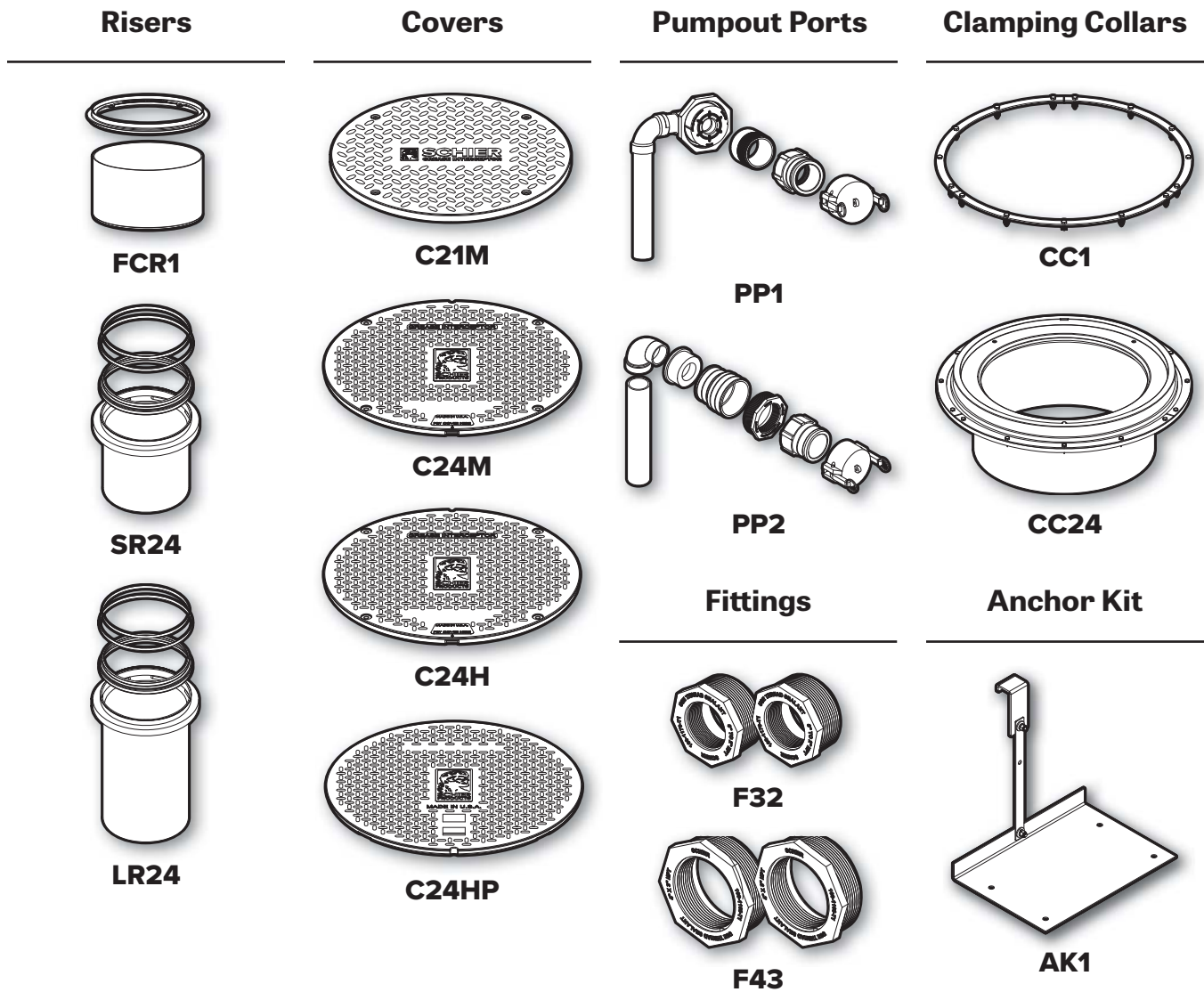
C24HP: H2O rated pickable cast iron cover
4" (100 mm) MPT inlet/outlet
6" (150 mm) plain end inlet/outlet

Accessories

SR24: short riser
LR24: long riser

Accessories

The following accessories may accompany base models at the time of purchase or separately. Covers for every application. Pumpout Ports for remote cleaning during normal business hours. Membrane clamping collars for recessed and suspended units. Fittings for jobsite piping. Stainless steel anchor kit to prevent float out in exterior installation locations with high water tables*. See compatibility chart to identify which accessories are available with according base models.



* These areas include, but are not limited to, tidal surge areas, floodplains and areas that receive storm water.

Compatibility	GB1	GB2	GB3	GB-50	GB-75	GB-250	GB-1000	GGI-750	GGI-1500	SV24-L4/O4
Risers										
FCR1	●	●	●							
SR24				●	●	●	●	●	●	●
LR24				●	●	●	●	●	●	●
Covers										
C21M	○	○	○							
C24M				●	●	●				●
C24H				○	○	○	○	○	○	○
C24HP				●	●	●	●	●	●	●
Pumpout Port Kits										
PP1	●	●	●							
PP2				●	●	●				
Clamping Collars										
CC1	●	●	●							
CC24				●	●	●				
Anchor Kit										
AK1				●	●	●				
Fittings										
F32	○	●	●							
F43	○	○	○							

● Additional ○ Standard



9500 Woodend Road | Edwardsville, KS 66111

LIFETIME GUARANTEED GREASE INTERCEPTORS

schierproducts.com



Visit our website for technical data, official product certifications and testing reports, pricing and more.

inquiry@schierproducts.com
tel: 1-913-951-3300

C-0718-ENG

© Copyright 2018 Schier. All Rights Reserved