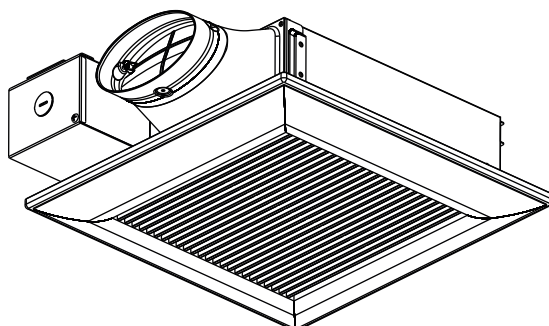


Service Manual

Ventilating Fan
(North America Market)



FV-0510VS1

⚠ WARNING

This service information is designed for experienced repair technicians only and is not designed for use by the general public. It does not contain warnings or cautions to advise non-technical individuals of potential dangers in attempting to service a product. Products powered by electricity should be serviced or repaired only by experienced professional technicians. Any attempt to service or repair the product or products dealt with in this service information by anyone else could result in serious injury or death.

IMPORTANT SAFETY NOTICE

There are special components used in this equipment which are important for safety. These parts are marked by ⚠ in the Schematic Diagrams, Exploded Views and Replacement Parts List. It is essential that these critical parts should be replaced with manufacturer's specified parts to prevent shock, fire or other hazards. Do not modify the original design without permission of manufacture.

We suggest to handle such parts after the static electricity prevention.

It is forbidden to touch the PCB parts by bare hands during the repairing process.

CONTENTS	PAGE
1.Specifications-----	1
2.Parts Identification-----	2~3
3.Wiring Diagram-----	4
4.Parts List-----	5

1. Specifications

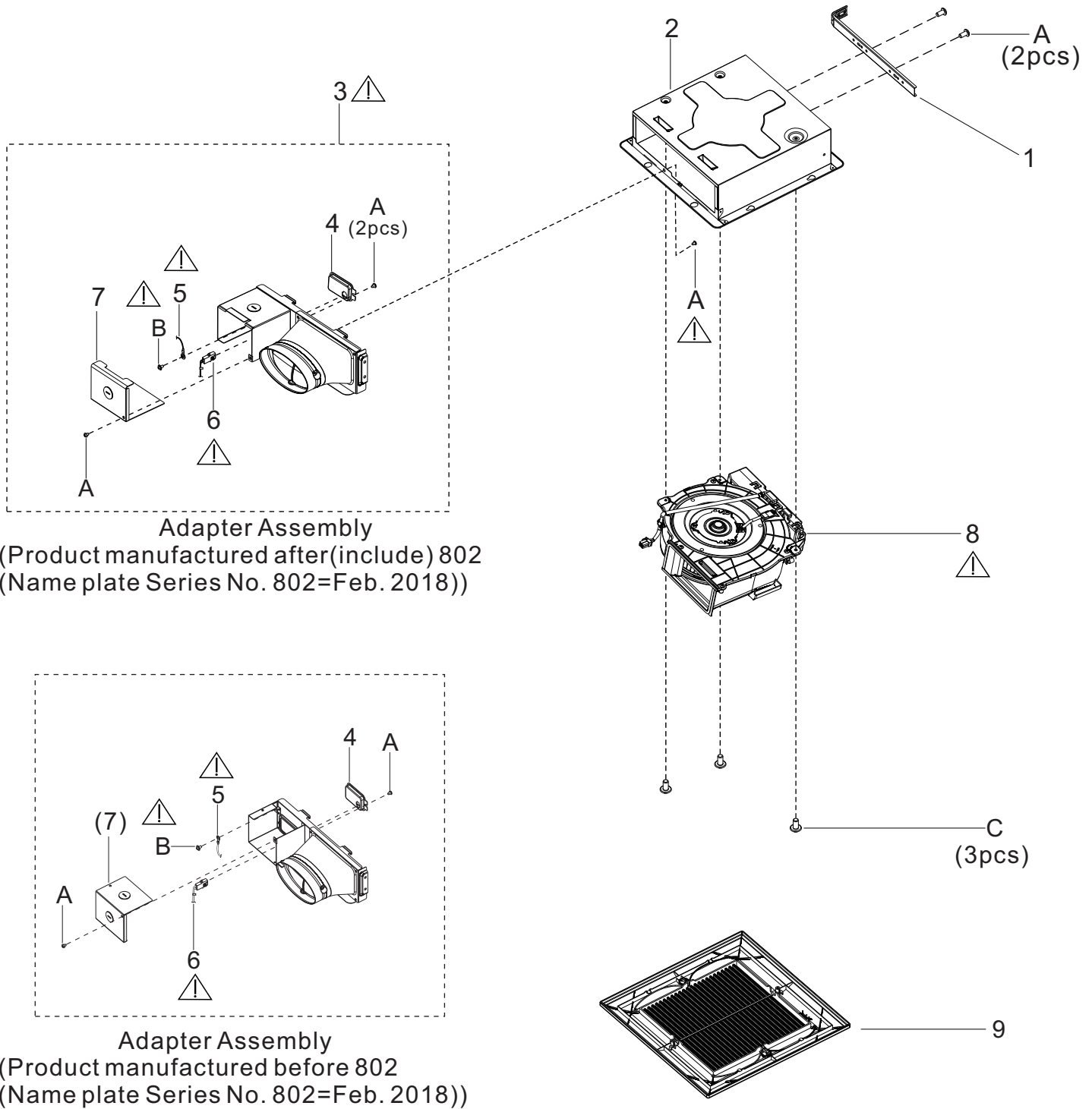
Model No.	Air direction	Voltage (V)	Frequency (Hz)	Duct diameter (inches)	Air volume at 0.1" WG (CFM)	Noise (sones)	Speed (rpm)	Power (W)	Weight lb.(kg)
FV-0510VS1	Exhaust	120	60	4	50	<0.3	708	4.4	6.8 (3.1)
					80	0.4	797	7.2	
					100	0.9	902	11.1	

HVI Certified performance based on HVI Procedures 915, 916, and 920.

2. Parts Identification

FV-0510VS1

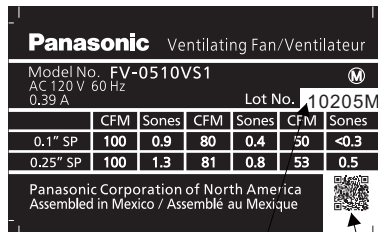
Main Body Section



2. Parts Identification

FV-0510VS1

Main Labels



10

1 Means Year: 2021
02 Means Month
05 Means Day
M In House Motor

QR CODE
(Model No. & Serial No.)

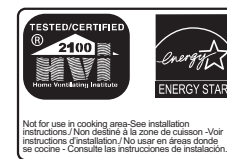
ATTENTION

Circuit board assembly inside, do not drill the can/housing. For details, please refer to installation instructions.

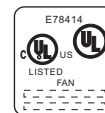
ATTENTION

Carte de circuit imprimé à l'intérieur, ne percez pas le boîtier. Pour plus de détails, consultez les instructions d'installation.

11

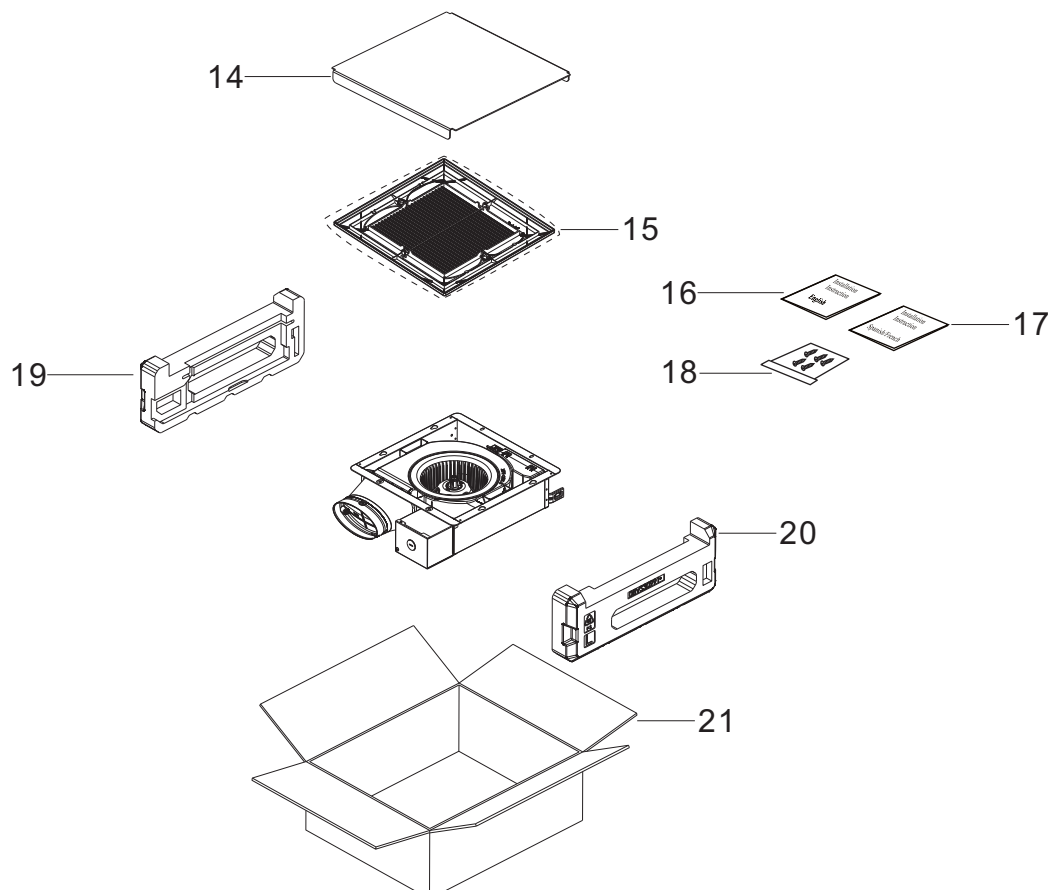


12



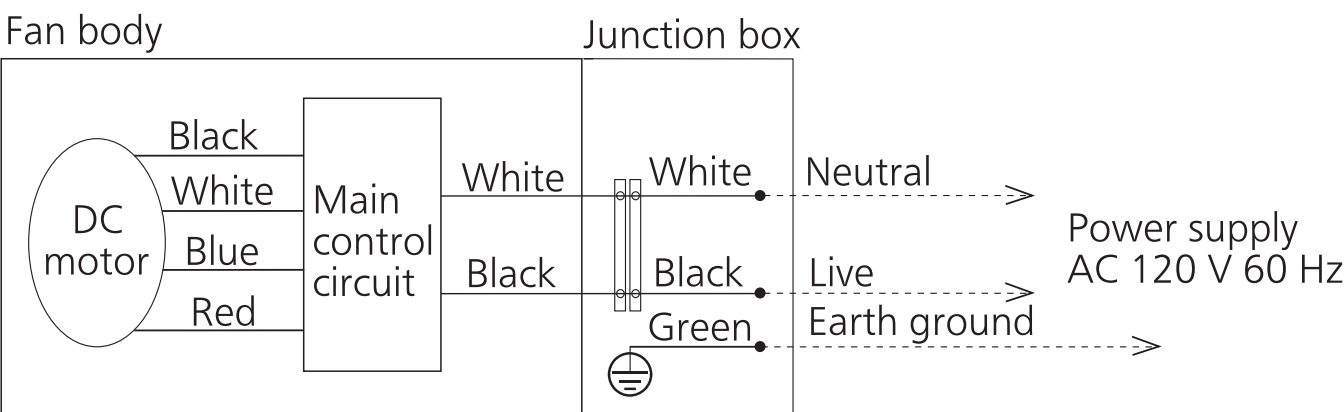
13

Packing Section



3. Wiring Diagram

FV-0510VS1



4. Parts List

FV-0510VS1

Main Body Section

No.	Part No.	Part Name	Q'ty	Remark
1	FFV5710025S	Suspension Bracket	1	
2	FFV1600159S	Frame Assy	1	
3	FFV0000166S	Adapter Assy	1	⚠
4	FFV0900052S	Connector Plate	1	
5	FFV3450010S	Earth Lead Wire	1	⚠
6	FFV0900072S	Connector Assy(V)	1	⚠
7	FFV2800027S	Junction Cover	1	Product manufactured after(include) 802(Name plate Series No. 802=Feb.2018)
(7)	FFV2800020S	Junction Cover	1	Product manufactured before 802(Name plate Series No. 802=Feb. 2018)
8	FFV0510VS1M	Casing Section	1	⚠
9	FFV3400146S	Louver Assy	1	
A	FFV7000108S	Truss Tap Screw	5	⚠
B	FFV7000227S	Earth Screw Assy	1	Include Spring Washer ⚠
C	FFV7000202S	Bind Tap Screw	3	

Main Labels

No.	Part No.	Part Name	Q'ty	Remark
10	FFV510VS115	Name Plate	1	
11	FFV6730110S	Warning Label	1	
12	FFV0810011S	Caution Label 1	1	
13	FFV2260003S	UL Mark	1	

Packing Section

No.	Part No.	Part Name	Q'ty	Remark
14	FFV4710381S	Louver Case Assy	1	
15	FFV4650016S	Poly Cover	1	
16	FFV510VS142	Installation Instructions	1	English / Spanish, For USA Market
17	FFV510VS121	Installation Instructions	1	English / French, For Canada Market
18	FFV0010231S	Accessory A	1	
19	FFV4710369S	Right Pad	1	
20	FFV4710370S	Left Pad	1	
21	FFV9001231S	Packing Case Assy	1	