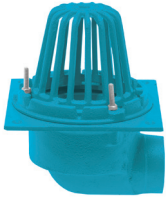


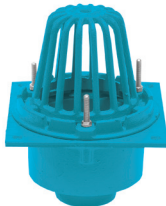


Roof Drains

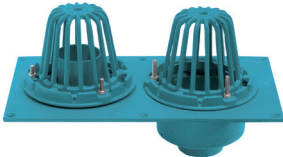
The Roof Drain must be designed to drain off rain water in the most effective manner possible while maintaining an aesthetic appeal. To select the proper roof drain, the following information must be determined: type of roof constructions, roof pitch, volume of expected rainfall, desired rate of drainage, roof load and safety overflow requirements, location of drains and possible vandal proofing. For heavy rainfall regions, use 12" diameter type and for light rainfall regions, use 8-12" diameter type drains.



853SN



853N



850-3N



Cast Iron Combination Roof Drain



Copper Roof Drain



Copper Roof Drain with Overflow

Cast Iron Roof Drains

PART NUMBER	DESCRIPTION	MSTR CTN QTY
ROOF DRAIN 8-1/2 SERIES / SIDE OUTLET		
852SN	2" No-Hub	1
853SN	3" No-Hub	1
854SN	4" No-Hub	1
ROOF DRAIN 8-1/2 SERIES / BOTTOM OUTLET		
852N	2" No-Hub	1
853N	3" No-Hub	1
854N	4" No-Hub	1



Cast Iron Combination Roof Drain

Cast iron membrane clamps bolt to both roof and overflow drains. Designed with their own flashing skirt. Cast iron dome grate comes standard with cast iron drains. Dual membrane clamps provide a watertight bond. Shallow bowl/sump version. Dimensions: Drain/Flange: 19-1/4" x 10-1/2". Overflow grate included.

PART NUMBER	DESCRIPTION	MSTR CTN QTY
ROOF DRAIN OVERFLOW COMBINATION SHALLOW		
T-0082	2" Cast Iron Combo	1
T-0083	3" Cast Iron Combo	1
T-0084	4" Cast Iron Combo	1
ROOF DRAIN OVERFLOW COMBINATION DEEP		
850-2N	2" x 2" No-Hub	1
850-3N	3" x 3" No-Hub	1
850-4N	4" x 4" No-Hub	1

Copper Roof Drain

Designed for flat roof installations. Sits flush on roof deck. Seamless, one-piece construction. Drain and flange are formed from 100% copper. No-hub adapter is 100% brass. Dimensions: Flange: 23 gauge Drain/Flange: 18" x 18" Drain Basin: 10". Made in the U.S.A.

PART NUMBER	DESCRIPTION	MSTR CTN QTY
T-0280	2" Copper No-Hub	1
T-0281	3" Copper No-Hub	1
T-0282	4" Copper No-Hub	1



Copper Roof Drain with Overflow

Combines roof drain, flashing skirt and overflow all in one unit. Designed for flat roof installations. Seamless, one-piece construction. Drain and flange are formed from 100% copper. No-hub adapter is 100% brass. Dimensions: Flange: 23 gauge Drain/Flange: 24" x 18" Drain Basin: 10". Overflow grate included. Made in the U.S.A.

PART NUMBER	DESCRIPTION	MSTR CTN QTY
T-0272	4" Copper No-Hub	1

