

For Residential and Commercial Applications

Job Name:

Engineer/Architect:

Job Location:

Wholesaler:

Submittal Date:

Contractor:

61 Series Compression Nuts

Use: For use with instrumentation, hydraulic, and pneumatic systems. Designed for use with aluminum, copper, and plastic tubing. Not intended for use with steel tubing.

Design Features:

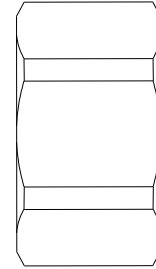
- **Little to no tube preparation.** Compression fittings do not require flaring, soldering or other types of tube preparation
- **Available in a broad range of sizes**

Operating Specifications:

Temperature: -65°- 250° F at maximum operating pressures

Working Pressure: see chart below

Vibration: Fair vibration resistance



WORKING PRESSURE		
PSI	Tube O.D.	Tube Wall (Inches)
400	1/8	0.030
400	3/16	0.030
300	1/4	0.030
300	5/16	0.032
200	3/8	0.032
200	1/2	0.032
150	5/8	0.035
100	3/4	0.035
75	7/8	0.035



FITTING MATERIAL SPECIFICATIONS	
Compression Nut	Brass

Part Listing:

<input type="checkbox"/>	61-2	For 1/8" OD tube, rough brass
<input type="checkbox"/>	61-2 B	For 1/8" OD tube, rough brass, bulk
<input type="checkbox"/>	61-3	For 3/16" OD tube, rough brass
<input type="checkbox"/>	61-3 B	For 3/16" OD tube, rough brass, bulk
<input type="checkbox"/>	61-4	For 1/4" OD tube, rough brass
<input type="checkbox"/>	61-4 B	For 1/4" OD tube, rough brass, bulk
<input type="checkbox"/>	61-4 C	For 1/4" OD tube, chrome plated
<input type="checkbox"/>	61-4 CB	For 1/4" OD tube, chrome plated, bulk
<input type="checkbox"/>	61-4S B	For 1/4" OD tube, SAE dimensions, rough brass, bulk
<input type="checkbox"/>	61-5	For 5/16" OD tube, rough brass

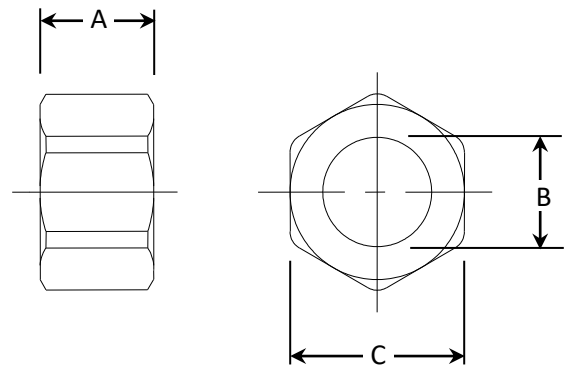
This specification and all information contained herein is the confidential and exclusive property of Brasscraft Manufacturing Company and shall not be disclosed to others without the written consent of Brasscraft Mfg. Co. This specification must be returned to Brasscraft Mfg. Co. if requested.

61 Series Compression Nuts

Part Listing (con't):

<input type="checkbox"/>	61-5 B	For 5/16" OD tube, rough brass, bulk
<input type="checkbox"/>	61-5 CB	For 5/16" OD tube, chrome plated, bulk
<input type="checkbox"/>	61-6	For 3/8" OD tube, rough brass
<input type="checkbox"/>	61-6 B	For 3/8" OD tube, rough brass, bulk
<input type="checkbox"/>	61-6 BZB	For 3/8" OD tube, oil rubbed bronze, bulk
<input type="checkbox"/>	61-6 BZH	For 3/8" OD tube, oil rubbed bronze, 2 per bag
<input type="checkbox"/>	61-6 C	For 3/8" OD tube, chrome plated
<input type="checkbox"/>	61-6 CB	For 3/8" OD tube, chrome plated, bulk
<input type="checkbox"/>	61-6 NPH	For 3/8" OD tube, polished nickel, 2 per bag
<input type="checkbox"/>	61-6 NSH	For 3/8" OD tube, satin nickel, 2 per bag
<input type="checkbox"/>	61-6 PH	For 3/8" OD tube, polished brass, 2 per bag
<input type="checkbox"/>	61-6S B	For 3/8" OD tube, SAE dimensions, rough brass, bulk
<input type="checkbox"/>	61-6S CB	For 3/8" OD tube, SAE dimensions, chrome plated, bulk
<input type="checkbox"/>	61-7	For 7/16" OD tube, rough brass
<input type="checkbox"/>	61-7 B	For 7/16" OD tube, rough brass, bulk
<input type="checkbox"/>	61-7 C	For 7/16" OD tube, chrome plated
<input type="checkbox"/>	61-8	For 1/2" OD tube, rough brass
<input type="checkbox"/>	61-8 B	For 1/2" OD tube, rough brass, bulk
<input type="checkbox"/>	61-8 C	For 1/2" OD tube, chrome plated
<input type="checkbox"/>	61-8 CB	For 1/2" OD tube, chrome plated, bulk
<input type="checkbox"/>	61-10	For 5/8" OD tube, rough brass
<input type="checkbox"/>	61-10 B	For 5/8" OD tube, rough brass, bulk
<input type="checkbox"/>	61-10 C	For 5/8" OD tube, chrome plated
<input type="checkbox"/>	61-10 CB	For 5/8" OD tube, chrome plated, bulk
<input type="checkbox"/>	61-10R CB	For 5/8" OD tube, rack - chrome plated, bulk
<input type="checkbox"/>	61-12	For 3/4" OD tube, rough brass
<input type="checkbox"/>	61-12 B	For 3/4" OD tube, rough brass, bulk
<input type="checkbox"/>	61-14	For 7/8" OD tube, rough brass
<input type="checkbox"/>	61-14 B	For 7/8" OD tube, rough brass, bulk

PART DIMENSIONS (Inches)				
Model	Straight Thread	DIM. A	DIA. B	HEX. C
61-2	5/16-24	.38	.130	3/8
61-3	3/8-24	.41	.192	7/16
61-4	7/16-24	.40	.255	1/2
61-4S	7/16-24	.44	.255	1/2
61-5	1/2-24	.44	.318	9/16
61-6	9/16-24	.42	.382	5/8
61-6S	9/16-24	.47	.382	5/8
61-7	5/8-24	.44	.444	11/16
61-8	11/16-20	.53	.507	13/16
61-10	13/16-18	.56	.632	15/16
61-12	1-18	.69	.760	1-1/8
61-14	1-1/8-18	.63	.886	1-1/4



This specification and all information contained herein is the confidential and exclusive property of Brasscraft Manufacturing Company and shall not be disclosed to others without the written consent of Brasscraft Mfg. Co. This specification must be returned to Brasscraft Mfg. Co. if requested.