

# Strut Clamps

## COPC SINGLE PIECE STRUT CLAMP FOR COPPER TUBE

- One piece break apart strut clamp
- Includes thread impression and captured screw
- Fits into open side of strut channel



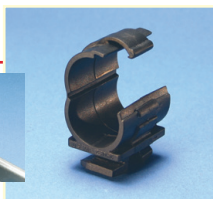
**Material:** Steel

**Finish:** Copper Electroplated

Part Number	Description	F ↓
COPC0050CP	1/2" Copper Tube, 5/8" OD	400 lb
COPC0075CP	3/4" Copper Tube, 7/8" OD	400 lb
COPC0100CP	1" Copper Tube, 1 1/8" OD	600 lb
COPC0125CP	1 1/4" Copper Tube, 1 3/8" OD	600 lb
COPC0150CP	1 1/2" Copper Tube, 1 5/8" OD	600 lb
COPC0200CP	2" Copper Tube, 2 1/8" OD	800 lb
COPC0250CP	2 1/2" Copper Tube, 2 5/8" OD	800 lb
COPC0300CP	3" Copper Tube, 3 1/8" OD	800 lb
COPC0400CP	4" Copper Tube, 4 1/8" OD	1,000 lb

## SWIFT CLIP STRUT CLAMP FOR TUBE/PIPE

- Secures pipe while allowing it to expand, preventing cracked and fractured joints
- Snap-in and twist – no tools
- Fits directly into vertical and horizontal strut channels
- Use for installation of refrigeration, A/C tubing and PEX piping in horizontal and vertical channels
- Compliant with UL® 2043 and suitable for use in air handling spaces



**Material:** Polyamide

**Working Temperature:** -40 to 284 °F

Part Number	Description
TSM0037	3/8" OD, 1/4" Copper Tube
TSM0050	1/2" OD, 3/8" Copper Tube
TSM0062	5/8" OD, 1/2" Copper Tube
TSM0075	3/4" OD, 5/8" Copper Tube
TSM0087	7/8" OD, 3/4" Copper Tube, 1/2" Pipe
TSM0112	1 1/8" OD, 1" Copper Tube
TSM0137	1 3/8" OD, 1 1/4" Copper Tube
TSM0162	1 5/8" OD, 1 1/2" Copper Tube

Can also be used with PEX piping. For PEX pipe sizes, refer to the Copper Tube Size column. Clip must be installed with temperature at or above 14 °F (-10 °C).