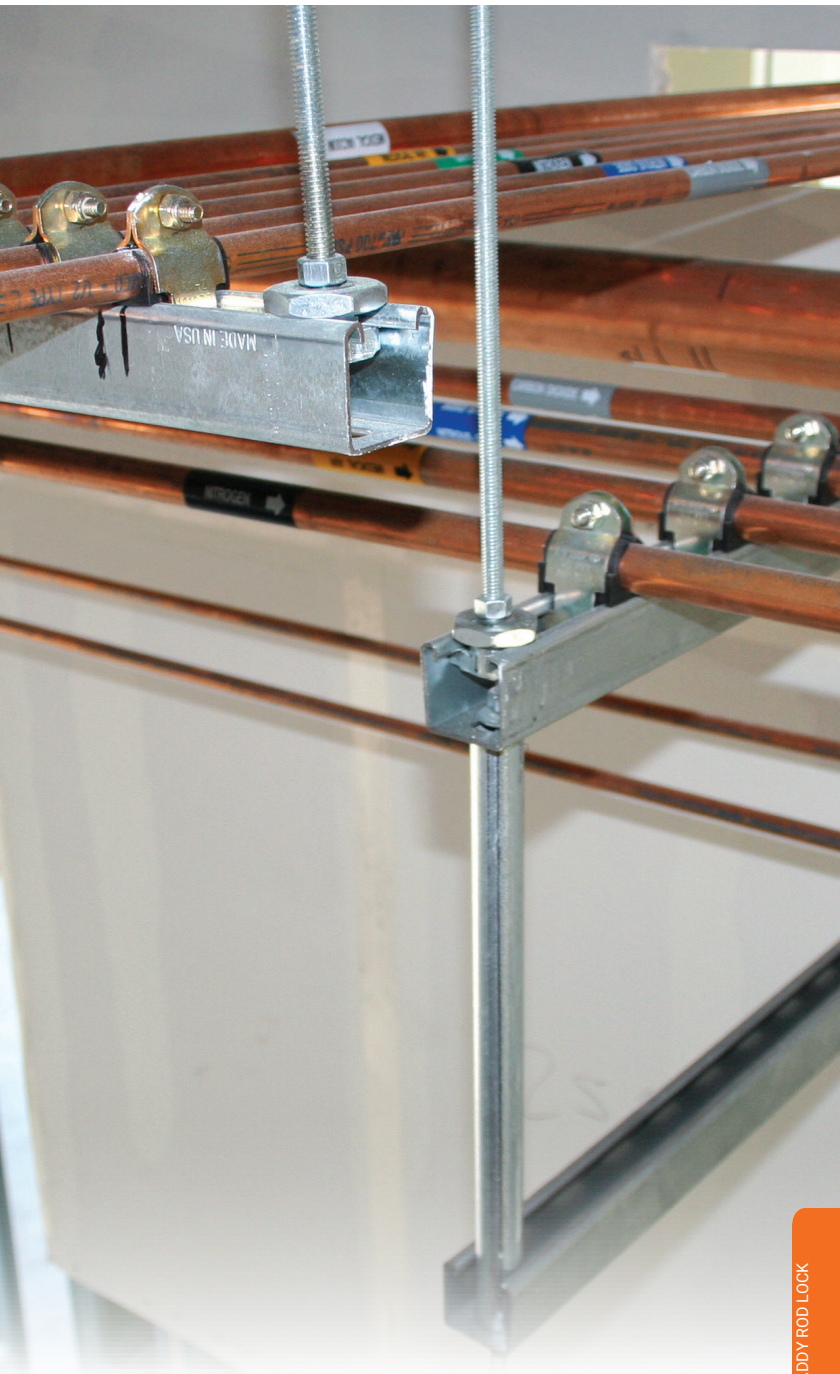


# nVent CADDY Rod Lock



CADDY ROD LOCK

# Rod Lock

## ROD LOCK ANCHOR SCREW

- For use with concrete and solid brick
- Prefabricated assemblies easily lift and lock into place, helping to save time and money
- Works with slightly damaged threads and minor burrs on the threaded rod



**Patent No.: 8,132,767  
8,434,725**

**Material: Steel**  
**Finish: Electrogalvanized**



Part Number	Description	
CRLA37EG	3/8" Rod, 2 7/8" x 1 1/4" x 7/8"	660 lb

For use on plain and electro zinc plated hardware only.  
Tested in 3000 psi (20.67 MPa) concrete.

## ROD LOCK PLYWOOD FORM PRESET ANCHOR


- Eliminate overhead drilling into building structure – Rod Lock Preset Anchors are cast in place
- Nails hold the anchor in place during the pour and easily break off with a strike of a hammer once the plywood forms are removed
- Easy "push-to-install" design allows installers to simply push the threaded rod through the mounting hole, instantly holding it in position
- Works with slightly damaged threads and minor burrs on the threaded rod
- Prefabricated assemblies easily lift and lock into place, helping to save time and money
- Plastic flange acts as insert locator when the forms are removed
- Suitable for use in seismic zones



**Patent No.: 8,132,767  
8,434,725**  
**Patent Pending**

**Material: Steel**  
**Finish: Electrogalvanized**



Part Number	Description	
CRLW37EG	3/8" Rod	1,407 lb
CRLW50EG	1/2" Rod	1,605 lb