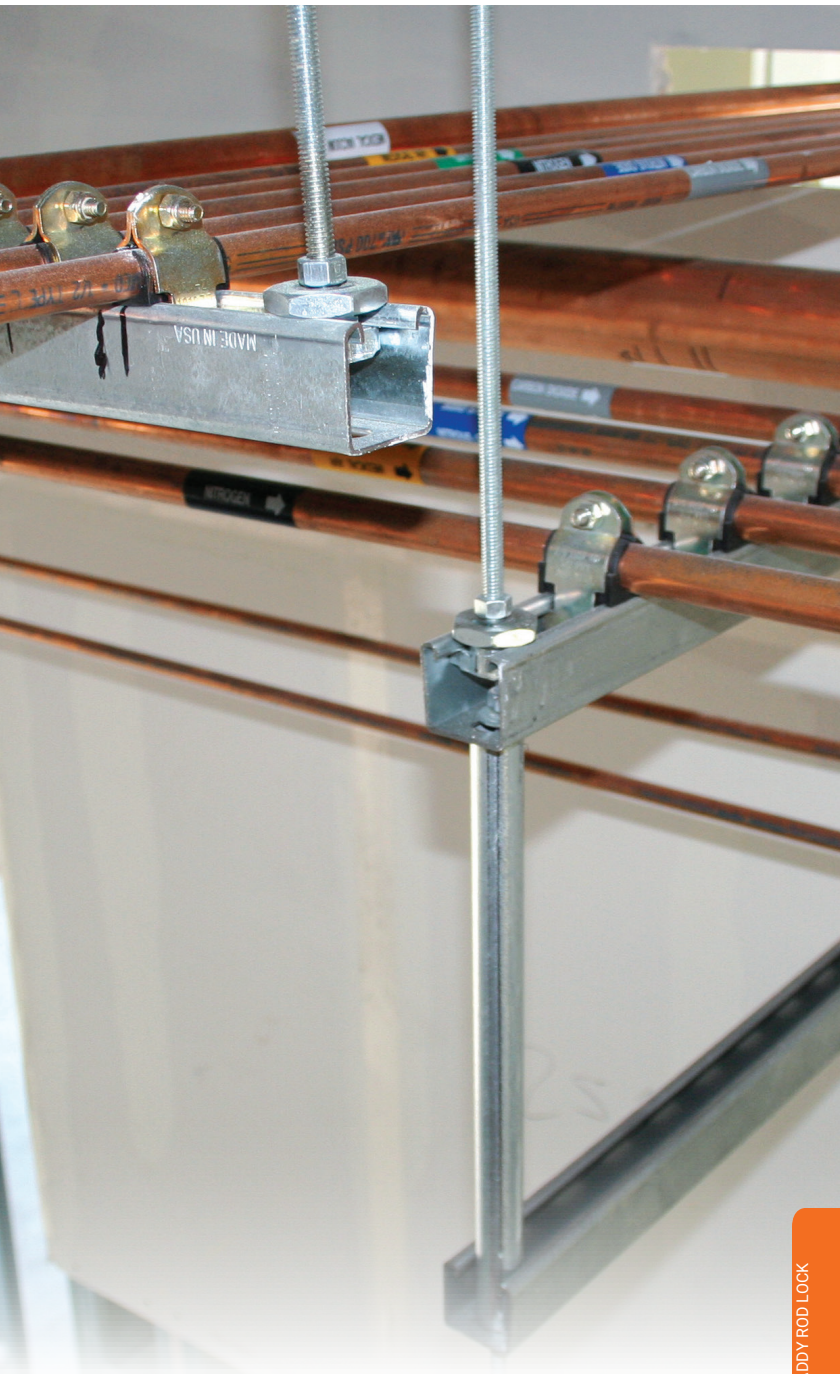


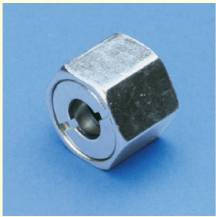
nVent CADDY Rod Lock



Rod Lock


ROD LOCK NUT

- Easy “push-to-install” design allows installers to simply push the threaded rod through the mounting hole, instantly holding it in position
- Fast installation onto long threaded rods– push the nut in place instead of threading it up the rod
- Excellent alignment and easy fine adjustment by spinning the nut
- Extremely useful in tight spaces where wrenches are difficult to use



**Patent No.: 8,132,767
8,434,725
Patent Pending**

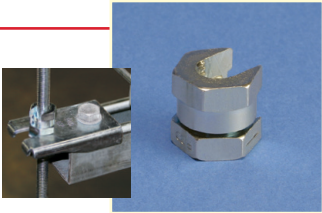
Material: Steel
Finish: Electrogalvanized


Part Number	Description	
CRLN37EG	3/8" Rod	1,350 lb

SN SERIES NUT

- Allows side mounting of nut to threaded rod
- Reduces the need for threading compared to standard nuts and washers
- Ideal for retrofit projects, such as trapeze installations
- Works with slightly damaged threads and minor burrs on the threaded rod
- Reduces installation time up to 50%

Material: Steel
Finish: Electrogalvanized



Part Number	Description	
SN25	1/4" Rod	500 lb
SN37	3/8" Rod	1,350 lb
SN50	1/2" Rod	2,250 lb

For use on plain and electro zinc plated hardware only.