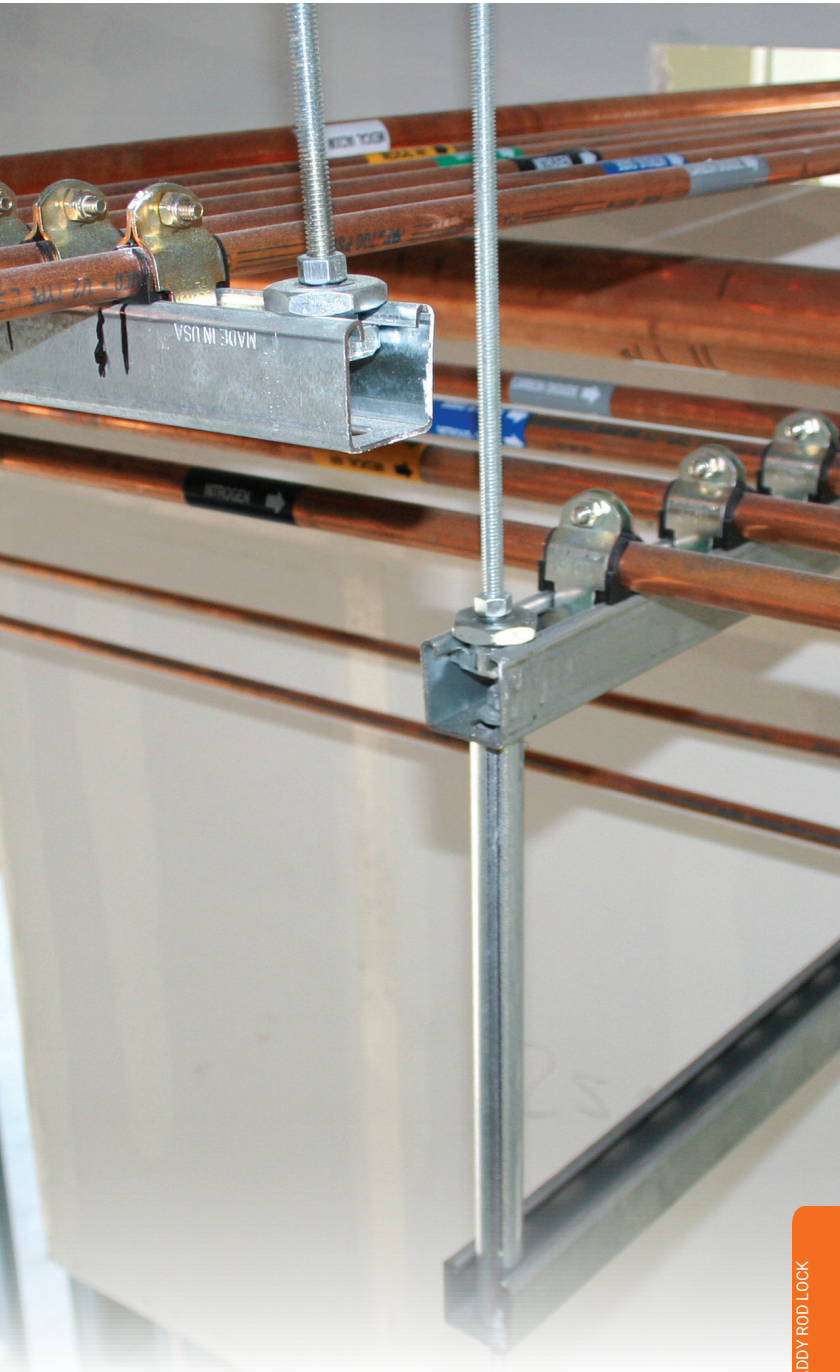


nVent CADDY Rod Lock



CADDY ROD LOCK

Rod Lock

ROD LOCK L-BRACKET

- Easy “push-to-install” design allows installers to simply push the threaded rod through the mounting hole, instantly holding it in position
- Prefabricated assemblies easily lift and lock into place, helping to save time and money
- Multiple attachment holes support the use of either self-drilling screws or bolts, offering installation options for concrete, wood, and steel structures
- Lock nut can be finger tightened, locking the rod in place
- Integrated adjustment nut enables fine tuning the system height up or down
- Extremely useful in tight spaces where wrenches are difficult to use
- Conforms with Federal Specification WW-H-171 (Type 23), Manufacturers Standardization Society ANSI®/MSS-SP-58 (Type 19 and 23)



**Patent No.: 8,132,767
8,434,725
Patent Pending**

Material: Steel
Finish: Electrogalvanized

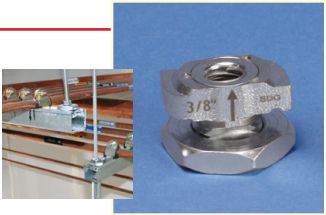


Part Number	Description	
CRL37EG	3/8" Rod	700 lb

Follow fastener manufacturer’s recommended shear and pull-out strength when fastening to the structure. Fastener not included.
Install in accordance with applicable code.

ROD LOCK CHANNEL NUT

- Provides fast universal attachment of threaded rod and hardware to standard strut profiles
- Can be used to prefabricate assemblies which can be quickly pushed onto previously installed threaded rods
- Works with slightly damaged threads and minor burrs on the threaded rod



**Patent No.: 8,132,767
8,434,725**

Material: Cast Iron
Finish: Electrogalvanized

Part Number	Description	
CRLS37EG	3/8" Rod	750 lb

For use on plain and electro zinc plated hardware only.