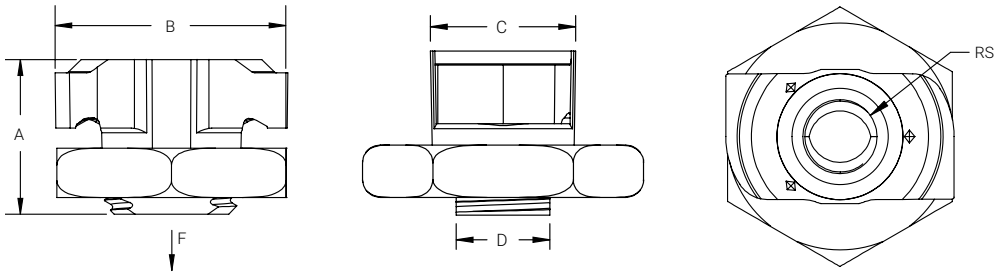


Rod Lock Channel Nut

- Provides fast universal attachment of threaded rod and hardware to standard strut profiles
- Can be used to prefabricate assemblies which can be quickly pushed onto previously installed threaded rods
- Works with slightly damaged threads and minor burrs on the threaded rod

Simple solution for multi-tiered trapeze installations or wall mount strut applications. Designed for open-side-up or open-side-down strut configurations



Material: Cast Iron
Finish: Electrogalvanized

Part Number	Rod Size RS	A	B	C	D	Static Load F	Standard Packaging Quantity
CRLS37EG	3/8"	0.91"	1.4"	0.769"	0.53"	750 lb	100 pc
CRLS37EGR2	3/8"	0.91"	1.4"	0.769"	0.53"	750 lb	20 x 2 pc

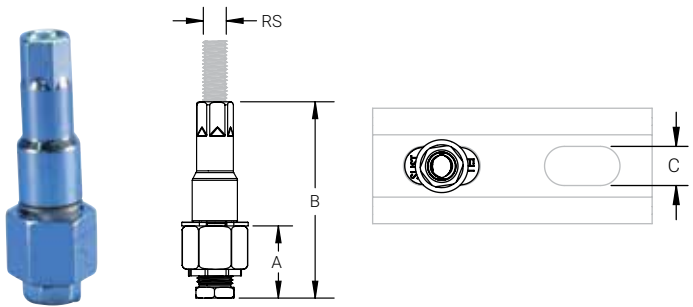
For use on plain and electro zinc plated hardware only.

“[The] Rod Lock Channel Nut is inserted into the strut, and once on-site, we lift the racks in place with some expected labor savings. The entire project includes about 350 racks of pipe.”

Will Vranich - Smith & Oby
(United States)

Rod Lock Strut Nut

- Allows for the quick creation, installation, and adjustment of multi-level trapeze assemblies
- Installs in strut profiles without the need to insert fingers or tools into the strut
- Easy “push-to-install” design allows installers to simply push the threaded rod through the mounting hole, instantly holding it in position
- Integrated adjustment nut enables fine tuning the system height up or down
- Lock nut can be finger tightened, locking the rod in place
- Accommodates slight variances in rod-to-rod position of the trapeze
- Can be used to prefabricate assemblies which can be quickly pushed onto previously installed threaded rods
- Works with slightly damaged threads and minor burrs on the threaded rod



Material: Steel
Finish: Electrogalvanized

Part Number	Strut Type	Rod Size RS	A	B	C	Wrench Size 2	Wrench Size 2
CRLSL37EG	A (1 5/8" x 1 5/8")	3/8"	1.19"	3.23"	9/16"	15/16"	14 mm

Wrench Size 1 represents Rod Lock hex nut size. Wrench Size 2 represents stem nut size.

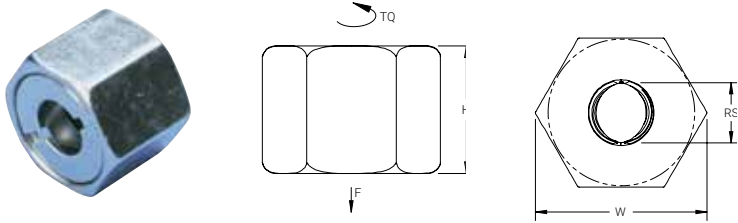
Must be installed with the open side of the strut channel facing up.

Rod Lock Strut Nuts must be installed at a minimum of 1" (25.4 mm) from both ends of the strut channel.

Rod Lock Nut

- Easy “push-to-install” design allows installers to simply push the threaded rod through the mounting hole, instantly holding it in position
- Fast installation onto long threaded rods – push the nut in place instead of threading it up the rod
- Excellent alignment and easy fine adjustment by spinning the nut
- Extremely useful in tight spaces where wrenches are difficult to use

An innovative nut that you push into place on threaded rod.



Material: Steel
Finish: Electrogalvanized

Part Number	Rod Size RS	Height H	Width W	Wrench Size	Torque TQ	Static Load F
CRLN37EG	3/8"	0.8"	1.1"	15/16"	5 ft lb	1,350 lb

Static Load based on Grade 2 threaded rod.