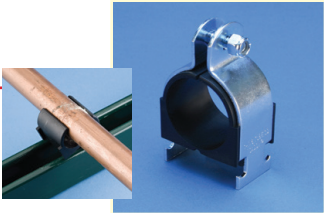


Strut Clamps

CUSHION CLAMP INSULATED STRUT CLAMP FOR PIPE/TUBE

- Fits into open side of strut channel
- Plastic cushion is hinged to spread apart for easy installation
- Reduces noise and absorbs shock by gripping the pipe/tube firmly
- Square neck of carriage bolt prevents over-tightening
- Nylon locknut prevents loosening under vibration



Material: Polypropylene; Steel
Finish: Electrogalvanized

Part Number	Description
CCC0025	1/4" OD
CCC0037	3/8" OD, 1/4" Copper Tube
CCC0050	1/2" OD, 3/8" Copper Tube, 1/4" Pipe
CCC0062	5/8" OD, 1/2" Copper Tube, 3/8" Pipe
CCC0075	3/4" OD, 5/8" Copper Tube
CCC0087	7/8" OD, 3/4" Copper Tube, 1/2" Pipe
CCC0100	1" OD, 3/4" Pipe
CCC0112	1 1/8" OD, 1" Copper Tube
CCC0125	1 1/4" OD, 1" Pipe
CCC0137	1 3/8" OD, 1 1/4" Copper Tube
CCC0150	1 1/2" OD
CCC0162	1 5/8" OD, 1 1/2" Copper Tube, 1 1/4" Pipe
CCC0187	1 7/8" OD, 1 1/2" Pipe
CCC0212	2 1/8" OD, 2" Copper Tube
CCC0237	2 3/8" OD, 2" Pipe
CCC0262	2 5/8" OD, 2 1/2" Copper Tube
CCC0312	3 1/8" OD, 3" Copper Tube
CCC0412	4 1/8" OD, 4" Copper Tube
CCC0450	4 1/2" OD, 4" Pipe