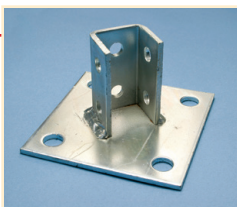
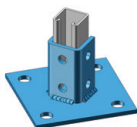


Eristrut

45° POST BASE FOR STRUT TYPE A

- Post base to create metal frames for attachment to Eristrut or Pyramid

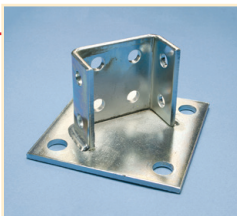
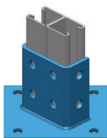


Material: Steel
Finish: Electrogalvanized

Part Number	Description
P110000EG	EG, 6" x 6" x 3 1/2"

45° POST BASE FOR STRUT TYPE AA

- Post base to create metal frames for attachment to Eristrut or Pyramid

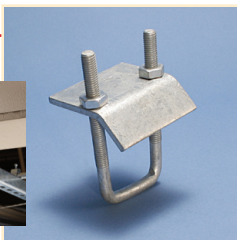


Material: Steel
Finish: Electrogalvanized


Part Number	Description
P130000EG	EG, 6" x 3 1/2"

STRUT BEAM CLAMP WITH U-BOLT

- Square U-bolt type beam clamp
- Complete with U-bolt and nuts
- Requires installation in pairs



Material: Steel
Finish: Electrogalvanized

Part Number	Description	
BC17A000EG	EG, A, C Strut	1,200 lb
BC17D000EG	EG, AA, D, E Strut	1,200 lb

Static Load is based on one pair of Strut Beam Clamps.