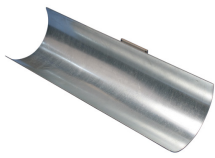
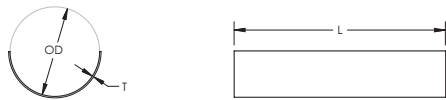


125 Weldable Insulation Shield – 1250400EG



- Distributes load of pipe evenly to eliminate or reduce insulation compression, and risk of crushing at the hanger point
- Conforms with Federal Specification WW-H-171 (Type 41), Manufacturers Standardization Society ANSI®/MSS SP58 (Type 40)



Part Number	1250400EG
Material	Steel
Finish	Pregalvanized
Shield Size	4"
Outer Diameter (OD)	4 5/8"
Length (L)	12"
Thickness (T)	18 GA
Standard Packaging Quantity	25 pc
UPC	78285636180
EAN-13	8711893087000

Insulation Shield Sizing Chart for Iron Pipe										
Nominal Iron Pipe Size	Insulation Thickness									
	1/2"	3/4"	1"	1 1/2"	2"	2 1/2"	3"	3 1/2"	4"	4 1/2"
1/2"	2"	2"	2 1/2"	3 1/2"	5"	6"	8"	-	-	-
3/4"	2"	2 1/2"	2 1/2"	3 1/2"	5"	6"	8"	-	-	-
1"	2"	2 1/2"	3"	4"	5"	6"	8"	-	-	-
1 1/4"	2 1/2"	3"	3"	5"	5"	6"	8"	-	-	-
1 1/2"	2 1/2"	3"	3 1/2"	5"	6"	8"	8"	-	-	-
2"	3"	3 1/2"	4"	5"	6"	8"	8"	10"	-	-
2 1/2"	3 1/2"	4"	5"	6"	8"	8"	10"	10"	-	-
3"	4"	5"	5"	8"	8"	10"	10"	10"	12"	-
3 1/2"	5"	5"	6"	8"	8"	10"	10"	12"	12"	-
4"	5"	6"	6"	8"	8"	10"	10"	12"	12"	-
5"	6"	8"	8"	8"	10"	10"	12"	12"	14"	-
6"	8"	8"	8"	10"	10"	12"	12"	14"	16"	-

Insulation Shield Sizing Chart for Iron Pipe										
Nominal Iron Pipe Size	Insulation Thickness									
	1/2"	3/4"	1"	1 1/2"	2"	2 1/2"	3"	3 1/2"	4"	4 1/2"
8"	10"	10"	10"	12"	12"	14"	16"	16"	18"	18"
10"	12"	12"	12"	14"	16"	16"	18"	18"	20"	20"
12"	14"	14"	14"	16"	18"	18"	20"	20"	24"	24"

Insulation Shield Sizing Chart for Copper Tubing				
Nominal Copper Tube Size	Insulation Thickness			
	1/2"	3/4"	1"	1 1/2"
1/2"	1 1/2"	1 1/2"	2 1/2"	3 1/2"
3/4"	2"	2"	2 1/2"	3 1/2"
7/8"	2"	2 1/2"	3"	3 1/2"
1"	2"	2 1/2"	3"	3 1/2"
1 1/4"	2"	2 1/2"	3"	4"
1 1/2"	2 1/2"	3"	3 1/2"	5"
2"	3"	3 1/2"	4"	5"
2 1/2"	3 1/2"	4"	4"	5"
3"	4"	5"	5"	6"
3 1/2"	5"	5"	6"	6"
4"	5"	5"	8"	8"
5"	6"	6"	8"	8"
6"	8"	8"	10"	10"

Install in accordance with applicable code.

ANSI is a registered trademark of American National Standards Institute.

WARNING

nVent products shall be installed and used only as indicated in nVent's product instruction sheets and training materials. Instruction sheets are available at www.erico.com and from your nVent customer service representative. Improper installation, misuse, misapplication or other failure to completely follow nVent's instructions and warnings may cause product malfunction, property damage, serious bodily injury and death and/or void your warranty.

© 2021 nVent All rights reserved

nVent, nVent CADDY, nVent ERICO, nVent ERIFLEX and nVent LENTON are owned by nVent or its global affiliates.

All other trademarks are the property of their respective owners. nVent reserves the right to change specifications without prior notice.

