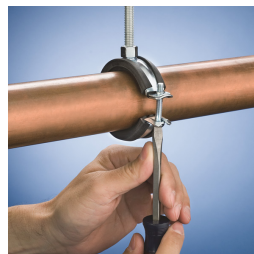
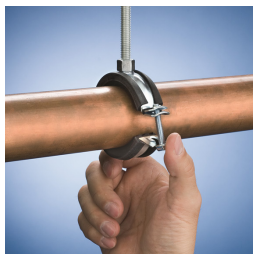
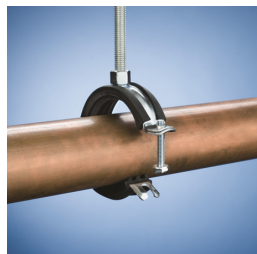
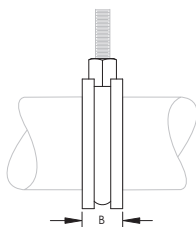
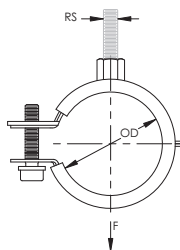


# nVent CADDY Superfix 454 Standard Duty – 454006



- Recommended for the suspension of stationary non-insulated pipe lines
- Easy-to-close clamp for steel pipe and copper tube
- Unique hinged design eliminates the need to disassemble the clamp prior to installation
- Clamp can be closed with one hand, without ever turning a screw
- All-steel design of the closing mechanism retains strength even when exposed to heat
- Comes with a welded 3/8" cap nut, allowing easy attachment to threaded rod
- Combo head bolt works with slotted, hex, or Phillips drivers
- Conforms with Manufacturers Standardization Society (MSS) SP-58 (Type 12)
- Category II noise reduction according to DIN EN ISO 3822-1
- Compliant for sound insulation design according to DIN 4109
- Reaction-to-fire classification is "E" in compliance with DIN EN 13501-1



Part Number	454006
Material	Steel EPDM-SBR Rubber
Finish	Electrogalvanized
Temperature	-58 to 230 °F
Outer Diameter (OD)	1.260" – 1.378"
Pipe Size	1"
Copper Tube Size	1 1/4"
Rod Size (RS)	3/8"
B	29/32"
Static Load (F)	180 lb
Standard Packaging Quantity	100 pc
UPC	78285659048

Lining is EPDM rubber.

## WARNING

nVent products shall be installed and used only as indicated in nVent's product instruction sheets and training materials. Instruction sheets are available at [www.erico.com](http://www.erico.com) and from your nVent customer service representative. Improper installation, misuse, misapplication or other failure to completely follow nVent's instructions and warnings may cause product malfunction, property damage, serious bodily injury and death and/or void your warranty.

© 2021 nVent All rights reserved

nVent, nVent CADDY, nVent ERICO, nVent ERIFLEX and nVent LENTON are owned by nVent or its global affiliates.

All other trademarks are the property of their respective owners. nVent reserves the right to change specifications without prior notice.

