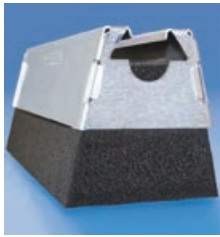


Pyramid ST Strut-Based Supports



Also Available: Pyramid 50 Foam-Based Support



- Replaces slow and labor-intensive installation methods
- Supports pipe, conduit, cable tray and equipment on roofs and below raised floors
- Easily increase load capacity by combining similar Pyramid supports
- Protects the roof membrane while absorbing shock and vibration, without absorbing water
- Metal cover protects against weather and other environmental conditions, such as bird damage

Material: Polyethylene, Polypropylene, Steel
Static Load Safety Factor: 3:1

Part Number	Length	Height	Static Load
Finish: Electro-galvanized			
RPS50H4EG	10 3/8"	4"	50 lb
RPS50H6EG	10 3/8"	6"	50 lb
Finish: Hot-dip galvanized			
RPS50H4HD	10 3/8"	4"	50 lb
RPS50H6HD	10 3/8"	6"	50 lb

SUPPORT ACCESSORY:



RIGD Single Piece Strut Clamp for Pipe/Rigid Conduit

Material: Steel
Finish: Stainless

- One piece break apart strut clamp (1/2" thru 4" pipe size)
- Includes thread impression and captured screw
- Fits into open side of strut channel
- Conforms with Manufacturers Standardization Society (MSS) SP-58 (Type 59)



USC Universal Strut Clamp for Pipe/Conduit

Material: Steel
Finish: Hot-Dip Galvanized

- Compatible with 3/8" thru 12" pipe size
- Consists of two clamps, nut and bolt
- Fits into open side of strut channel
- Conforms with Manufacturers Standardization Society (MSS) SP-58 (Type 59)

