



## 365M MALLEABLE IRON WALL OR CEILING PLATE, EG, 3/8" ROD

### CATALOG NUMBER

**365M0037EG**



### FEATURES

Structural attachment to support hanger rod from a ceiling or a wall

### PRODUCT ATTRIBUTES

Material: Cast Iron

Finish: Electrogalvanized

Rod Size: 3/8"

Hole Size: 1/4"

A: 15/32"

B: 1 15/16"

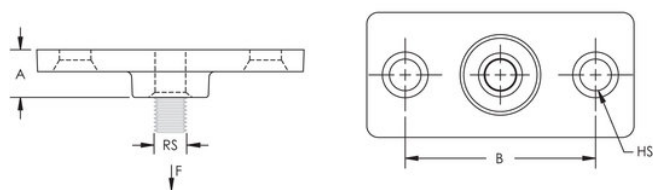
Pipe Size: 2" Max

Static Load: 180 lb

### ADDITIONAL PRODUCT DETAILS

Follow fastener manufacturer's recommended shear and pull-out strength when fastening to the structure. Fastener not included.

DIAGRAMS



WARNING

nVent products shall be installed and used only as indicated in nVent's product instruction sheets and training materials. Instruction sheets are available at [www.nvent.com](http://www.nvent.com) and from your nVent customer service representative. Improper installation, misuse, misapplication or other failure to completely follow nVent's instructions and warnings may cause product malfunction, property damage, serious bodily injury and death and/or void your warranty.

North America

+1.800.753.9221  
Option 1 – Customer Care  
Option 2 – Technical Support

Europe

Netherlands:  
+31 800-0200135  
France:  
+33 800 901 793

Europe

Germany:  
800 1890272  
Other Countries:  
+31 13 5835404

APAC

Shanghai:  
+ 86 21 2412 1618/19  
Sydney:  
+61 2 9751 8500



Our powerful portfolio of brands:  
[nVent.com](http://nVent.com) CADDY ERICO HOFFMAN RAYCHEM SCHROFF TRACER