

Eligibility

Experiencing intimate partner violence, sexual assault and/or stalking.

Multiple Counties Served.

Individuals 18 years or older, with exception of children with an adult*.

*Extenuating circumstances will be reviewed on a case-by-case basis.



Services

ASSISTANCE
LOCATING
EMERGENCY
SHELTER

COURT
ADVOCACY

COMMUNITY
EDUCATION

PARENTING
EDUCATION

SAFETY
PLANNING

RESOURCES
&
REFERRALS

& MORE

Shelter Information

Our shelter is designated for women and their children seeking safety as a result of sexual assault and/or intimate partner violence.



HOUSE
OF HOPE
SHELTER:

ADVOCACY PROVIDED

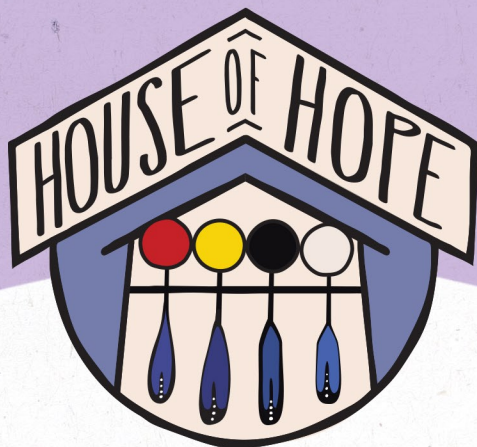
INDIVIDUALS EXPERIENCING THE
ABOVE ARE WELCOME FROM
ANY COUNTY

24 HOUR POLICE PATROL

We believe

*in the value, worth,
and dignity of each person.*

*The House of Hope seeks to
eliminate domestic violence by
providing victims and the
community with appropriate,
effective services and programs.*



*We bring people together
to build networks and
to learn from each other
to make central Oklahoma safer.*

Contact

Office

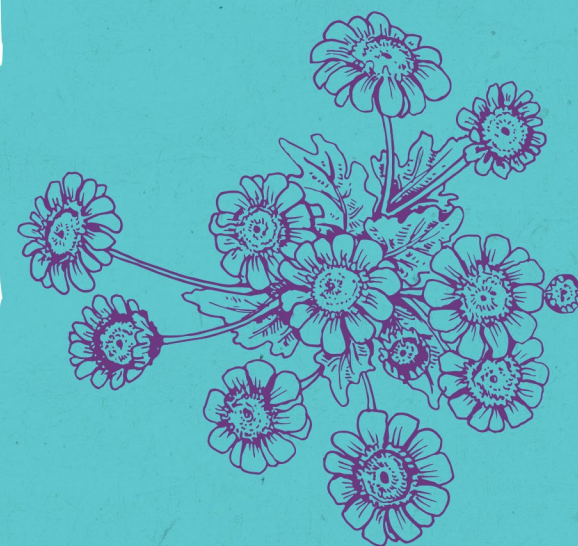
405-275-3176
1310 Gordon Cooper Dr.
Shawnee, OK 74801
M-F 8:00 - 5:00

Shelter Emergency Line

405-878-HOPE (4673)
Available 24/7

cpnhouseofhope.com
 [cpnhouseofhope](https://www.facebook.com/cpnhouseofhope)

This publication was supported by grant
BH16IHS0032-01-00 awarded by Indian Health
Services. The opinions, findings, conclusions
and recommendations expressed in the
publication are those of the author and do not
necessarily reflect the views of IHS.



Citizen Potawatomi Nation
HOUSE OF HOPE



Domestic Violence Program