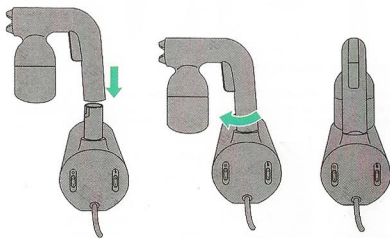


HANDY.TAN

ALL-IN-ONE PROFESSIONAL
HAND-HELD SPRAY TAN MACHINE

OPERATION MANUAL

ASSEMBLY



1. To begin, attached the Handy Tan spray tan gun to the Handy Tan mini turbine by inserting the bottom of the handle of the spray tan gun into the connector of the mini-turbine.
2. Turn it clockwise until firm and secure the spray tan gun to the mini-turbine. This will lock the spray tan gun firmly into place.



3. Once the spray tan gun is attached to the mini-turbine, insert the power cord into the device and in the wall and turn power on at the wall switch.

REMOVING THE SPRAY TAN GUN

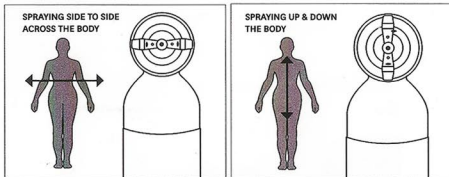
To remove the Handy Tan mini-turbine for cleaning and refilling solution cup, turn the spray gun anti-clockwise to unlock and remove it from the mini-turbine.

USING YOUR HANDY TAN

1. Prior to tanning, make sure you exfoliate your skin in the shower using the Exfoliating Mitt. Exfoliating allows for a smoother application as well as helping the tan to fade evenly.
2. Be sure skin is completely clean and dry. Do not apply any moisturisers, oils, deodorants or perfumes prior to use. Waxing or shaving should also be done at least 24 hours prior to tanning.
3. Put hair up and cover with plastic cap, remove all jewellery.

4. SETTING SPRAY PATTERN

Adjusting the spray-pattern nozzle of your Handy Tan to suit your preferred style of spray tanning.

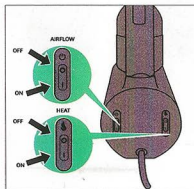


SPRAYING SIDE TO SIDE ACROSS THE BODY

Set the nozzle fan "horizontal". This spray pattern is perfect for spraying side to side ie. left to right – right to left across the body.

SPRAYING UP & DOWN THE BODY

Set the nozzle fan "vertical". This spray pattern setting is perfect for spraying up and down, top to bottom of the body.



5. OPERATION

POWER ON : AIRFLOW

Turn the device 'on' by pressing the on switch. The Handy Tan has an intelligent Air-Smart Switch, so with just turning it on, it controls the airflow for the perfect spray. This creates flawless spray tanning results every time.

POWER ON : HEAT

To add the option of heat, simply turn the "heat" function on. The heat function can be used as a drying function after the spray tan.

4. SPRAY TAN TECHNIQUE

Holding the Handy Tan approximately 10-20 cm away, start at the feet and work up, using sweeping, steady motions, keeping the Handy Tan moving at all times as holding in one spot too long may result in dark spots.

If a dark spot occurs, smooth our immediately with the Application Mitt and continue spraying. Work your way up the entire body, making sure to get to complete and even coverage. Avoid spraying directly your heels, knees, and elbows to prevent deeper tanning in these areas.

For best results refer to your product brands "Recommended Spray Tan Poses" for the Perfect Tan.

5. Allow tan to dry before wearing clothing. Follow your preferred product instructions for best results when applying the spray tan. Avoid swimming or exercising, for the next 24 hours.



PRECAUTION IF YOUR SKIN IS VERY SENSITIVE IT IS ADVISABLE TO CONDUCT A PATCH TEST A MINIMUM OF 12 HOURS PRIOR TO THE APPLICATION OF THE TAN.

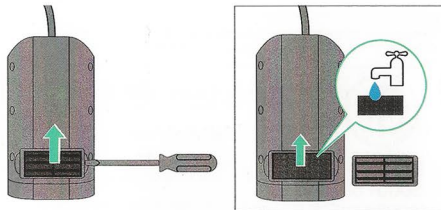
REGISTER YOUR
12 MONTH GUARANTEE
TANEASYPROTOOLS.COM



CLEANING YOUR HANDY TAN FILTER

The Handy Tan Filter is located on the base of the unit as pictured below.

IMPORTANT! Please disconnect from supply circuit before cleaning or removing filters. Use tools (Flat head screw driver recommended) to remove the filter cover from the mini turbine to access the filter.



1. Remove the filter cover from the mini turbine to access the filter. We recommend using a Flat head screwdriver to remove the cover.
2. Wash under cold water. Do not use detergents to clean the filter.
3. Please leave to dry completely.



IMPORTANT

WASH MINI COMPRESSOR
FILTER WITH WATER AT
LEAST EVERY 6 MONTHS



CLEANING YOUR HANDY TAN SPRAY TAN GUN

Clean your Handy Tan after each use. Do not use any alcohol, acetone, petrol or any abrasive-cleaning agents.

1. Remove the spray tan gun from the Handy.Tan Mini Turbine.
2. Unscrew the cup from the Spray Gun and empty any un-used solution from the cup.
3. Rinse the empty solution cup with warm water until clean and then fill the cup about ¼ full of warm water.
4. Insert the cup and screw tightly, back into the spray tan gun and re-connect to the mini-turbine.
5. Turn on your Handy.Tan and direct the spray tan gun into the sink and spray the clean water through until the cup is empty. This will clean through the needle and out the spray-pattern nozzle.
8. Disconnect the spray tan gun from the mini turbine and unscrew the cup.
9. Wipe all areas dry with a cloth including the cup and Handy.Tan ready for the next use.



IMPORTANT! You must not submerge the spray gun under water. If your handy tan has excess spray solution, wipe down with cleaning wipes. Alternately you can use a smooth cloth (avoid anything abrasive) with a general glass cleaner to maintain the gloss finish.

STORAGE

1. Always allow the Handy Tan to cool down before storing away.
2. When the Handy Tan has cooled down, fold the power cord in the same way as it was first delivered in its packaging. Do not wrap the power cord around the Handy Tan as this can strain the cord and cause premature power cord failure.

HANDY TIP

ANY SPRAY TAN SOLUTION WILL
LAST LONGER IF STORED IN THE
REFRIGERATOR AFTER OPENING.



MANUFACTURER'S GUARANTEE

All Tan.Easy Pro Tools devices are individually tested before leaving the factory. However in the unlikely event of the product providing defective due to faulty workmanship or materials, then, at its sole discretion, Tan.Easy Pro Tools will repair or replace the product at no charge with an identical or equivalent product within one year from the original date of purchase. A replacement product assumes the remaining warranty of the original product, which ever provides longer coverage for you. When a product is exchanged, any replacement item becomes your property and the replaced item becomes property of Tan.Easy Pro Tools.

To claim under this guarantee please visit [taneasyprotools.com/warranty-and-guaranty/](https://www.taneasyprotools.com/warranty-and-guaranty/) and follow the on-screen instructions to complete your return. Please ensure that you include a proof of purchase with any returned product.

This guarantee only applies to genuine Tan.Easy Pro Tools purchased through Tan.Easy Pro Tools approved stockists, and does not cover products repaired or served by anyone other than a Tan.Easy Pro Tools personnel and Tan.Easy Pro Tools representatives. Note that this guarantee may be invalidated were serial numbers or identification have been erased, damaged or modified. This does not affect your statutory rights.

The guarantee does not include;

1. Damage caused by misuse, improper treatment or violent usage.
2. Damage caused by failure to comply with these instructions for use.
3. Damage caused by connecting this appliance to the incorrect voltage
4. Damage caused by connecting accessories supplied by other manufacturers.
5. Minor faults, which do not significantly affect the value of the device or its effective use.

Australia Only.

Our goods come with guarantees that cannot be excluded under the Australia Consumer Law. You are entitled to a replacement or refund for a major failure and for compensation for any other reasonably foreseeable loss or damage. You are also entitled to have the goods repaired or replaced if the good fail to be of acceptable quality and the failure does not amount to a major failure.

IMPORTANT SAFETY PRECAUTIONS

Before using this Tan.Easy Product, read all instructions and cautionary markings in this manual and on the device. When using an electrical appliance, basic precautions should always be followed:

WARNING

TO REDUCE THE RISK OF FIRE, ELECTRIC SHOCK, OR INJURY:

1. Do not leave product when plugged in. Unplug from outlet when not in use and before servicing.
2. Indoor Use ONLY. Do not use outdoors or on wet surfaces. Store indoor ONLY.
3. Do not allow to be used as a toy. Close attention is necessary when used by or near children.
4. This product is not intended for use by persons (including children) with reduced physical, sensory or mental capabilities, or lack of experience and knowledge, unless they have been given supervision or instruction concerning use of the appliance by a person responsible for their safety.
5. Use this device only for its intended function and do not use attachments not recommended by the authorized Tan.Easy Pro Tools manufacturer.
6. Do not use the device if the cord is damaged. In the event of damage discontinue use immediately. If the supply cord is damaged, it must be replaced by the authorized Tan.Easy Pro Tools manufacturer.
7. If device is not working as it should, has been dropped, damaged, left outdoors, or dropped into water, do not use, contact Tan.Easy Pro Tools Customer Care via the website or regional telephone number.
8. Do not pull or carry by cable, use cable as a handle, close a door on cable, or pull cable around sharp edges or corners. Keep cable away from heated surfaces.
9. Do not unplug by pulling on cable. To unplug, grasp the plug, not the cable.
10. Do not handle plug with wet hands.
11. Turn off all controls before unplugging.
12. Do not spray flammable or combustible liquids, such as gasoline, or use in areas where they may be present.
13. Do not use without the filter in place.
14. Do not use an extension cord unless the cord complies with local region electrical safety standards.
15. Periodically inspect the power cord for signs of damage
16. Do not use a fluid having a flash point higher than 60°C. When a combustible liquid is sprayed there can be danger of fire or explosion, especially in a closed area. Read instruction manual before operating.
17. Fuse is only able to be replaced by manufacturer.

IMPORTANT: This device is designed for 220-240V or 110V respectively depending on region. Always check that the voltage of your electricity supply matches the voltage of your Tan.Easy Pro Tools device.

1. Do not use this product with a voltage inverter or any device designed to convert the electrical supply to 220-240V or 110V from a different source.
2. Always ensure that your appliance is connected to a properly earthed power supply. Your Tan.Easy Pro Tools Device is a class II electrical appliance.



Do not pull on cables.



Do not submerge in water or get wet.



Do not use near open flames

FAILURE TO OPERATE

In the unlikely event that your Handy Tan device does not operate correctly, check that the Handy Tan product and main power supply are switched on, and that power is available.

For UK plugs, please ensure that the fitted fuse is intact and functioning; if it is not, replace it with an identically rated British Standard Fuse.

If in doubt or for further advice, please visit the Support and Trouble shooting page at TANEASYPROTOOLS.COM or contact an approved Tan.Easy stockist or contact Tan.Easy Customer services for further advice.

CUSTOMER SERVICE

Thank-you for choosing to purchase this Tan.Easy Pro Tools product.

Your Tan.Easy Pro Tools device will be covered for parts only for 12 months from the date of purchase, as detailed in the terms of the Tan.Easy Pro Tools guarantee on taneasyprotools.com.

If you have a query about your Tan.Easy Pro Tools product, contact Tan.Easy Pro Tools by going to the website taneasyprotools.com.

Most queries can be solved by our frequently asked questions online. Alternatively you can contact your local Tan.Easy representative in your region.

Please state your serial number on any warranty claims you have. Your serial number can be found on the rating plate, which is on the base of your machine or below:



INTERTek
5000768 CE

CONFORMS TO UL STD 73
CERTIFIED TO CAN/CSA
STD C22.2 No 68

TAN.EASY
PRO TOOLS



MOBILE SPRAY TAN GUN
SERIAL NUMBER USA-H-1505



TAN.EASY PRO TOOLS, 158 Christmas St, Fairfield, Vic. AUSTRALIA. 3078 TANEASYPROTOOLS.COM
FOR MORE INFORMATION SEE OPERATION MANUAL. MADE IN CHINA

This is for example purposes only.

Note your serial number for future reference

SERIAL NUMBER

TROUBLESHOOTING

Refer to taneasyprotools.com

REVISION DATE: 5-05-15 #2

All rights are reserved. No part of this document may be photocopied, reproduced or translated to another language without prior written consent of Tan.Easy Pro Tools.

NOTICE

The information contained in this document is subject to change without notice and should not be construed as a commitment by Tan.Easy Pro Tools.

Tan.Easy Pro Tools assumes no responsibility for any errors that may appear in this document nor does it make expressed or implied warranty of any kind with regard to this material, including, but not limited to, the implied warranties of merchantability and fitness for a particular purpose.

Tan.Easy Pro Tools shall not be liable for incidental or consequential damages in connection with or arising out of the use of this document and the program material.

FOR TROUBLE SHOOTING
& SUPPORT GO TO
TANEASYPROTOOLS.COM

