

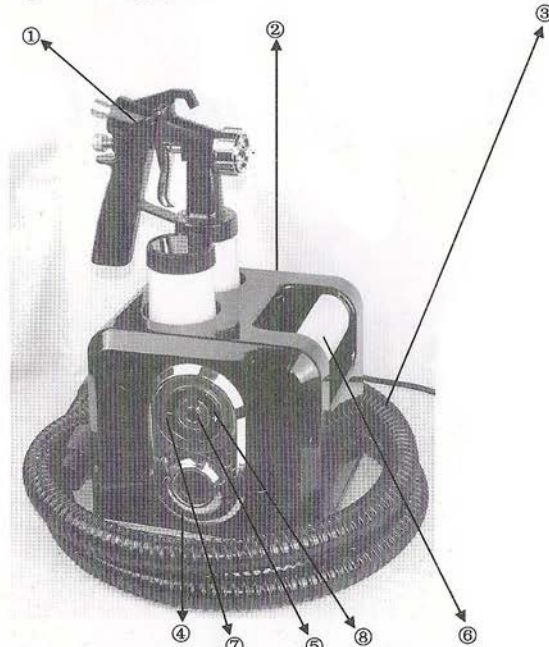
New Tanning System



User's Manual

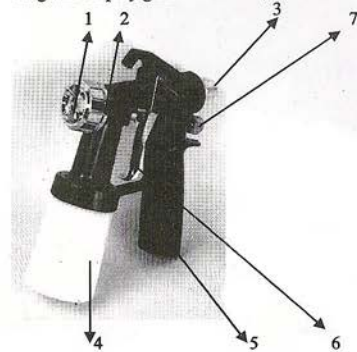


Diagram of Tanning System



- ① Spray gun
- ② Turbine machine
- ③ hose
- ④ Hose connector
- ⑤ On/Off button
- ⑥ Handle
- ⑦ Speed down button
- ⑧ Speed up button

Diagram of spray gun



1 SPRAY NOZZLE

- 2 AIR CAP
- 3 CONNECTOR FOR HOSE
- 4 CUP
- 5 HANDLE
- 6 TRIGGER
- 7 SOLUTION ADJUSTMENT KNOB

This Manual covers all
HVLPTANNING SYSTEM

Unpacking your HVLPTAN System

As you unpack your HVLPTanning Turbine System, here
what you will find:

- One Tanning System HVLPTAN Turbine Pump Unit
- One Tanning System HVLPTAN Gun
- One Tanning System HVLPTAN Gun Hose
- One Pro Tanning System HVLPTAN Manual (this book)

Depending on the specific model you purchased, you may have received some or all of the following:

If any of these items are damaged or missing in shipping, please contact your supplier.

See Assembly & Setup on the previous page.

WARNING

DO NOT USE EQUIPMENT BEFORE READING THIS SECTION

A fire or explosion hazard is present when spraying flammable materials. In order to assure safe operation of your spray
system,

Please read the following instructions carefully.

Always spray in a well ventilated area.

Always keep turbine system at maximum length of hose.

Always store indoors, never allow unit to freeze.

Always use original manufacturer's replacement parts

Never alter or modify any part of this equipment; doing so can cause equipment malfunction and/or bodily injury.

Never attempt to clean any part of the turbine system while it is plugged in.

CAUTION: TO REDUCE THE RISK OF ELECTRIC SHOCK,

DO NOT EXPOSE TO WATER.

Never leave spray equipment unattended. Keep away from children or any person not familiar with spray equipment.

GROUNDING INSTRUCTIONS:

This product should be grounded. In the event of an electrical short circuit, grounding reduces the risk of electrical shock by
providing an escape wire for the electric current. This product is equipped with a cord that has a grounding wire and
appropriate grounding plug. The plug must be plugged into an outlet that is properly installed and grounded in accordance
with all local codes and ordinances. Do not operate unit with a damaged cord or plug. Do not pull or carry unit by the cord.
Keep away from heated surfaces. Do not unplug by pulling on the cord.

DANGER: Improper installation of the grounding plug can result in the risk of electric shock. Check with a qualified
electrician or serviceman if in doubt as to whether the product is properly grounded. Do not modify the plug provided. If it

will not fit the outlet, have the proper outlet installed by a qualified electrician. Make sure that the turbine is connected to an outlet with the same configuration as the plug.

DO NOT USE ANY ADAPTERS WITH THIS PRODUCT.

USING EXTENSION CORDS: Use only a three wire extension cord with a 3 slot receptacle similar to the plug on the turbine. Make sure your extension cord is in good condition. When using an extension cord, be sure to select one that will carry a heavy enough current for the turbine system used. An undersized cord will cause a drop in the line voltage resulting in loss of power and overheating. If in doubt use the next heavier gauge. The smaller the gauge number, the heavier the wire thickness. Please use the chart below as a guide to selecting the proper size extension cord.

WARNING NOTICE

1. BEFORE USING THE MACHINE PLEASE INSTALL THE FILTER ON THE BOTTOM OF THE MACHINE.
2. WHEN USING THE MACHINE PLEASE DO NOT WORK MORE THAN 15 MINUTES ONE TIME TO PROTECT THE MOTOR OF THE MACHINE. THE MOTOR HAS THE OVER HEAT PROTECTOR, WHEN IT IS OVER HEAT, THE MOTOR WILL SHUT DOWN, WHEN THE TEMPERATURE IS NORMAL, THE MOTOR WILL RESUME OPERATION. IT NORMALLY WILL TAKE 30 MINUTES TO COOL TO NORMAL WORKING TEMPERATURE.
3. DON'T COVER THE AIR INLET OF THE MACHINE EXCEPT WITH THE FILTER
4. DON'T CLOSE OFF THE AIR FLOW FROM THE GUN, IT SHOULD HAVE AIR FLOWING OUT ALL THE TIME. IF NOT THE MOTOR WILL BE OVER HEAT, OR THE MACHINE MAY BURN OUT.

HVLP-TAN Manual

More about your new HVLP-TAN System

You are about to enjoy the great benefits of turbine spraying. Our designs are the result of many years experience in manufacturing turbine spray systems, and Turbine spray guns. Whether you are new to spraying, you have sprayed before, or are just new to turbine spraying; there are some basic spraying guide lines that will help you to achieve the best results and optimum success from your new equipment. Reading this information carefully and following these simple steps will ensure that you get the best performance and results from your new HVLP tanning system.

HOW YOUR HVLP SPRAY SYSTEM WORKS

Your HVLP-TAN System has three components: the HVLP unit, an air hose and a HVLP-TAN System spray gun. The turbine unit when connected to the correct electrical power supply and with the on/off switch in the "on" position provides a continuous source of clean, warm, dry, low pressure turbine air. The air hose connects the turbine unit to the spray gun. Air flows through the hose to the nozzle of the specially designed HVLP-TAN System spray gun. Atomization of the tanning solution is achieved when the air mixes with the stream of fluid passing through the tip/nozzle. This low pressure atomization principle achieves minimum misting (overspray) to the spray environment.

The HVLP-TAN System turbine blower has one air hose outlet on the side of the unit and is designed to run one spray gun.

Note: It is not necessary to empty and clean your spray gun when you pause between applications. Be sure, however, to clean your spray gun thoroughly at the end of your work session. It is a bad idea to leave solution in your spray gun overnight. Please ensure you refrigerate your tanning solution to avoid premature spoiling.

Assembly and Set Up

What you will need:

The Tanning Systems HVLP-TAN System - no tools are required.

Start by attaching the threaded end of the hose to the air outlet on the Turbine Air Pump, then connect the gun with the air hose.

The Standard HVLP-TAN Gun Has 1 adjustment:
GUN SETUP and ADJUSTING - More details on the next page.

Gun (black) has 1adjustments:

Fan Pattern Control and Fluid Control (trigger throw).



The Fluid Control Knob is found at the rear of the gun above the handle. It controls the amount of solution that is sprayed through the nozzle. It is vital to practice to find the right setting before you begin spraying.

Tip: Turn the knob clockwise for less solution and counter-clockwise for more solution. The further you can pull the trigger, the further the needle inside the gun is retracted and the more solution comes out. About a 5mm trigger pull is ideal.

HOW TO FIND THE BEST SETTING

To find the optimal setting for the Flow Control Knob first set the knob so that only air is coming out of the gun. Then, turn the knob counterclockwise slightly to start the flow of spray. Each turn, test the spray on a white sheet or towel to check the amount of solution coming out of the nozzle. Keep doing this until you have a very fine, even “mist” and a light tan colour is showing on your towel.

Your spray gun offers you many options. You can adjust the air cap to three positions. One will produce a horizontal pattern for spraying across, another will produce a vertical pattern for spraying up and down, and the third will produce a round pattern to spray small areas such as arms or the face. Our Standard 2-stage turbine will provide you with all of the air that you will need to apply our HVLP-TAN “DHA” solution.

This powerful turbine will put out over 35 CFMs at 3.5 PSI. By utilizing massive amounts of High Volume Air Flow at a Low Air Pressure, you are able to apply the fine mist required for a beautiful application of tanning solution. A full body spray tan can be achieved in less than 2 minutes,

Replace the filter on any of the HVLP-TAN turbine pumps is a snap. The filter is reusable and to clean, rinse under water and allow to air dry before putting back in your machine.

Testing & Adjusting Your Tanning System

Now that your system is assembled, it's ready to test and adjust in preparation for the first use. First, remove the bottle from the gun. For this first test, place clean water into the bottle and replace it onto the gun. Turn both Fan & Fluid adjusters all the way in (clockwise). Making certain that all HVLP-TAN Turbine Pump precautions have been followed and that the Turbine Pump is plugged in. Turn the Turbine Pump on. Next, aim the gun toward a sink, towel or other receptacle to collect the water, and pull the trigger. While the gun is triggered and air and water is flowing, you can twist the fluid adjustment knob to the left (counterclockwise) to increase the trigger travel (see diagram on previous page) for the optimum flow of material. Note that the optimum adjustment will usually be one or two turns out, in other words, adjusting it all the way in will usually prevent any trigger movement which will prevent the flow of material from the gun. When adjusting the standard (metal) gun, note that turning the fluid (trigger) control counterclockwise past the point of maximum trigger movement will allow the knob assembly to thread completely out of the gun body. You will want to avoid doing this, but if this happens, simply press the knob assembly back in against the spring pressure, align the threads, and turn clockwise to a normal adjustment position. Once you begin applying the tanning solution with the gun, you should be able to find the optimum control adjustments for your specific gun-pump-material combination to suit your specific preferences and application technique. As above, this should be set only one or two turns out. All the way in produces a round pattern, two or three turns out produces a tall, oval pattern. You can test this by spraying on paper as you make your final adjustments.

The Client Needs To Know

Before your client comes in for the tanning service, they should be aware of the following:

They should shower and exfoliate to eliminate and dead skin cells ready to shed.

If possible, apply nail polish or a clear to prevent the possibility of the nails becoming discolored by the solution.

Wear loose fitting clothes to the session so that upon leaving, the clothing is less likely to scuff off the product and treated skin surface.

Apply no lotions, creams, makeup or other products to the skin or jewelry which could block the tanning solution from penetrating or cause an uneven application or streaking.

Wear an old, dark colored bathing suit or undergarments planning ahead as to where they want their tan lines - if any.

Make them aware that it is slightly possible that the garments they wear during the application, and those they wear home could become stained by the tanning solution depending on the type of fabric - especially if white or light colored natural fibers. Wash all garments upon returning home.

Its generally best for long hair, especially blonde hair to be tied up away from the face and neck to allow ready access and an even application.

Their new tan will begin to fade over the next few days, but the fading can be slowed if they will moisturize regularly. The tan is only on the uppermost dead skin layer, which is perpetually being sluffed off. Keeping the skin moisturized and not exfoliating will slow this process, which could extend their tan to perhaps 10 or more days.

The Application Process

We recommend that you have the following minimum items in place before you begin to spray:

1. PROPER VENTILATION

To minimize the effects of any over-spray a good airflow and an extraction system should be used.

2. OVER-SPRAY PROTECTION

A portable or fixed overspray booth which can be washed down periodically should be used.

3. LIGHTING

It is essential to have good lighting. Bulbs that replicate natural daylight and mounted from above and below is recommended.

4. ACCESSORIES

Ensure that you have your spray tanning accessories within easy reach. Some accessories may include: a small sink, q-tips, latex sponges, hand towels, barrier cream, rubber gloves, masks, moisturizer, wet-wipes, and baby powder.

PRE-SPRAY CHECKLIST

Tip:

Remember to keep your tanning solution chilled (4 – 8 degrees celcius) (not frozen) to ensure that the DHA does not deteriorate. Have your client fill out a client information card and disclaimer form before the spray. Spray in a well lit and well ventilated area. Use about 30 – 50mLs of solution per person (dependent on weight).

Ensure that the client has shaved desired areas before the spray.

Ensure that the client has exfoliated well before the spray and that their skin is free from any moisturizer, perfume or deodorant. If not, offer the client exfoliating towelettes before you spray them.

Ensure that the client has brought loose, dark coloured clothing to wear home. Advise them that some 'Bronzer' may rub off on their clothing. Wearing Wool, Nylon or Silk is not recommended.

Offer the client disposable undergarments if they do not have their own bikini or underwear.

Offer the client a bouffant cap and ponytail elastic to hold up long hair. Push cap behind the ears and above the hairline.

Once the client has followed the preparations on the previous page, you're ready to start. Don't forget your latex gloves.

Test the gun by spraying a small quantity into a waste basket or sink to make certain that the solution is flowing properly.

With the client standing on a bath mat, towel or rug that you designate for the purpose, its time to start. The tanning process is different with the HVLP-TAN system than with an airbrush system because the HVLP-TAN System applies much more material in a short time. We recommend the following procedures: With the client facing you, begin by having the client close their eyes and tilt their head back slightly. Begin spraying the face with a light coat moving down the neck to the chest.

If starting with the face makes you or the client uncomfortable, reverse this first step -chest, neck - then face. Once this area is complete, spray the tummy. At this point, you can either continue down the front of the legs to the feet, or turn the client and finish the back to complete the upper body. When spraying the front of the legs, have the client place one foot out to allow you to spray the inside of the leg. Alternate the outstretched foot to allow application to all areas of the legs. Have the client turn for access to the side, outside and inside of arm and side of the neck. Have the client continue to turn in the same direction to do their back. Continue on down the back of the legs. Where necessary, have the client bend or stretch to eliminate folds of creases under buns, breasts or other areas as necessary to allow an even application. Once you are confident that you have covered all areas of the client; face, chest, tummy, back, arms, and legs, its generally a good idea to apply an additional spray to the face, and have the client turn so you can examine all areas for sparse or excess coverage. If the solution is running, you should blot it with a towel and spray a small amount to even out the application. Once you are confident that you have an even application, you can go over the client again without triggering the gun - the dry air from the gun will accelerate the drying process. They should avoid lowering their arms against their sides or pressing their thighs together until thoroughly dry.

FINAL STEPS

If the client feels any stickiness you may use a fat makeup brush dipped in 'Cornstarch based' Baby Powder to lightly dab the sticky areas. (Do not use talcum powder!)

Tip:

You may use the gun to blow warm air over the client if the client feels cold or sticky

Remind the client of the following:

It will take a few hours for the tan to 'set'. Advise the client not to bathe or shower for at least 8 hours.

Do not sit on or wear light coloured fabric.

Wear loose fitting clothing and avoid wearing jewelry for a few hours.

Do not sweat or carry out any strenuous activity.

Remind the client that the tan will usually not 'take' where skin meets skin.

During the first shower the cosmetic bronzer will wash off. This is normal.

Have the client apply moisturizer and or tan extender daily. Client should only use products which are recommended with this system.

Finish the Job

Once you have finished, it's time to clean up.

Your HVLP-TAN System requires very little cleaning, service or maintenance. After finishing your last client for the day:

Rinse the gun fluid cup with clear water.

Now, examine the front nozzle of the gun to ensure that there is no buildup of product that could obstruct or diminish the fine atomization of product on the next use. If necessary, clean the nozzle with the cleaning solution and a small brush such as a tooth brush or nail brush. Next, remove the fluid cup, and spray until only dry air comes from the gun. Wipe off the outside of the gun, rinse out the fluid cup, and you are now done with the gun for the day.

Next, check the intake air filter on the Turbine Air Pump to make certain that it is free of lint, hair, tanning solution residue or other obstructions that could choke the free flow of air into the Turbine Air Pump. Make sure that the air hose, Turbine Air Pump and cord are out of the walkway, and the client mat is cleaned or washed if necessary. Finally, this is a good time to check stock on your products including Pro Tanning Solution and Pro Tanning Cleaner. When you call, ask about our full line of tan-related products, both for your use in the salon and retail products for the client. See page of this manual for a partial list of products available.

Frequently Asked Questions

Is this product harmful to my skin?

No. The active ingredient in Pro Tanning Systems Tanning Solution is dihydroxyacetone, or DHA. Some premium solutions you use will also contain the tanning ingredient Erythrulose to aid in gaining a natural look and better fading away properties.

DHA has been used in cosmetic preparations for almost 30 years and was listed with the FDA in 1973. In addition to its skin darkening abilities, DHA is also used as an emulsifier, humectant and fungicide. It is declared safe and suitable for use in cosmetics and drugs used to color the skin. DHA is derived from glycerin (vegetable origin), which is a commonly used cosmetic and food ingredient. DHA is not absorbed into the body and poses no possibility of toxicity.

Is this the BEST way to tan without the sun?

Yes. According to the American Academy of Dermatology, the most effective products available are sunless- or self-tanning products that contain dihydroxyacetone (DHA) as the active ingredient. DHA is a colorless sugar that interacts with the dead cells located in the stratum corneum of the epidermis. As the sugar interacts with the dead skin cells, a color change occurs. This change usually lasts about five to seven days or more from the initial application.

Is it safer to sun tan once I have a spray Tan?

No. It's as if you didn't have it. It's important to remember that DHA doesn't contain an added sunscreen and will not protect you from the sun's UVA and UVB rays. If you are planning to be in the sun, remember that your Pro Tanning Tan is on the first layer of the skin, whereas the sun burns the lower layers. Always wear a good sunscreen whenever tanning in the sun to prevent the potential damage to your skin which is not associated with the HVLP Tanning System.

About DHA Tanning:

Skin is made up of two main layers: the epidermis on the outside and the dermis on the inside. Whether you are talking about sun tanning or self-tanning, the epidermis is where the action occurs. The epidermis is also made up of layers. The deepest layer of the epidermis, called the stratum basal (basal layer), is affected during sun tanning. The stratum corneum (horny layer) is the outermost layer of the epidermis — it is this layer that is affected by most sunless-tanning products.

There are several different kinds of sunless-tanning products available today. People have been able to pour on a tan since 1960, when Coppertone came out with the first sunless-tanning product — QT, or Quick Tanning Lotion. If you are old enough to remember this, then you are probably thinking of the incredibly orange hue this lotion produced. Since then, there have been several advancements made on the sunless-tanning front. These days, you can find tanning sunless- or self-tanners and bronzers. You can spray on a light bronze glow or a deep, dark tan.

According to the American Academy of Dermatology, the most effective products available are sunless- or self-tanning lotions that contain dihydroxyacetone (DHA) as the active ingredient. DHA is a colorless sugar that interacts with the dead cells located in the stratum corneum of the epidermis. As the sugar interacts with the dead skin cells, a color change occurs. This change usually lasts about five to seven days from the initial application.

DHA has been used in cosmetic preparations for almost 30 years and was listed with the FDA in 1973. In addition to its skin darkening abilities, DHA is also used as an emulsifier, humectant and fungicide. It is declared safe and suitable for use in cosmetics and drugs used to color the skin. DHA is derived from glycerin (vegetable origin), which is a commonly used cosmetic and food ingredient. DHA is not absorbed into the body and poses no possibility of toxicity.

Every day, millions of dead skin cells are sloughed off or worn away from the surface of your skin. In fact, every 35 to 45 days, you have an entirely new epidermis. This is why tans from sunless- or self-tanning lotions will gradually fade — as the dead cells are worn away, so is your tan. For this reason, most of these products suggest that you reapply the sunless- or self-tanner every week or two to maintain your "tan."

A Quick Recap:

Remember that the Turbine Air Pump air outlet and hose may become hot during use. Avoid kinking or allowing the hose to

become flattened where it is hot near the air outlet.

Keep the Turbine Pump intake filter clean.

Keep power cord and air hose out of walkways.

Tanning solution can, in some cases, discolor light colored hair and fabrics - when in doubt, cover anything that could be effected.

Have the client turn in front of you - don't reach around.

Spray for good full coverage - but not to the point where the product runs or streaks - A light or medium application is better than a heavy one. New clients should repeat the application within 48 hours or so for the optimum tan.

Don't spray unprotected palms of hands, soles of feet, light colored hair or clothing or open eyes.

Have the client bend or stretch as necessary to achieve complete coverage in wrinkles and folds.

Only wipe or blot the wet solution on the client if there is a run from perspiration or excess application - spray some additional product on the wiped area.

Turn on a fan in the spraying room and/or use the untriggered flow of air from the gun to dry the client before leaving the salon.

Remember, you can rotate the Air Cap on the standard HVLP-TAN Gun to change from vertical fan pattern to horizontal fan pattern for spraying legs, arms and sides.

LIMITED WARRANTY

What is covered and for how long

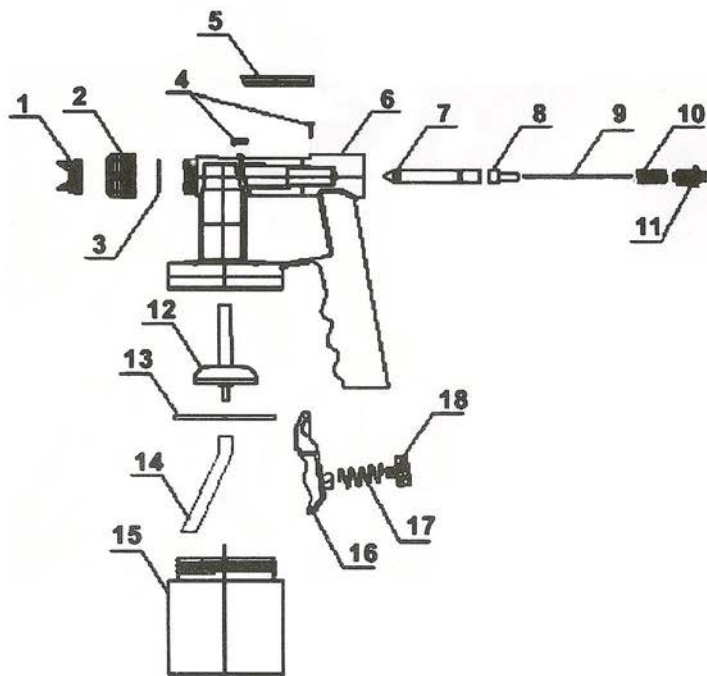
We are confident that your HVLP Tanning System components will perform well and therefore warrant to you, as the original purchaser, for a period specified by the seller of this unit.

What we will do and how to get service

If your system is covered during the warranty period, we will repair or replace (at our option) the necessary component(s) of your system without cost to you (postage cost may apply), which will be your exclusive remedy under this warranty. Simply send the system postage prepaid and insured, with proof of purchase and a short description of the problem directly to your supplier.

What is not covered

Our warranty for your product will not cover normal wear of parts, damage resulting from negligent use or misuse of the product, use of improper voltage or current, use contrary to operating instructions or disassembly, repair or alteration by any person other than our service personnel. It also does not cover consumables. Any implied warranty of merchantability or fitness for a particular purpose on your system is limited to the duration of this written warranty. We shall not be liable for any incidental or consequential damages for breach of any express or implied warranty on your system.



- 1 AIRCAP
- 2 AIRCAP RETAINER
- 3 SEAL
- 4 NEEDLE HOUSING COVER SCREW
- 5 NEEDLE HOUSING COVER SCREW
- 6 GUN BODY
- 7 NEEDLE HOUSING
- 8 NEEDLE RETRACTOR FITTING
- 9 NEEDLE
- 10 SPRING
- 11 SPRING RETAINER
- 12 DIP PIPE LOCATER PLATE
- 13 GASKET
- 14 DIP PIPE
- 15 POT
- 16 TRIGGER
- 17 TRIGGER SPRING
- 18 FLUID CONTROL KNOB