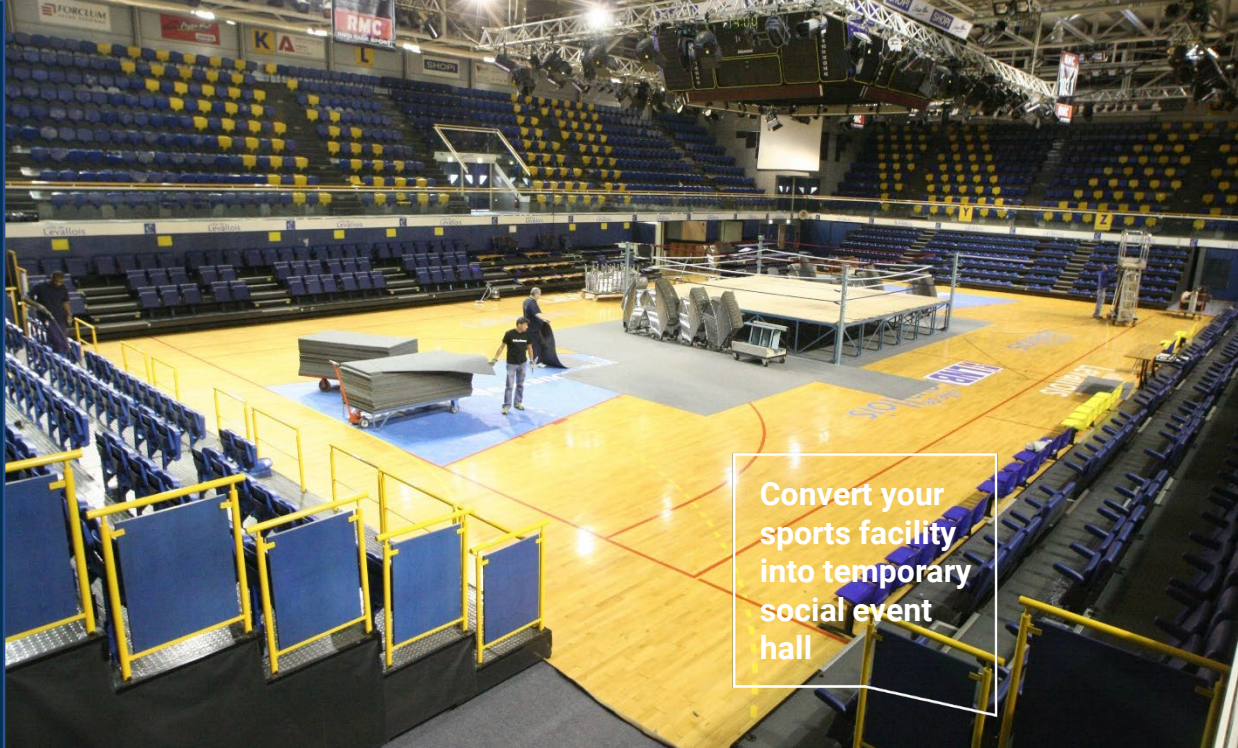


PROTECTILES

Protection solutions

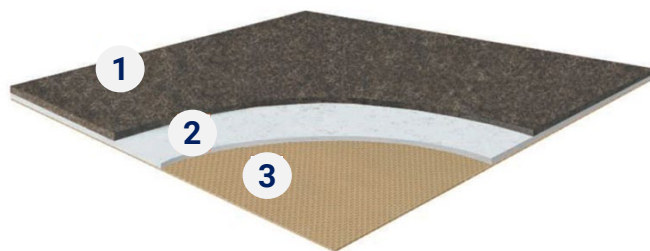


PRODUCT PROFILE

- 1 Polypropylene
- 2 Latex
- 3 Polyolefin backing

KEY FEATURES

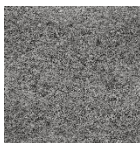
- Extremely resistant to heavy weights and furniture.
- Acoustic comfort
- Easy to install (less than 1.5 hour to install 1000sqm)
- Easy maintenance



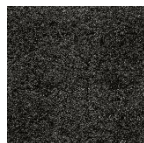
Tile:
1 x 2m

Thickness:
5.2mm

5 COLORS AVAILABLE



Light grey
44003001



Anthracite
44003000



Dark brown
44003002



Night blue
44003003



Red
44003004



Protectiles is an **extremely durable floor protection system** that helps to easily secure and **convert your athletic facility** into a temporary exhibition hall to **host non sportive events**.

From a facility management perspective, **Protectiles** systems will **greatly reduce your need for changing or resurfacing and re-sanding**. This effectively **saves money**, while **increasing the lifespan of your facility**.

In addition, **Protectiles** systems allow you to **easily transform** and **rent out your sports facility for social or business functions**. This tremendous benefit will provide an additional source of revenue without ever having to jeopardize the integrity of your floor.

Protectiles are **100% phthalate free**, have **low COV emissions rate <100µg/m³** and come with a **5-year warranty**.



ACCESSORIES

A trolley is available for **Protectiles** handling:

- 4 articulated wheels with rubber strips and 2 brakes
- Capacity: 100 tiles



Protectiles trolley
1568001