



# ELECTRONIC ASSEMBLY

WORKSTATION | OPERATOR | SMT LINE | PCB

# ASSEMBLY OPERATOR

Operators are needed to run the high-speed SMT lines, do secondary board assembly, inspection and rework, as well as perform final unit build. Depending on their function, the operator needs the proper tools to perform their jobs and to protect themselves and the sensitive circuitry they work on.

Providing verifiable continuous grounding of stationary and mobile operators is paramount to the success of the static control program in the factory. Safety supplies are needed to protect the operator from injury and other possible health hazards.



## MATERIALS



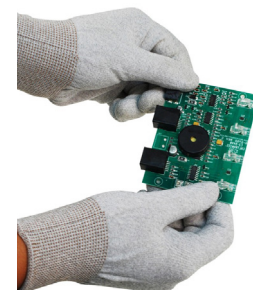
### Smocks

Many colors, fabrics, and styles. Jacket/coat, Knitted Cuffs, Convertible Sleeves, Single Wire/Dual Wire, Collar/No Collar



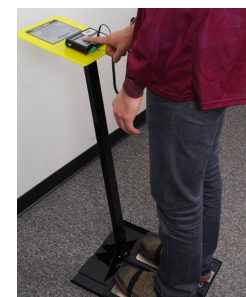
### Personal Safety

Eye Protection, Footwear, Gloves, Hearing Protection, Masks/Respirators, Protective Clothing



### Gloves

Coated Gloves, Disposable Gloves, ESD Inspection Gloves, Finger Guards, Heat Resistant Gloves, Work Gloves



### Grounding & Monitoring

Wrist Straps & Coil Cords - Single / Dual Wire, Foot / Sole Grounds, Disposable Wrist / Foot Grounds, Testers, Ground Monitors, Compliance Verification

# PCB & FINAL ASSEMBLY

A staggering variety of products are manufactured today that have electronic circuitry. The majority of the circuit boards used are assembled using high speed equipment to place, solder, and inspect the many package types used in the designs. These PCBs, along with other parts, are then assembled to create the finished product.

EIS provides solder, chemicals, adhesives, tools and other materials from leading suppliers that are integral to both the automated and manual assembly processes. In addition, EIS stocks many supplies used in the maintenance and operation of the production lines to keep them operating at peak efficiency.



## MATERIALS



### Solder - Bar / Paste / Wire

### Soldering Flux

### Surface Mount Adhesive



### Understencil Rolls

### Stencil Cleaner

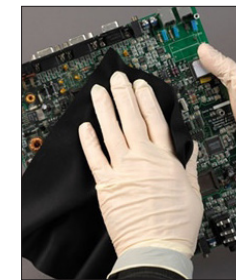
### SMT Carts



### In-Plant Handlers

### Powered Screwdrivers

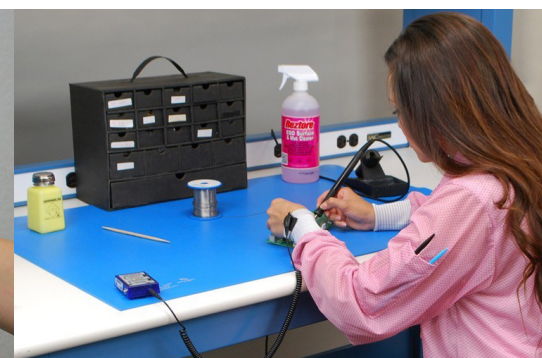
### Dispensing Equipment



### Assembly Hand Tools

### Magnifiers

### Inspection Wipes



SHOP NOW AT [EIS-INC.COM](http://EIS-INC.COM)

SHOP NOW AT [EIS-INC.COM](http://EIS-INC.COM)

# WORKSTATION

## MATERIALS

- 1 Fume Extraction Equipment
- 2 ESD Cart
- 3 Vision Inspection Equipment
- 4 Monitor & Keyboard Holder
- 5 Task Lighting
- 6 Conductive Trays
- 7 Ionization
- 8 Conductive Bins
- 9 Magnifying Lamps
- 10 ESD Smocks
- 11 ESD Task Chairs
- 12 Automatic Height Adjustable Bench
- 13 ESD Anti-Fatigue Mat
- 14 Specialty Tools
- 15 Freeze Spray & Cleaners
- 16 Hand Tools
- 17 Perforated Back Panel
- 18 ESD Clipboard
- 19 ESD Sheet Protectors
- 20 ESD Bags
- 21 Tilttable Shelf
- 22 Task Wipes
- 23 Presaturated Wipes
- 24 ESD Safe IPA Bottle
- 25 Bin Shelf
- 26 Gloves
- 27 Safety Glasses
- 28 ESD Tape & Dispensers
- 29 Precision Hand Tools
- 30 Conductive Organizer
- 31 ESD Mat Cleaner
- 32 ESD Safe Lotion
- 33 Desoldering Braid
- 34 Solder Wire
- 35 Soldering Tips & Accessories
- 36 Flux Pens
- 37 Tweezers
- 38 Soldering Equipment
- 39 Conductive Brushes
- 40 Wrist Strap
- 41 ESD Monitor
- 42 ESD Floors & Cleaners
- 43 CPU Holder
- 44 Electric Driver

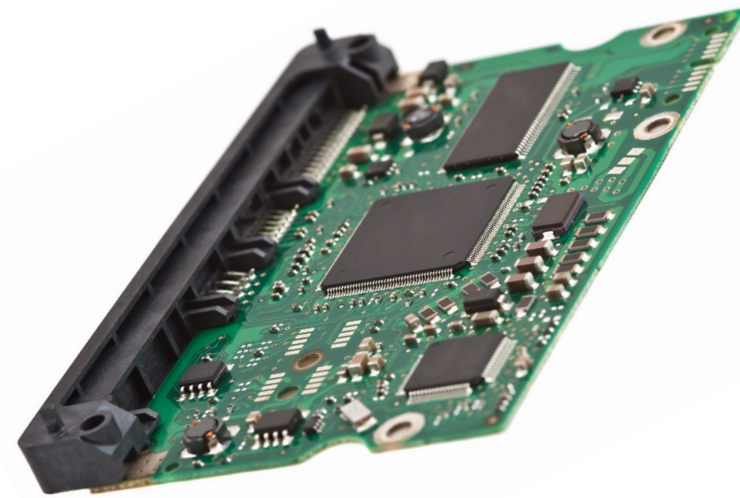


SCAN HERE  
to view our  
interactive  
workstation!

# CIRCUIT BOARD MATERIALS

As circuit boards and device packages continue their miniaturization and add even more complex hybrid designs, new materials are needed to ensure product reliability. Product quality can be affected by many factors including correct component placement, solder joint reliability, vibration reduction, as well as protection from static fields, heat, moisture and EMI/RFI interference.

EIS supplies a variety of materials from top suppliers that solve these diverse design requirements. A few of the categories of materials used at the board level are listed below.



## MATERIALS

Solder (Paste, Bar, Wire)

Flux (Liquid and Paste)

Surface Mount Adhesives

CSP Underfills

Conformal Coating

Sealants

Potting Compound

Encapsulants

Non-Conductive Pastes

Electrically Conductive Pastes

Printed Inks

Assembly Film Adhesives

Thermal Management Materials

Low Pressure Molding

# LABELS

Heat is ever present in electronic assembly applications. For processes that include wave soldering, board labels will have to endure extreme heat. EIS produces custom printed labels for a variety of applications.

Polyimide labels can withstand high heat for long periods of time without falling off or image degradation. There are also several polyester label materials that perform well in high heat situations. What material you ultimately choose depends on how high the temperature and how long the label will be at that temperature. EIS's material experts can assist with choosing the correct material for your application.



## MATERIALS

Polyimide

Polyester

Polypropylene

Biaxially Oriented Polypropylene

Halogen-Free High Resin Content  
Thermal Transfer Ribbon

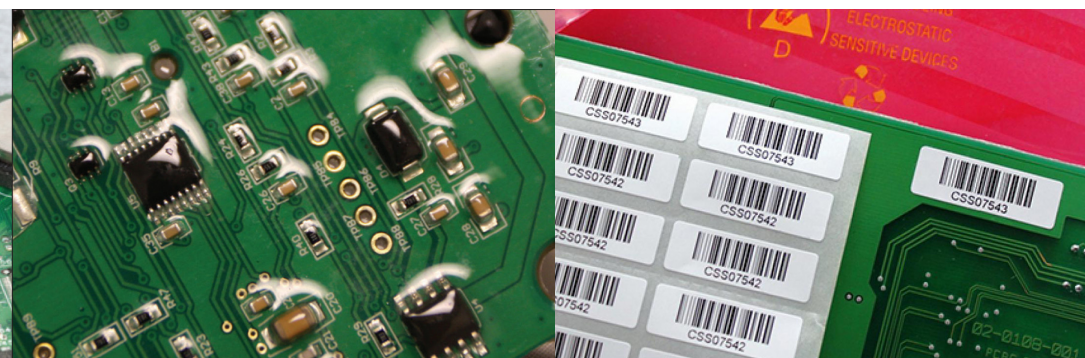
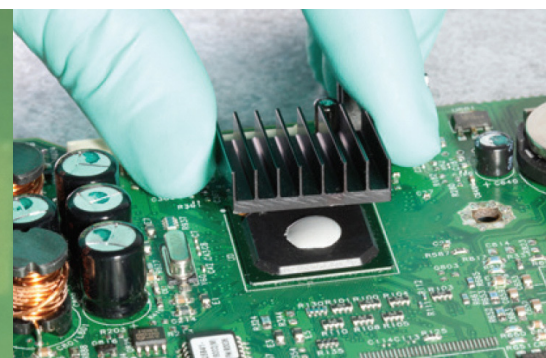
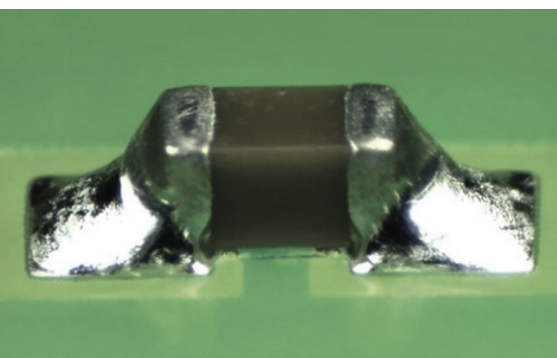
Permanent

Removable

Solvent Resistant

High Temperature

Identification



SHOP NOW AT [EIS-INC.COM](http://EIS-INC.COM)

MORE INFO AT [EIS-INC.COM](http://EIS-INC.COM)



**EIS**™

[eis-inc.com](http://eis-inc.com)



Scan here to  
learn more.